

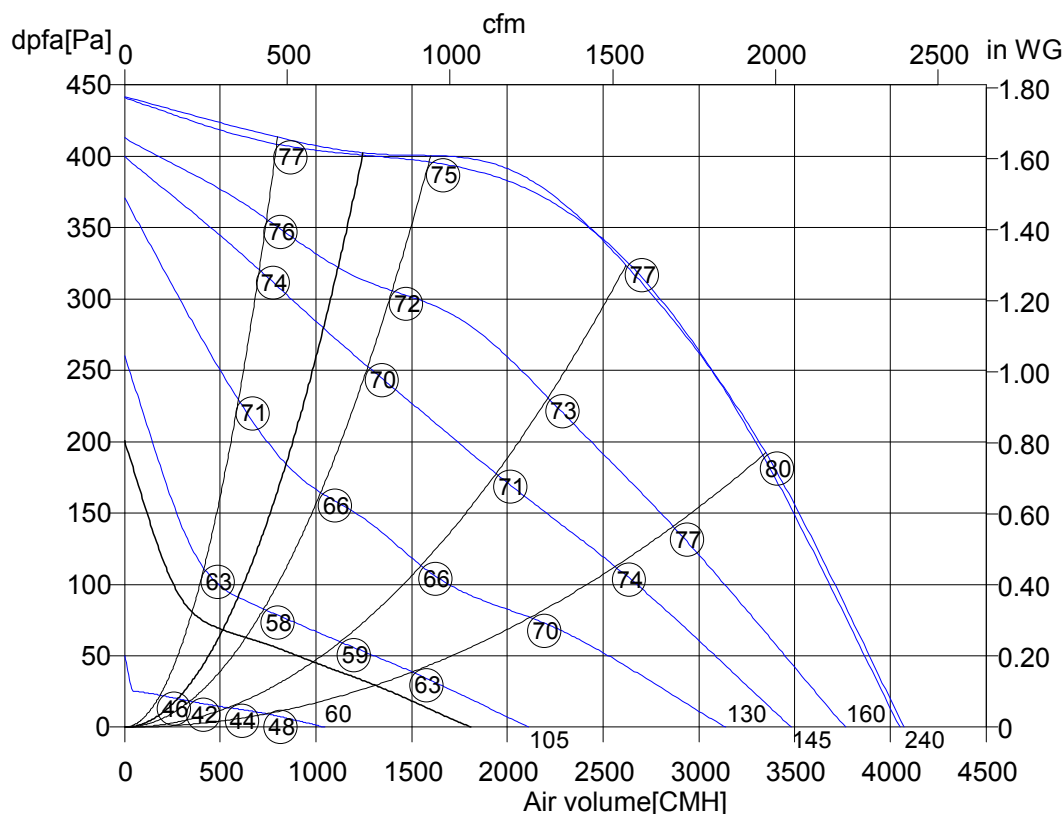
Tuesday, 30.April 2013



Free running impeller With backward curved plastic impeller

ErP

Product is from 2013
available outside the EU



EKH_400-4_H140.5FA

Art. No.	
U[V]	230
f[Hz]	50
P[kW]	0.54
I[A]	2.55
n[1/min]	1375
C[μF]	12
tR[°C]	45
dpst[Pa]	-
Delta I[%]	20
Ia/In	2.5
IP	54
Weight[kG]	9.5
Wir. diag.	01.024

○ Sound power level LwA8[dBA]

Data related to operating point

SFP=1.20 kW/m³

Actual Requested
Operating point

U[V]	240	230	160	145	130	105	60	92.0	
dV/dt[m³/h]	1247	1244	1116	1039	844	593	278	512	512
dPt[Pa]	405	403	324	281	186	91.6	20.1	68.2	
dPfa[Pa]	403	401	322	280	184	91.1	20.0	67.8	67.8
I[A]	2.36	2.28	2.32	2.38	2.52	2.29	1.40	2.04	
P[kW]	0.521	0.499	0.379	0.347	0.304	0.211	0.068	0.171	
n[U/min]	1408	1402	1269	1188	972	674	314	566	

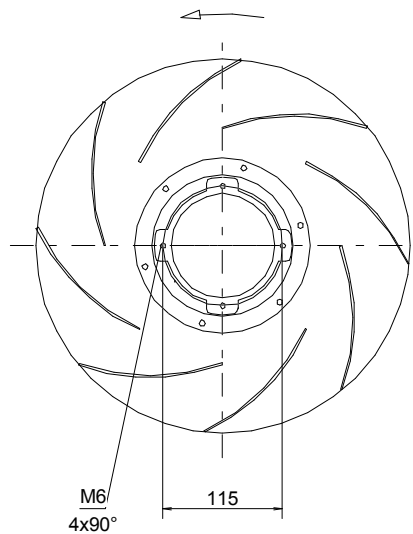
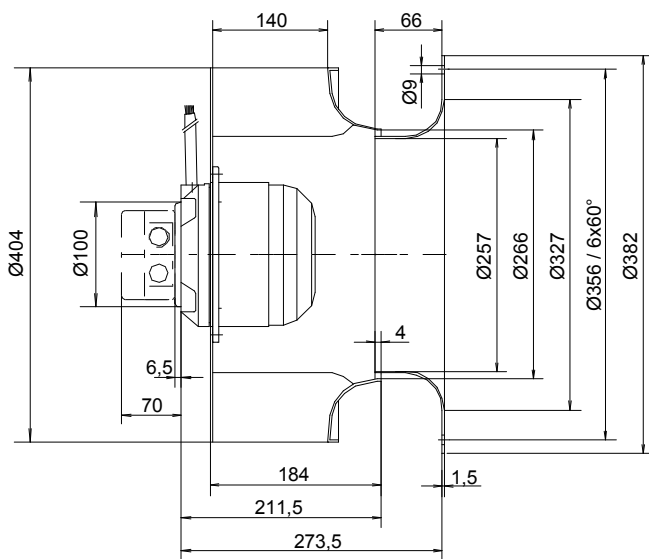
Verfügbare ERP-Ready-Alternative: EKH_B400-4_112.5HA; auf Anfrage / on request

Tuesday, 30.April 2013



Free running impeller
With backward curved plastic impeller

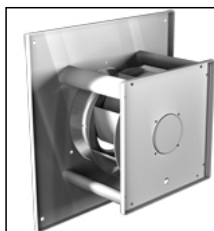
EKH_400-4_H140.5FA



Tuesday, 30.April 2013

Pos.	Pieces	Description	Price
		<p>Rosenberg radial fans with free-running impeller -KH- series</p> <p>The single inlet, backward curved high efficiency impeller from sea-waterproof aluminium, mounted onto the speed controllable external rotor motor, equipped with an air flow optimized inlet cone from galvanized sheet steel. The impeller can be supplied as single unit or as a complete module of galvanized sheet steel.</p> <p>The fan is balanced on two levels according to quality class G 2.5, DIN/ISO 1940.</p> <p>Closed motor, protection class IP 44/54 with protection against humidity and thermal contacts wired in windings for motor protection. Maintenance free ball bearings, closed on both sides, sealed for life. Electrical connection through terminal box (not connected) in IP 44.</p> <p>Documentation : Declaration of incorporation and operating instruction are according to Machinery Directive 2006/42/EC, CE identification in accordance to EMC-directive 2004/108/EC and Low Voltage Directive 2006/95/EC. Motor operating instruction is available from motor manufacturer.</p> 	

Tuesday, 30. April 2013



Free running impeller With backward curved plastic impeller

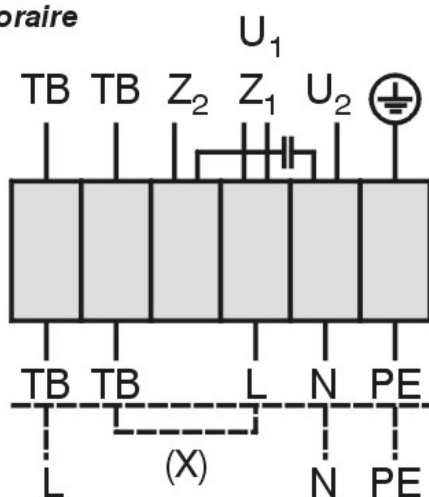
EKH_400-4_H140.5FA

Einphasenwechselstrommotor mit Betriebskondensator und Thermostatschalter.
Bei Verwendung von RE Steuergeräten TB mit der Wicklung in Reihe schalten.
Hierfür Brücke (x) einlegen und gestrichelt gezeichnete Anschlüsse belegen.

Single phase A.C. motor with operating capacitor and thermostatic switch.
Thermostatic switch wired in series with windings if RE controllers are used.
Insert bridge (x) and wire connections shown as dash-line on the drawing.

Moteur monophasé avec condensateur permanent et interrupteur thermostatique branché en série avec le bobinage en cas de branchement avec des régulateurs RE. Mettre un pont (x) et brancher toutes les connexions dessinées en hachuré.

Rechtslauf
clockwise
rotation horaire



U₁ braun / brown / brun
U₂ blau / blue / bleu
Z₁ schwarz / black / noir
Z₂ orange / orange / orange

TB weiß / white / blanc
PE gelb-grün
yellow-green
jaune-vert

01.024

TK3-20010