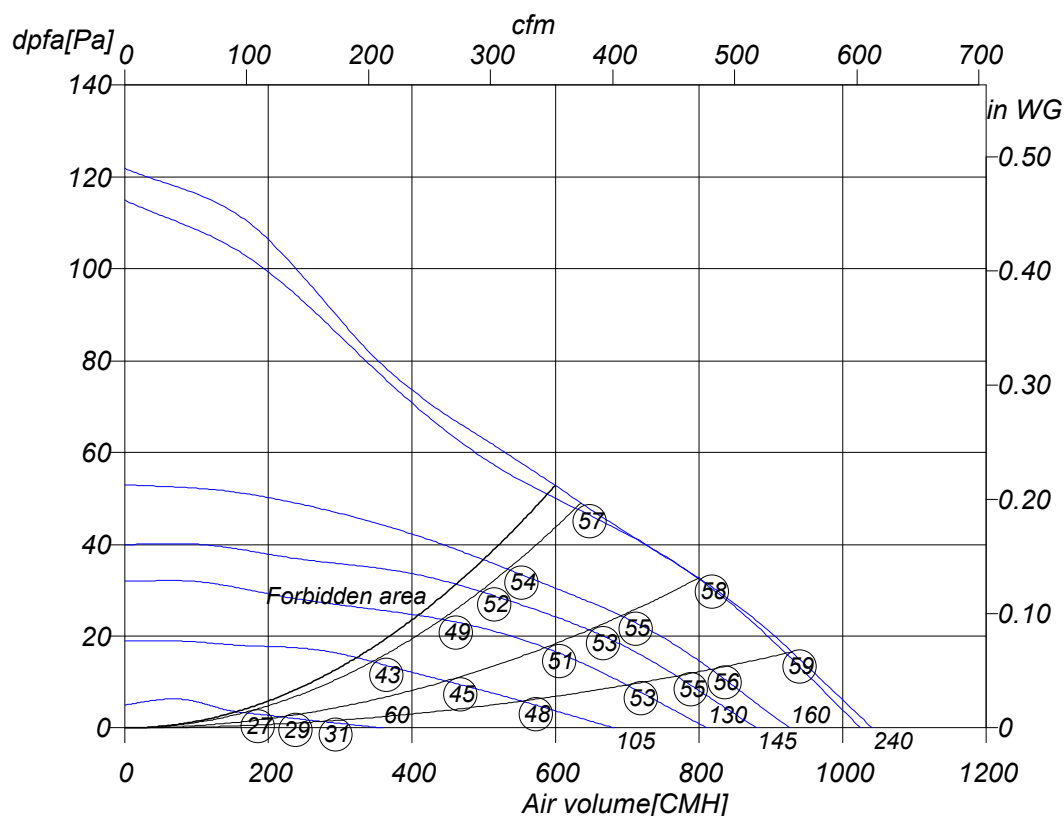


Monday, 30.June 2008



## Axial fan



EQ 250-4	
Art. No.	E00-25000
U[V]	230
f[Hz]	50
P[kW]	0.06
I[A]	0.27
n[1/min]	1270
C[μF]	1.5
tR[°C]	70
dpst[Pa]	-
Delta I[%]	-
Ia/In	1.6
IP	44
Weight[kG]	4.5
Wir. diagr.	01.009

○ Sound power level  
LwA6[dBA]

### Octave sound power level

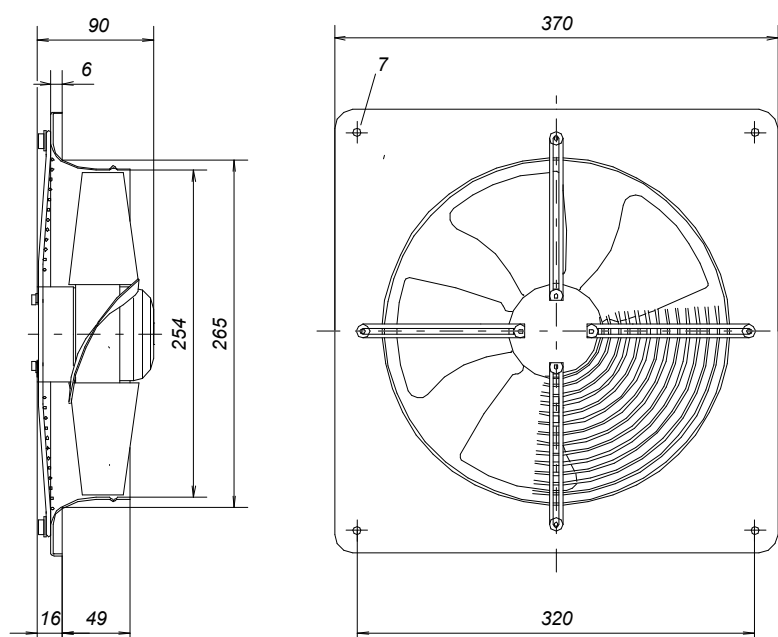
f[Hz]	125	250	500	1000	2000	4000	8000
LwA6[dBA]:	-15	-9	-6	-5	-4	-9	-20

Monday, 30.June 2008



**Axial fan**

## EQ 250-4





Monday, 30.June 2008



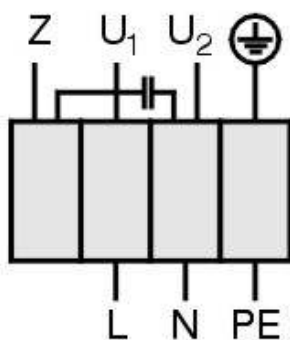
**Axial fan**

## EQ 250-4

Einphasenwechselstrommotor mit Betriebskondensator und Thermokontakt.  
Thermokontakt mit der Wicklung in Reihe geschaltet.

**Single phase A.C. motor with operating capacitor and thermal contact.**  
**Thermal contact wired in series with windings.**

***Moteur monophasé avec condensateur permanent et thermovontact branché  
en série avec le bobinage en cas de branchement***



U<sub>1</sub> blau / blue / bleu  
U<sub>2</sub> schwarz / black / noir  
Z braun / brown / brun  
PE gelb-grün  
yellow-green  
jaun-vert

TK3-20005

01.009