

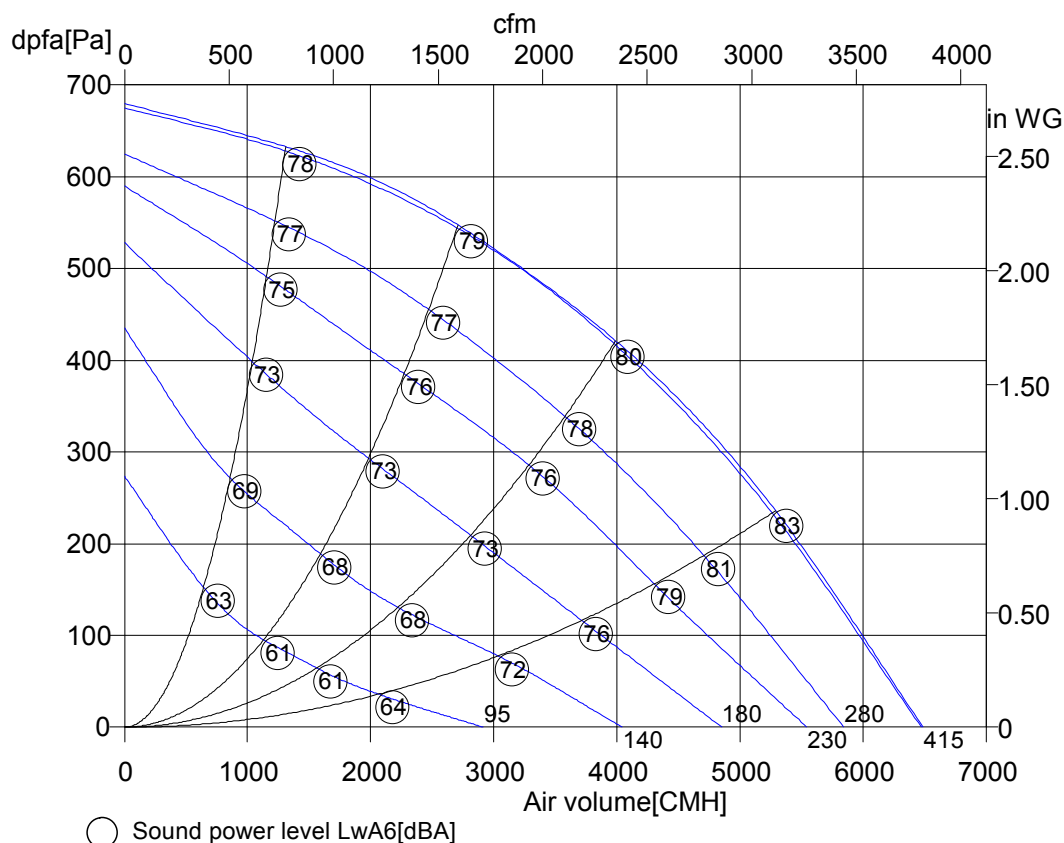
Friday, 02.May 2014



Unobox-ME with motor outside the air stream

ErP

Product is
not affected by the Directive



UNO-ME67-450-4D

Art. No.	
U[V]	400 D
f[Hz]	50
P[kW]	0.94
I[A]	1.75
n[1/min]	1380
C[μF]	-
tR[°C]	100
dpst[Pa]	-
Delta I[%]	35
Ia/In	5.0
IP	54
Weight[kG]	62
Wir. diagr.	01.006

Octave sound power level

f[Hz]	125	250	500	1000	2000	4000	8000
LwA6[dBA]:	-13	-12	-10	-4	-5	-8	-21
LwA5[dBA]:	-18	-16	-13	-8	-7	-13	-24
LwA2[dBA]:	-19	-22	-24	-23	-25	-28	-36

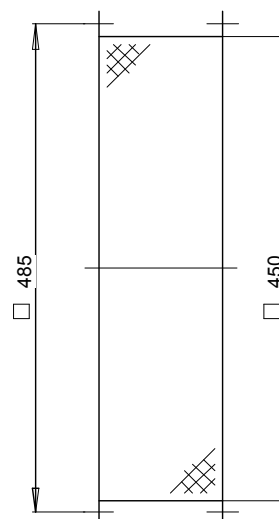
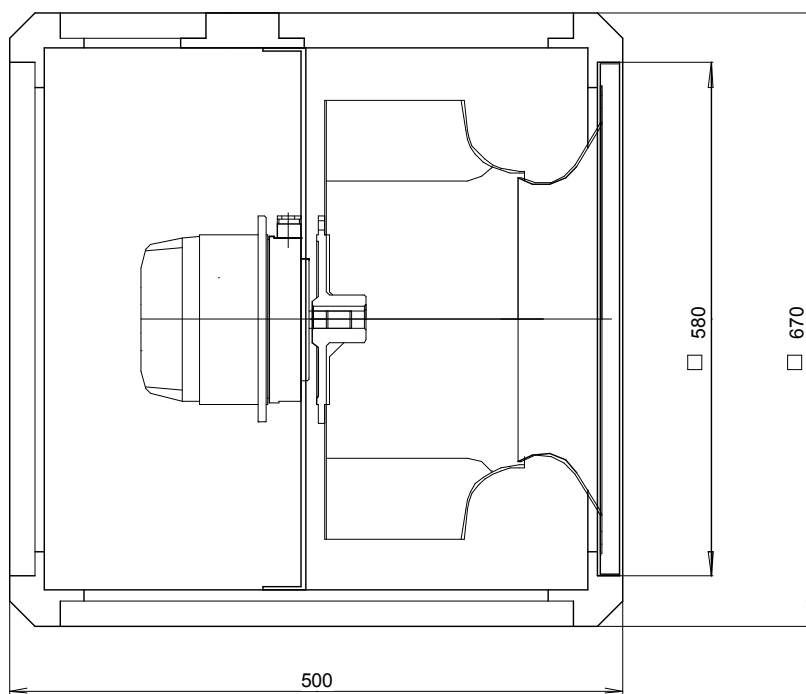
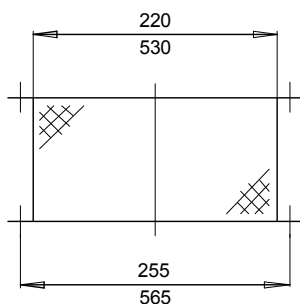
Hint: Max. temp. 90°C with electr. control, max. ambient temp. 40°C
Outlet open on 2 sides

Friday, 02.May 2014



Unobox-ME with motor outside the air stream

UNO-ME67-450-4D



Friday, 02.May 2014

Pos.	Pieces	Description	Price
		<p>Nominal data</p> <p>Type UNO-ME67-450-4D</p> <p>Article no.</p> <p>Voltage[V] 400 D</p> <p>Frequency[Hz] 50</p> <p>Power P1[kW] 0.94</p> <p>Current I[A] 1.75</p> <p>Speed n[1/min] 1380</p> <p>Capacitor C[μF] -</p> <p>Max. air temp.tR[°C] 100</p> <p>Min. pressure dpst[Pa] -</p> <p>Delta I[%] 35</p> <p>Startup current Ia/In 5.0</p> <p>Protection-mode IP 54</p> <p>Weight[kg] 62</p> <p>wiring diagram 01.006</p>	

Friday, 02.May 2014



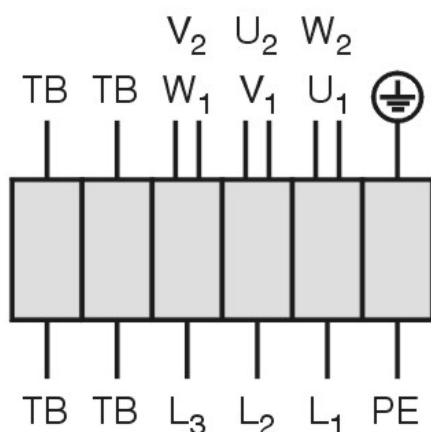
Unobox-ME with motor outside the air stream

UNO-ME67-450-4D

Drehstrommotor in Δ -Schaltung mit Thermostatschalter (TB).
Drehrichtungsänderung durch Vertauschen von 2 Phasen.

Three phase motor in delta connection with thermostatic switch (TB). Changing of rotation direction by interchanging of 2 phases.

Moteur triphasé branché en triangle avec interrupteur thermostatique (TB). Changement de sens de rotation par inversion de deux phases.



U ₁	braun / brown / brun
V ₁	blau / blue / bleu
W ₁	schwarz / black / noir
U ₂	rot / red / rouge
V ₂	grau / grey / gris
W ₂	orange / orange / orange
TB	weiß / white / blanc
PE	gelb-grün yellow-green jaune-vert

01.006

TK3-20004