



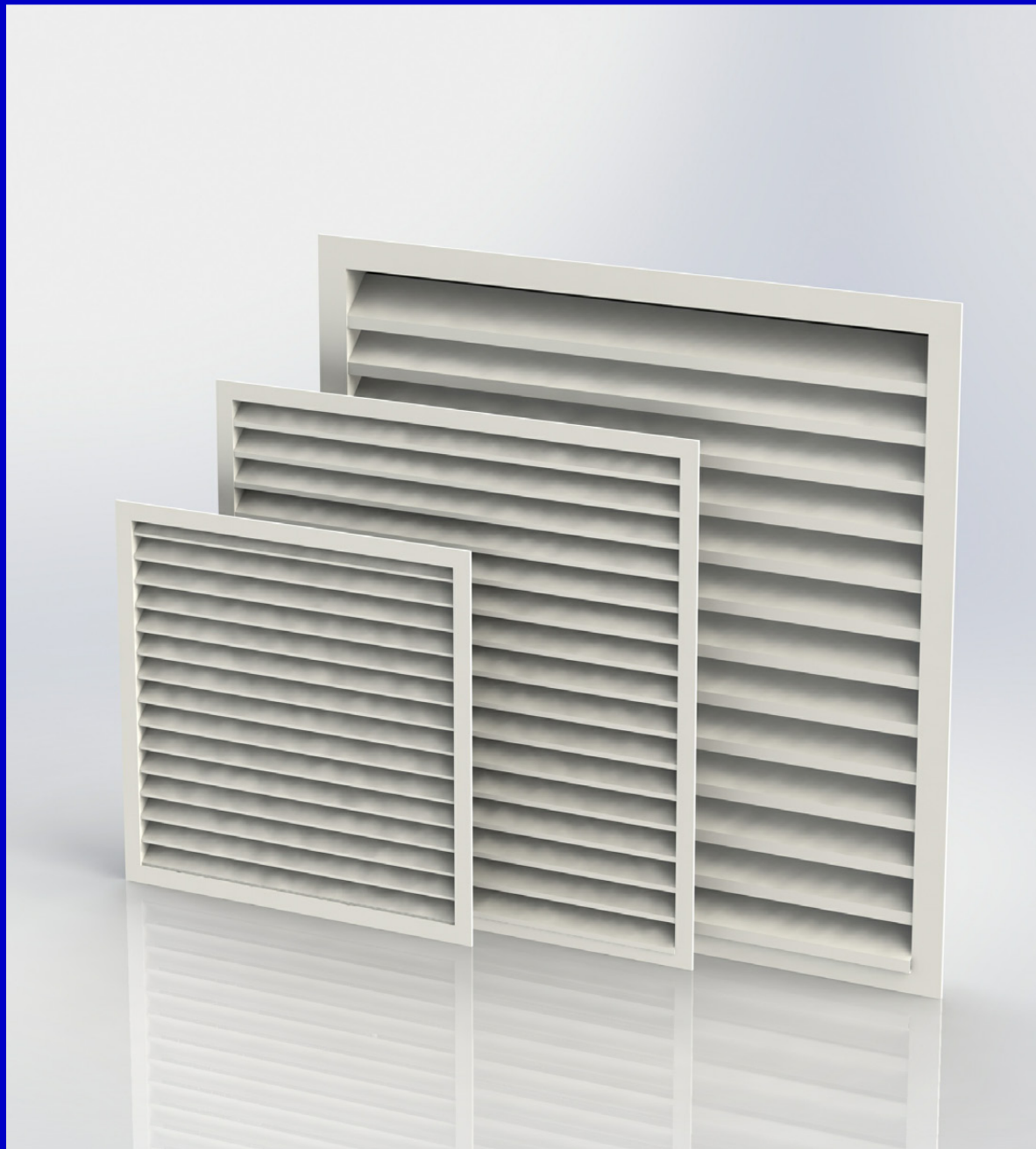
Incorporating



Louvre systems

Series WL Standard weather louvres

- Standard range of single bank louvres as used in countless installations worldwide.
- Good resistance to water ingress, with low resistance to airflow.
- Approximately 50% free area on all models.
- Polyester powder coating to the full range of RAL and BS colours.
- WL38's in popular square sizes held in stock for immediate despatch.



Series WL

Series WL standard weather louvres are the standard weather louver used in countless installations throughout the world.

Available in four formats to suit any size installation, all WL types have a single bank of blades with a 45° face for good levels of rain resistance in a louver but the most demanding conditions. Minimal resistance to airflow is assured with an approximate free area of 50% on all series.

Advised break points for switching between series:

WL38: Up to 1m²

WL50: Between 1m² and 1.5m²

WL75: Anything above 1.5m²

WL100: By request only



Design features

Material	Extruded aluminium BZP steel screws or aluminium pop rivets
Blade	Various pitches (40, 50, 75 and 90mm) all with 45° face slope
Core	Fixed
Frame	Standard: Flanged Optional: Recessed, reversed and concealed
Fixings	Standard: None Optional: See page 7
Finish	Standard: Mill aluminium Optional: See page 12
Mass/m² face area	WL38: 12 kg WL50: 12 kg WL75: 15 kg WL100: 16 kg
Free area	Approx 50% (varies with size)

Important note:

Free area is not a reliable guide to performance.

It is possible to have two louvres with identical geometric free areas but different airflow characteristics.

Wherever possible use a tested airflow coefficient, as stated on the following page or available in the test certificates for WL50 and WL75 louvres which are available on request.

Quality assurance

HVC Supplies (Stourbridge) Ltd is an ISO 9001:2008 accredited company.



Assessed to ISO 9001:2008
Cert/Ref No. 1186

BSRIA Testing

Series WL50 and WL75 standard weather louvres have been tested against:

BS EN 13030:2001

The testing was carried out in April 2013 by BSRIA in Bracknell, Berkshire, England.

Copies of the test reports are available on request.



Performance

Both WL50 and WL75 louvres were tested with an optional rear mounted drip tray, this will have had negligible impact on airflow but a large impact on rain resistance.

Headline figures for each series are shown here, full copies of the full test reports are available on request.

WL50 - DT: (WL50 complete with rear mounted drip tray)

Mean airflow coefficient: 0.314 (Class 2)

Rain rejection: Class C up to 2 m/s draw velocity
Class D above 2 m/s draw velocity

WL75 - DT: (WL75 complete with rear mounted drip tray)

Mean airflow coefficient: 0.252 (Class 3)

Rain rejection: Class C up to 1.5 m/s draw velocity
Class D above 1.5 m/s draw velocity

Stocked louvre sizes

The following sizes of mill finish WL38 louvres complete with bird screen are held in stock for immediate despatch.

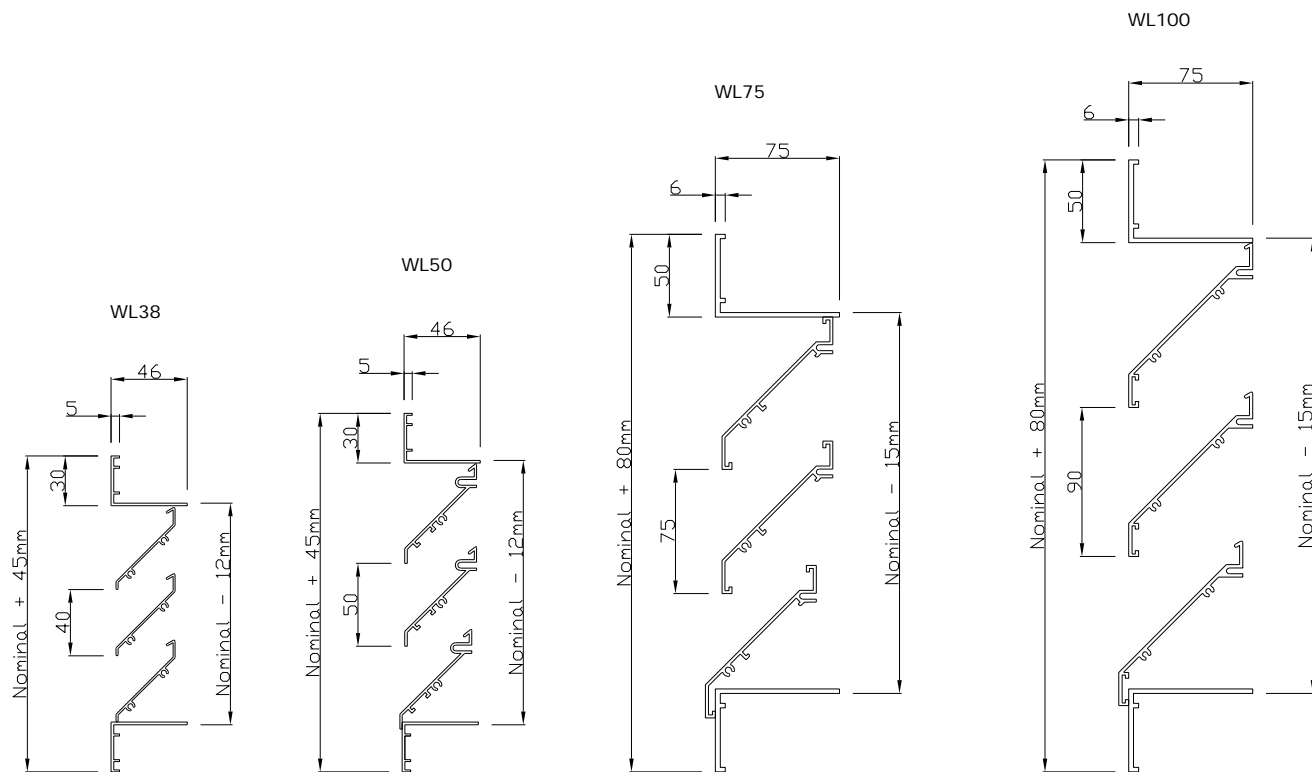
150mm ²	500mm ²
200mm ²	550mm ²
250mm ²	600mm ²
300mm ²	700mm ²
350mm ²	800mm ²
400mm ²	900mm ²
450mm ²	1000mm ²

All sizes are nominal.

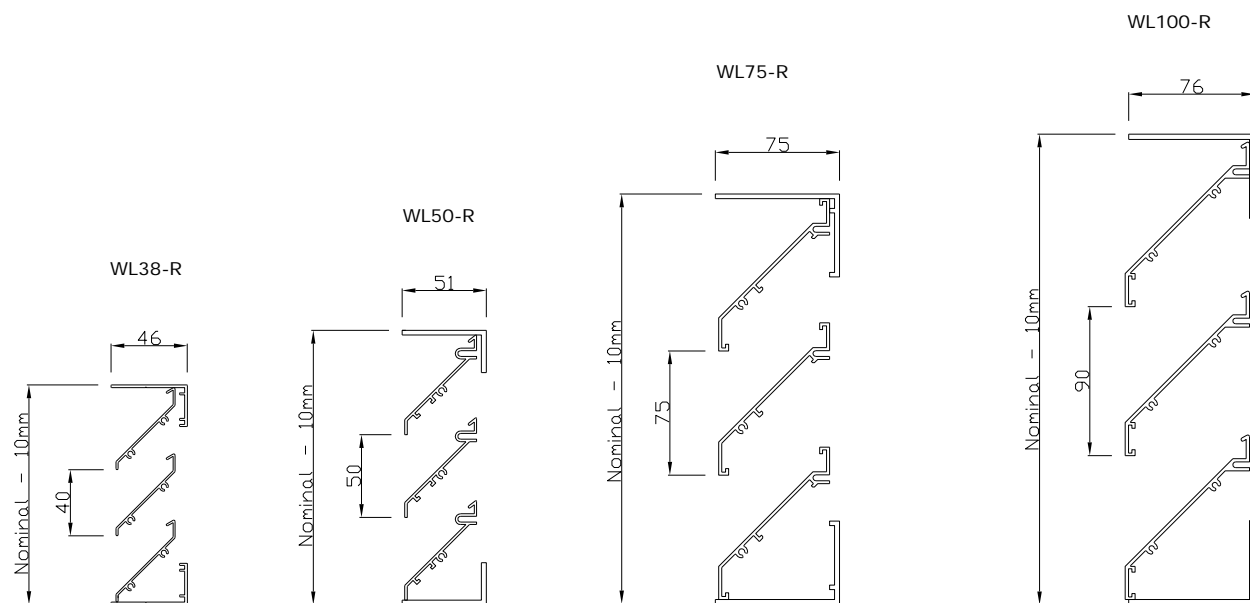
Product code: WL38 - BS - Mill.

Technical drawings

Standard - Flanged

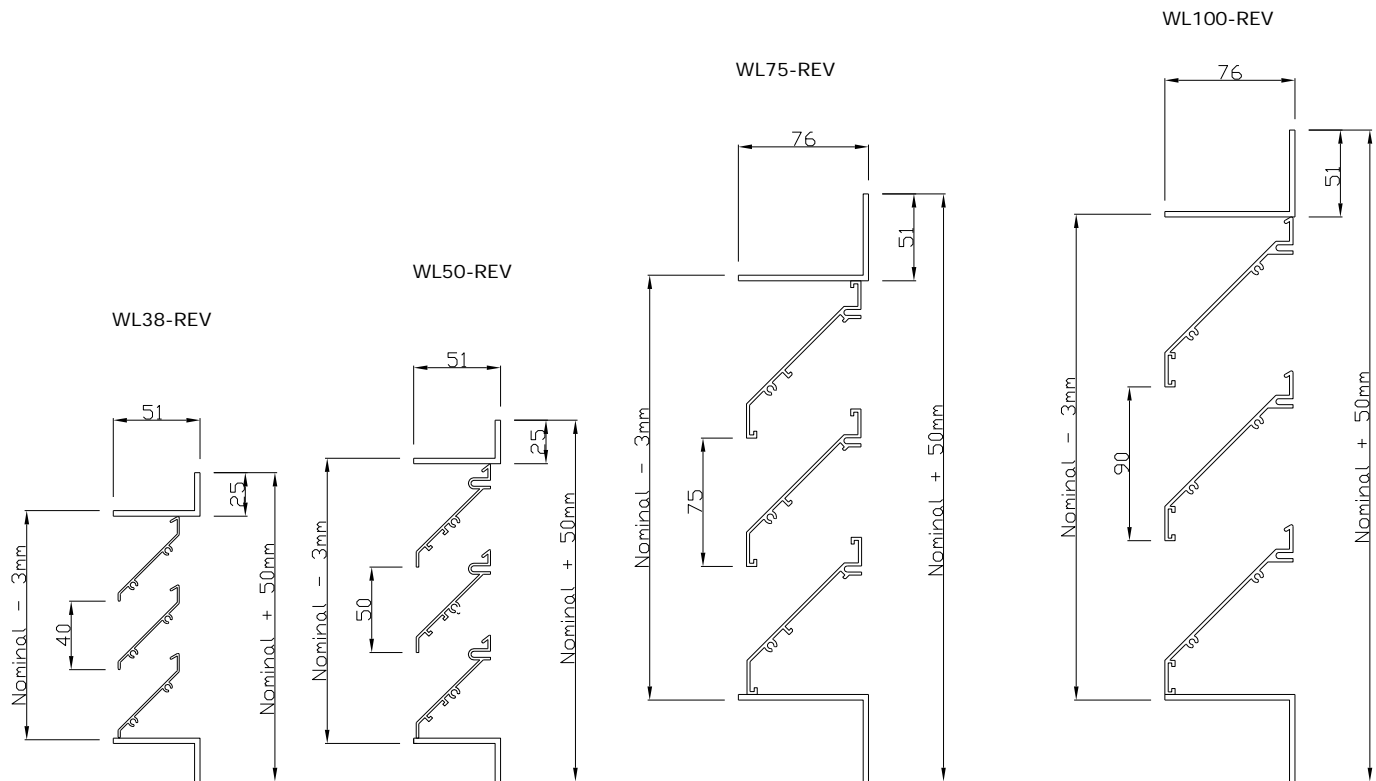


Recessed frame



Technical drawings

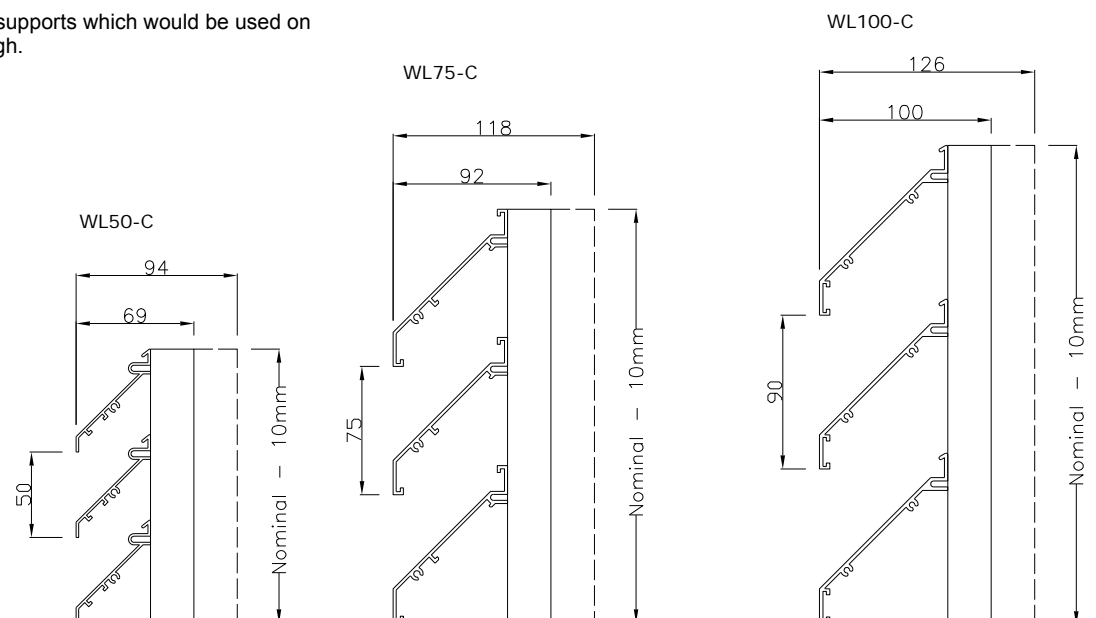
Reversed frame



Concealed frame

Blades are only supported by rear mullions.

Hatched areas denote the larger supports which would be used on units equal to or over 1500mm high.



Technical notes

Stop gaps

Louvre blades are laid out starting with the bottom blade and then working upwards.

Should a whole number of blades not be possible to fit into the required height, the top-most blade will either be cut down, or a stop gap will be fitted.

The maximum heights of stop gaps, based on louvre series are:

WL38: 25mm
WL50: 45mm
WL75: 60mm
WL100: 75mm

Stop gaps are visible only as flat aluminium sections, and are fitted prior to powder coating (if required).

Frame types

The below table shows the standard and optional frames available for each louvre series, along with ordering codes and dimensions.

These are only standard frame types. If you have a special requirement not shown here, please contact us.

WL Series	Frame code	Description	Standard or optional	Nominal to overall size	Overall depth
WL38 and WL50	30FW	30mm flat	Standard	+ 45mm	46mm
	50FS	50mm flat (shallow)	Optional	+ 80mm	50mm
	75FS	76mm flat (shallow)	Optional	+ 130mm	51mm
	100FS	102mm flat (shallow)	Optional	+ 180mm	51mm
WL75 and WL100	50FD	50mm flat (deep)	Standard	+ 80mm	75mm
	75FD	76mm flat (deep)	Optional	+ 130mm	76mm
	100FD	102mm flat (deep)	Optional	+ 180mm	102mm

Large units

Large louvres may need to be produced in sections. The number of sections can be stated in your ordering code, or will be decided by HVC and stated on your order acknowledgement.

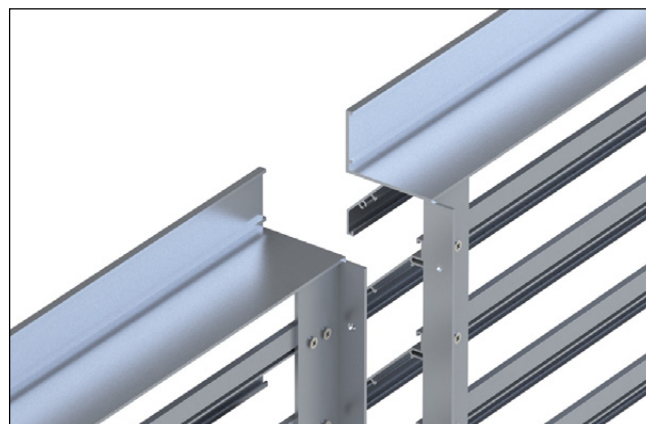
Side-by-side sections

- **WL38's**
Non continuous appearance. Blades will be edged with a flat aluminium profile to be butted up to its adjacent profile.
- **WL50's, WL75's and WL100's:**
Continuous appearance with concealed bolting points for joining adjacent sections. This will increase louvre depth by approximately 25mm.

Vertically stacked sections

- **All series**
Units will be manufactured in sections of equal height, to be stacked together upon installation.

Joining strips can be supplied if required to ensure alignment.



WL75 in side-by-side sections showing concealed angle with bolting points.

Fixings

None (Standard)

Most weather louvres are supplied with no fixings.

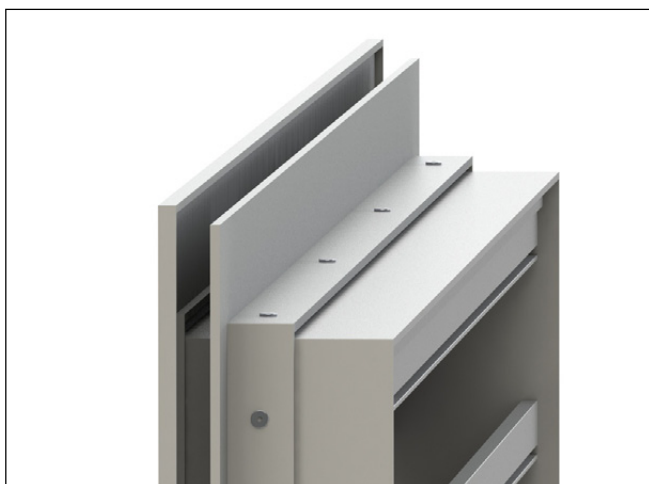
In this instance we recommend drilling through either the louvre flange, or the neck, and screwing directly into the supporting structure with an appropriate fixing.



Glazing bar - GZ (Required depth needed)

An additional frame can be fixed to the louvre neck to create a glazing bar frame suitable for installation into uPVC channels in place of glass window panes.

Only available with flanged and reversed flange louvres.



Predrilled face fixing holes - FH

5.7mm countersunk fixing holes will be punched into the louvre frame before powder coating, allowing quick and easy fitting on site.

Number and layout of fixing holes will be appropriate to louvre size. Arrangements can be specified.

Supplied with pozidrive self tapping screws in the same finish as the louvre.

Only available with flanged and reversed flange louvres.



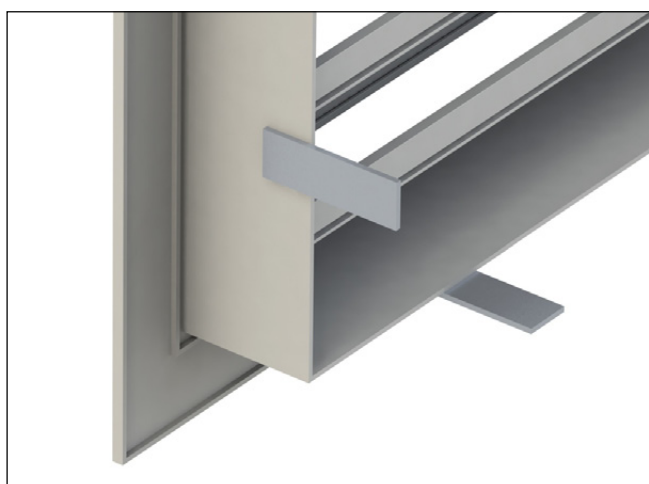
Rear mounted concealed fixing lugs - FL

3mm thick, 25mm wide aluminium lugs, protruding 50mm from the back of the louvre neck can be factory fitted to your louvre.

Lugs are supplied undrilled to accept whatever fixing is required on site, and are either welded or double riveted to the louvre.

An appropriate amount of lugs will be fitted to suit the louvre size.

Only available with flanged and recessed louvres.



Additional options

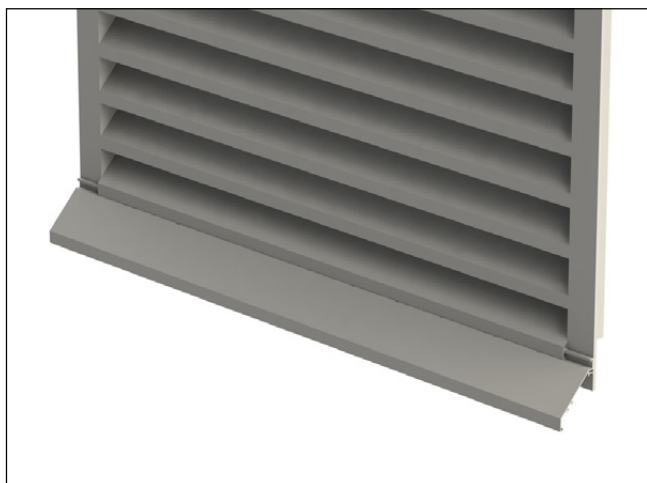
Face mounted drip cill - DC

By fitting an extended cill beneath the bottom blade, any water caught by the louvre is ejected away from the wall, instead of the bottom section of frame.

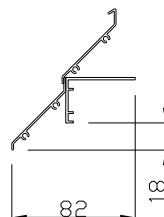
This can help prevent streak marks where water has run down a wall over time.

Available with flanged (shown), recessed and reversed flange louvres.

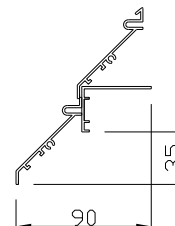
Please note: Recessed and reversed flange louvres will have a folded sheet metal drip cill with a profile appropriate to the selected blade type.



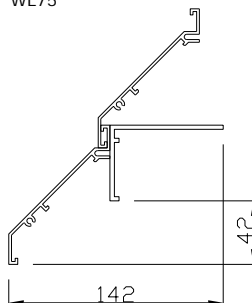
WL38



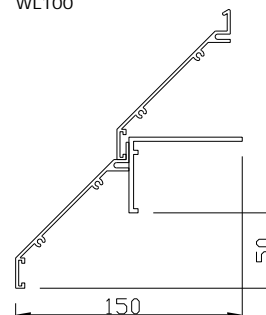
WL50



WL75



WL100



Rear mounted drip tray - DT

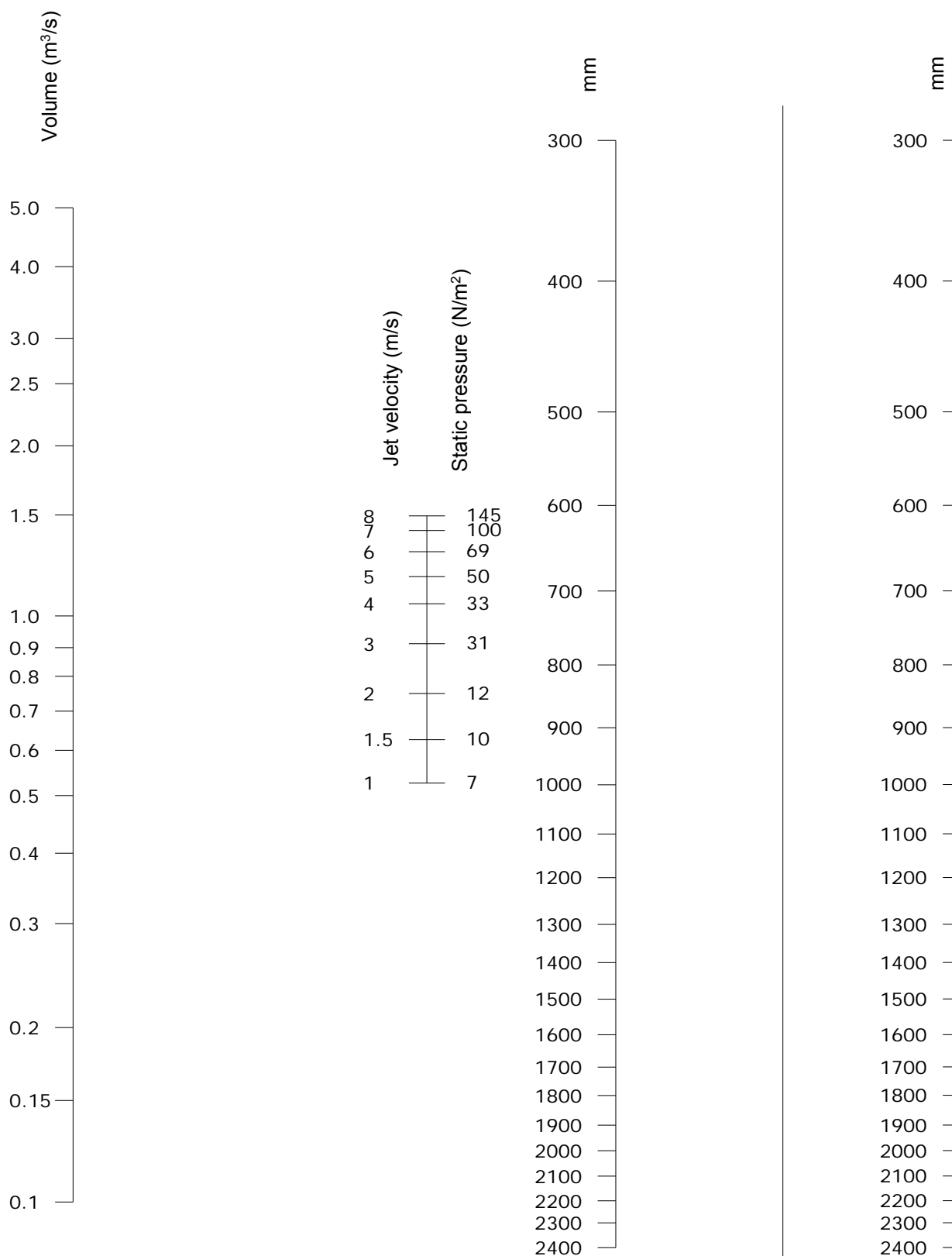
Drip trays can be fitted to any series weather louvre except concealed, however on WL50's and WL75's they are required if Class C rain rejection performance is needed.

Drip trays act to catch any water which penetrates through the louvre.

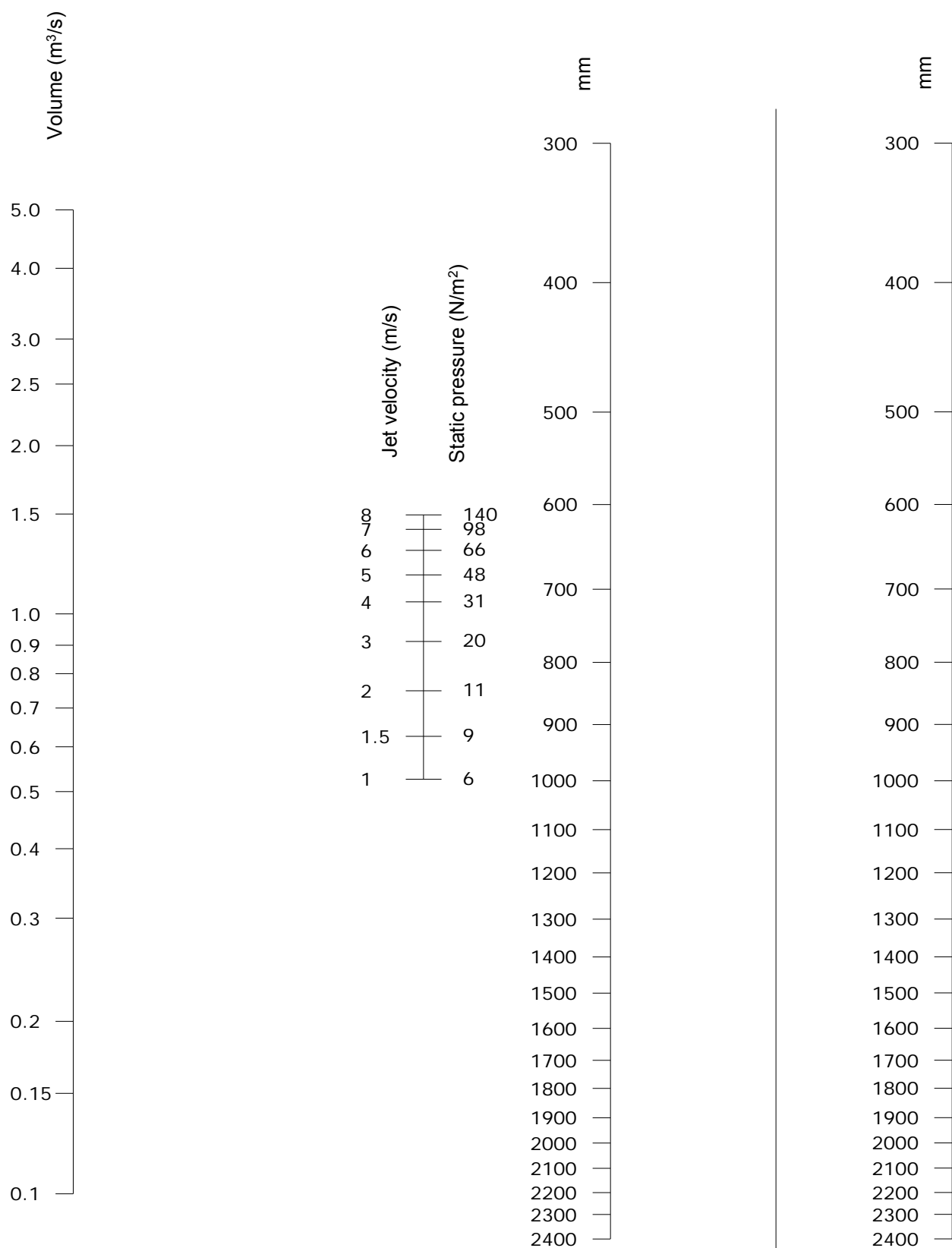
Trays protrude 65mm past the rear of the frame.



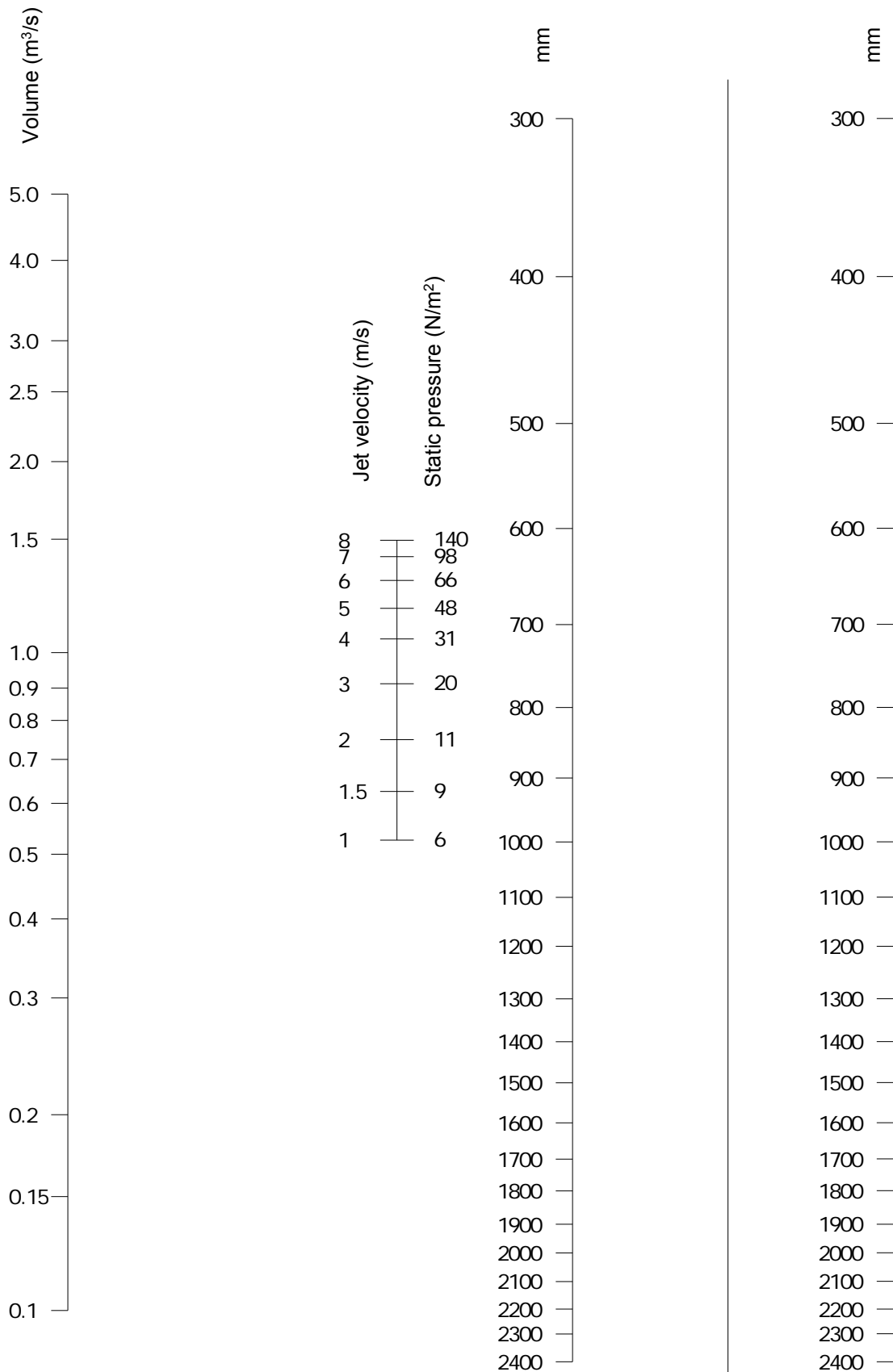
Selection data: WL38 and WL50



Selection data: WL75



Selection data: WL75



Finish

Mill aluminium (standard)

Satin anodised (AA5) - Only with WL38

Polyester powder coating to any RAL or BS colour



Ordering codes

Example

1 - 1000 x 1000 - WL38 - BS - FH - 30FW - DC - RAL9010 - 1S

Codes

1)	Quantity		
2)	Size (mm)	(Width x height)	
3)	Series	WL38 WL50 WL75 WL100	38mm pitch weather louvre 50mm pitch weather louvre 75mm pitch weather louvre 100mm pitch weather louvre
4)	Frame design	(nothing) R REV C	Flanged Recessed Reversed Concealed (not available with WL38)
5)	Debris screens	BS IS	Bird screen (12mm x 12mm mesh) Insect screen
6)	Fixings	FH FL GZ	Predrilled face fixing holes Rear mounted fixing lugs Glazing bar. State depth required.
7)	Flanges	30FW 50FS 75FS 100FS 50FD 75FD 100FD	WL38 and WL50: 30mm flat flange (standard) 50mm flat flange - shallow (optional) 75mm flat flange - shallow (optional) 100mm flat flange - shallow (optional) WL75 and WL100: 50mm flat flange - deep (standard) 75mm flat flange - deep (optional) 100mm flat flange - deep (optional)
8)	Additional options	DC DT	Face mounted drip cill (not available with concealed louvres) Rear mounted drip tray (required for Class C performance with WL50 and WL75)
9)	Finish	Mill SAA RAL... BS...	Mill aluminium (standard) Satin anodised - AA5 (optional with WL38) Polyester powder coated to RAL... Polyester powder coated to BS...
10)	Sections	_S	Number of sections required. If left blank this will be confirmed on order acknowledgement.

Leave code section blank if no option is required.

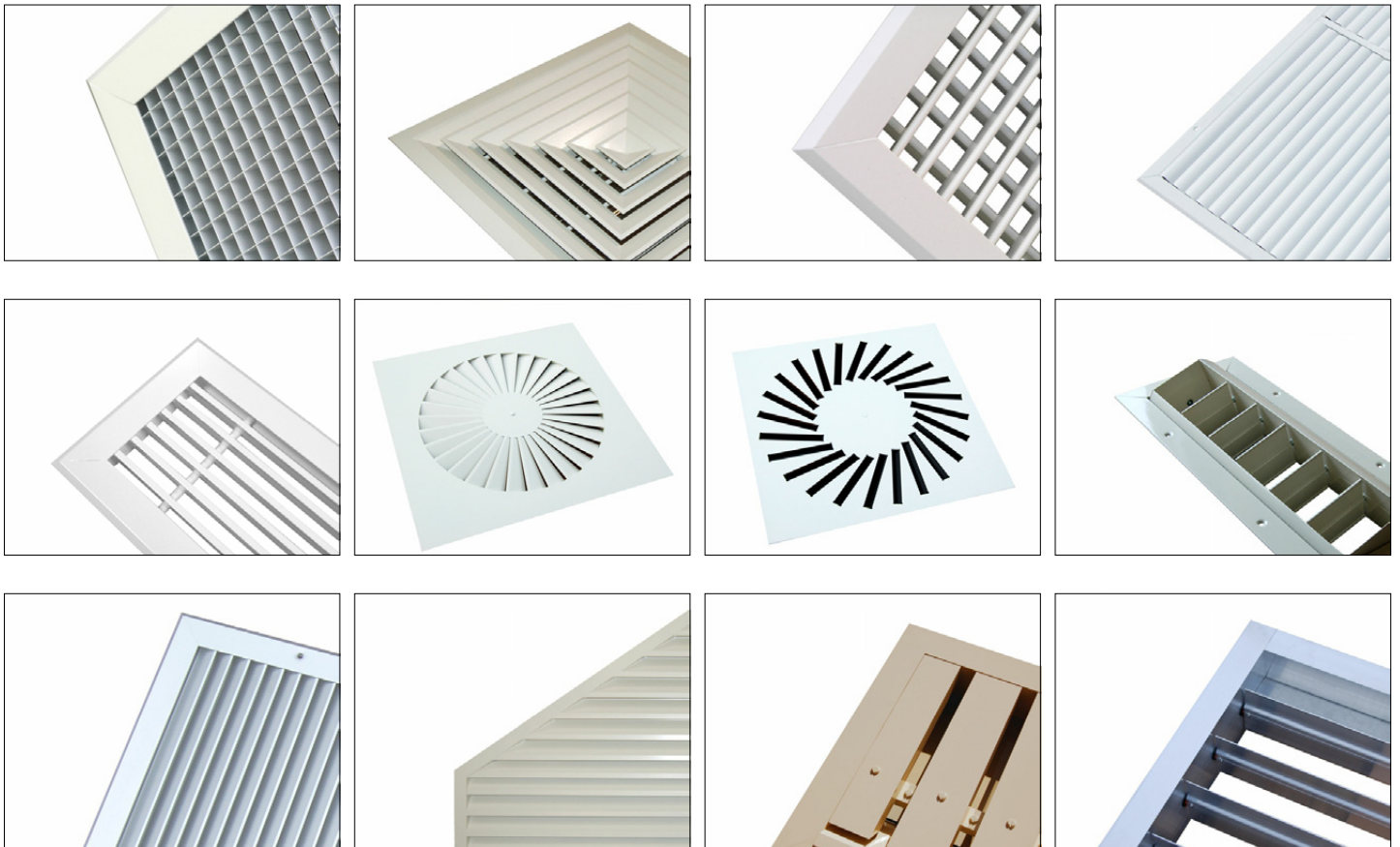
Unless stated, sizes are taken to be nominal, and will have a tolerance removed to aid fitting.

HVC & NCA products

HVC offer the significant advantage of manufacturing both in duct and duct terminal equipment, making us a one stop shop for all your HVAC needs.

The products shown below are a selection, not an exhaustive list. Go to www.h-v-c.com for details on all HVC and NCA products.

HVC: Grilles, Diffusers, Louvres and Volume Control Dampers



NCA: Fire and Volume Control Dampers





Assessed to ISO 9001:2008
Cert/Ref No. 1186

HVC Supplies (Stourbridge) Ltd
Jason House
Amblecote
West Midlands
DY8 4EY
United Kingdom

Tel: +44 (0)1384 376555
Fax: +44 (0)1384 392555

sales@h-v-c.com

www.h-v-c.com

All details within this brochure are correct at time of publication. However HVC's policy is one of continual product development. The right is reserved to alter any details published in this brochure without any prior notice. Any changes will appear on www.h-v-c.com as soon as is practically possible.

All information in this brochure is designed to be used for informative purposes only. HVC will not be legally bound by anything contained within this publication, or any other information distributed.

All references to companies not part of the HVC group of companies are used with the permission of their respective owners.