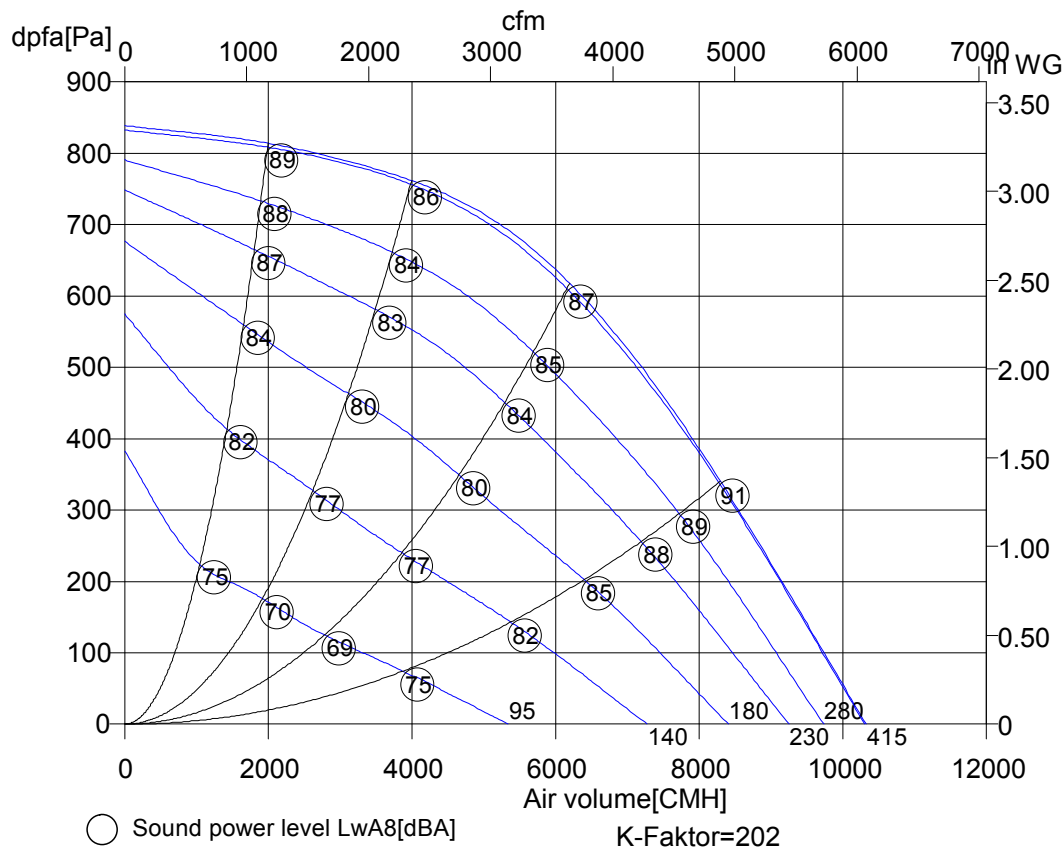


Wednesday, 14. August 2013



Free running impeller
With backward curved 7-blade aluminium
high efficiency impeller



DKH_500-4_B160.6LA

Art. No.	
U[V]	400 D
f[Hz]	50
P[kW]	1.90
I[A]	3.4
n[1/min]	1390
C[μF]	-
tR[°C]	70
dpst[Pa]	-
Delta I[%]	19.
Ia/In	5.0
IP	54
Weight[kG]	27.5
Wir. diagr.	01.006
Overall eff	55.4
Eff. Grade N	63.0
Power input	1.86
Air flow	5643
Press. increase	656
Speed n	1390

Octave sound power level

f[Hz]	125	250	500	1000	2000	4000	8000
LwA8[dBA]:	-11	-9	-6	-5	-8	-12	-21
LwA6[dBA]:	-14	-12	-9	-8	-11	-15	-24
LwA5[dBA]:	-19	-14	-13	-11	-13	-18	-25

Wednesday, 14.August 2013



Free running impeller
With backward curved 7-blade aluminium
high efficiency impeller

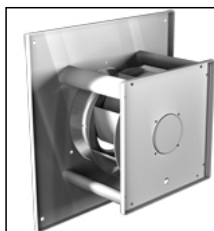
DKH_500-4_B160.6LA

No drawing available

Wednesday, 14.August 2013

Pos.	Pieces	Description	Price
		<p>Rosenberg radial fans with free-running impeller -KH- series</p> <p>The single inlet, backward curved high efficiency impeller from sea-waterproof aluminium, mounted onto the speed controllable external rotor motor, equipped with an air flow optimized inlet cone from galvanized sheet steel. The impeller can be supplied as single unit or as a complete module of galvanized sheet steel.</p> <p>The fan is balanced on two levels according to quality class G 2.5, DIN/ISO 1940.</p> <p>Closed motor, protection class IP 44/54 with protection against humidity and thermal contacts wired in windings for motor protection. Maintenance free ball bearings, closed on both sides, sealed for life. Electrical connection through terminal box (not connected) in IP 44.</p> <p>Documentation : Declaration of incorporation and operating instruction are according to Machinery Directive 2006/42/EC, CE identification in accordance to EMC-directive 2004/108/EC and Low Voltage Directive 2006/95/EC. Motor operating instruction is available from motor manufacturer.</p> <	

Wednesday, 14.August 2013



Free running impeller

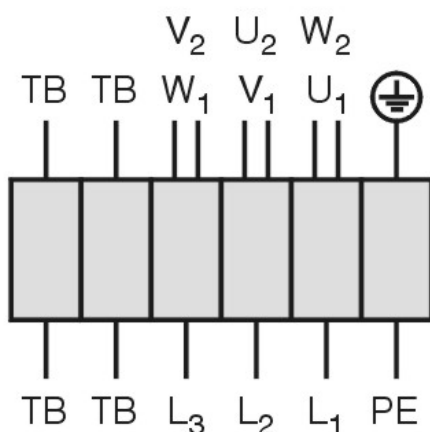
With backward curved 7-blade aluminium
high efficiency impeller

DKH_500-4_B160.6LA

Drehstrommotor in Δ -Schaltung mit Thermostatschalter (TB).
Drehrichtungsänderung durch Vertauschen von 2 Phasen.

**Three phase motor in delta connection with thermostatic
switch (TB). Changing of rotation direction by
interchanging of 2 phases.**

***Moteur triphasé branché en triangle avec interrupteur
thermostatique (TB). Changement de sens de rotation par
inversion de deux phases.***



U ₁	braun / brown / brun
V ₁	blau / blue / bleu
W ₁	schwarz / black / noir
U ₂	rot / red / rouge
V ₂	grau / grey / gris
W ₂	orange / orange / orange
TB	weiß / white / blanc
PE	gelb-grün yellow-green jaune-vert

01.006

TK3-20004