

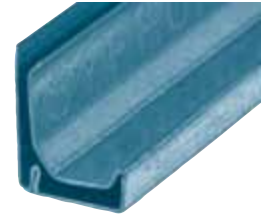
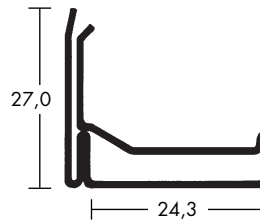
1.1 MEZ-SYPHON-FLANGE®



1.1.2 MEZ-SYPHON-FLANGE SYSTEM 30

Complies to all requirements under DIN 24194 / part 1

- Higher degree of tightness through an integrated siphon
- **138 S** with injected sealing compound (sealant)
- Profile length: 5000 mm



Art.-Nr	Material	Material thickness/mm	Moment of inertia/cm ⁴	VPE m	Weight kg/m
138	Galvanised steel	0,80	0,863	500	0,720
138 S	Galvanised steel	0,80	0,863	500	0,720
138 E	Stainless steel	0,80	0,863	500	0,720

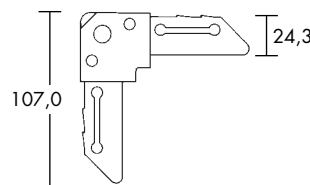
Workmanship Guidelines:

Maximum edge length (mm)		
500 PA	1000 PA	2500 PA
1600 mm	1400 mm	1200 mm

- The duct grooved seams do not need to be notched up
- For details on frame production see technical features

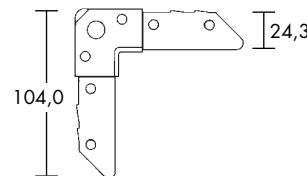
MEZ-CORNER

- Corner to be attached to the duct wall
- Sealing of the corners done on the inside of the air duct wall.



Art.-Nr	Material	Material thickness/mm	Screw hole mm	Deduction mass mm	VPE units	Weight kg/piece
238	Galvanised steel	3,50	11	30	250	0,100

- Corner to be inserted into the duct wall
- Sealing done on the front side of duct and on the inside board of the angled corner



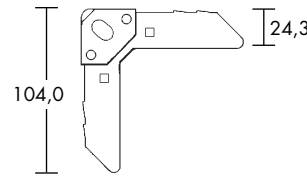
Art.-Nr	Material	Material thickness/mm	Screw hole mm	Deduction mass mm	VPE units	Weight kg/piece
239/1	Galvanised steel	3,00	11	30	250	0,090
239 E	Stainless steel	3,00	11	30	250	0,090



1.1.2 MEZ-SYPHON-FLANGE **SYSTEM 30**

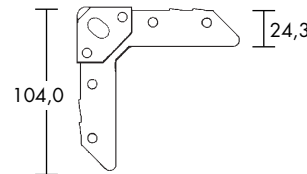
MEZ-CORNER

- Corner with elongated hole and drive in groove
- Corner to be inserted into the duct wall
- Sealing done on the front side of duct and on the inside board of the angled corner



Art.-Nr	Material	Material thickness/mm	Screw hole mm	Deduction mass mm	VPE units	Weight kg/piece
239/2	Galvanised steel	3,00	11 x 15	30	250	0,090

- Corner with elongated hole and short deduction mass
- Corner to be inserted into the duct wall
- Sealing done on the front side of duct and on the inside board of the angled corner



Art.-Nr	Material	Material thickness/mm	Screw hole mm	Deduction mass mm	VPE units	Weight kg/piece
239/3	Galvanised steel	3,00	11 x 15	10	250	0,090

