

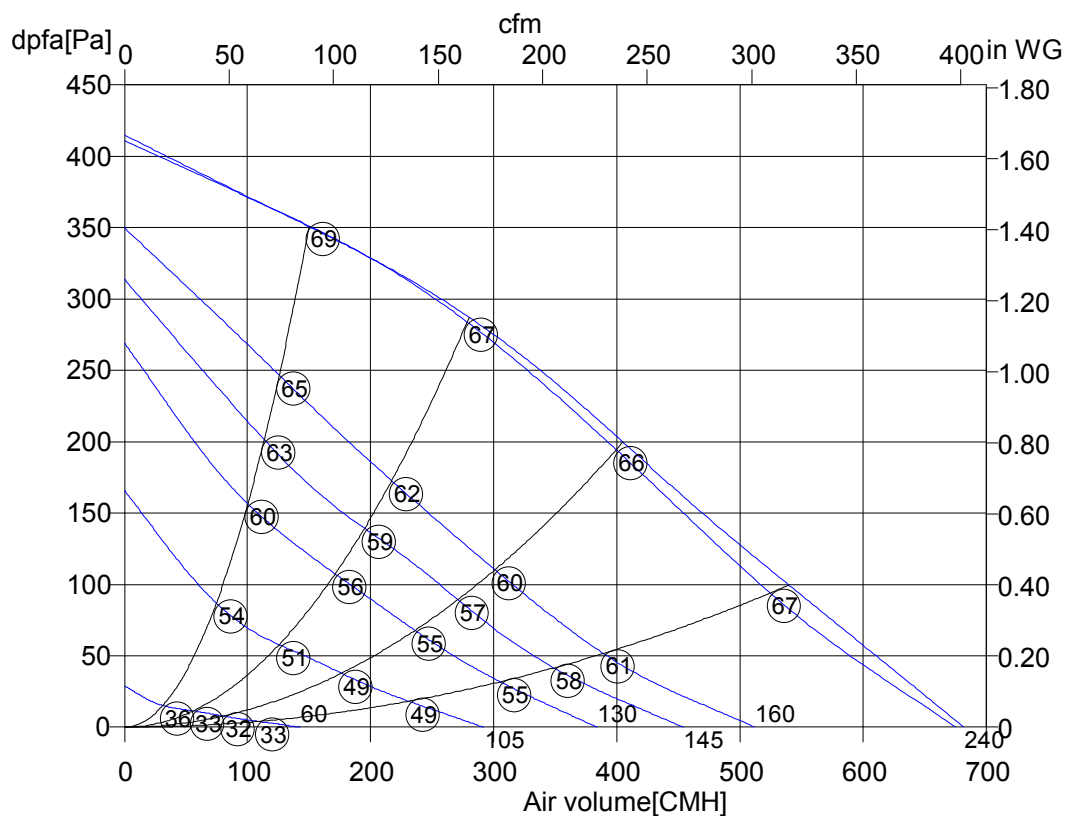
Monday, 10. September 2012



Tube fan

ErP

Product is
not affected by the Directive



○ Sound power level LwA2[dBA]

RS 160 L	
Art. No.	F00-16060
U[V]	230
f[Hz]	50
P[kW]	0.115
I[A]	0.49
n[1/min]	2440
C[μF]	3
tR[°C]	50
dpst[Pa]	-
Delta I[%]	-
Ia/In	1.5
IP	44
Weight[kG]	3.2
Wir. diagr.	01.009

Octave sound power level

f[Hz]	125	250	500	1000	2000	4000	8000
LwA2[dBA]:	-13	-11	-3	-4	-7	-15	-24
LwA5[dBA]:	-22	-9	-6	-4	-5	-8	-17
LwA6[dBA]:	-22	-10	-10	-5	-3	-7	-15

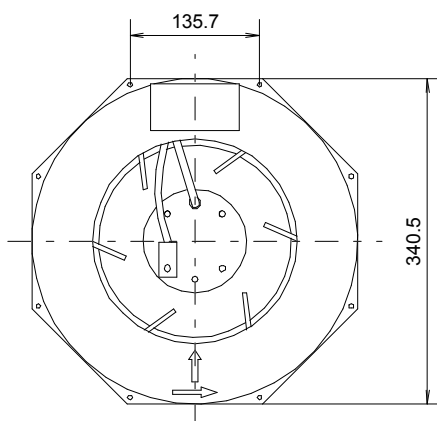
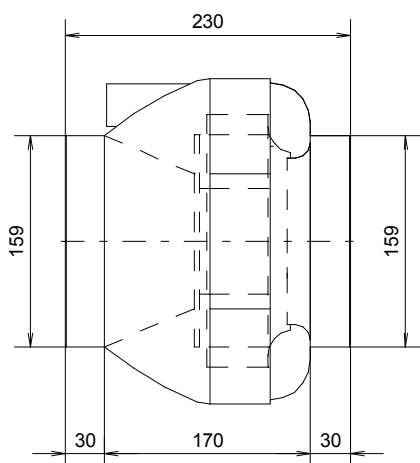


Monday, 10. September 2012



Tube fan

RS 160 L



Monday, 10.September 2012

[illegible]

Monday, 10. September 2012



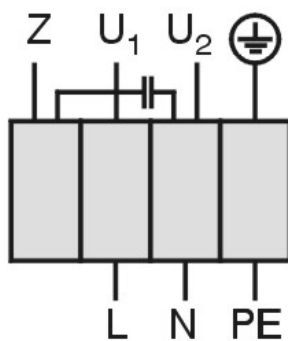
Tube fan

RS 160 L

Einphasenwechselstrommotor mit Betriebskondensator und Thermostatschalter.
Thermostatschalter intern mit der Wicklung in Reihe geschaltet.

Single phase A.C. motor with operating capacitor and thermostatic switch.
Thermostatic switch internal wired in series with windings.

***Moteur monophasé avec condensateur permanent et interrupteur
thermostatique en série avec le bobinage en cas de branchement***



U₁ blau / blue / bleu
U₂ schwarz / black / noir
Z braun / brown / brun
PE gelb-grün
yellow-green
jaun-vert

01.009

TK3-20005