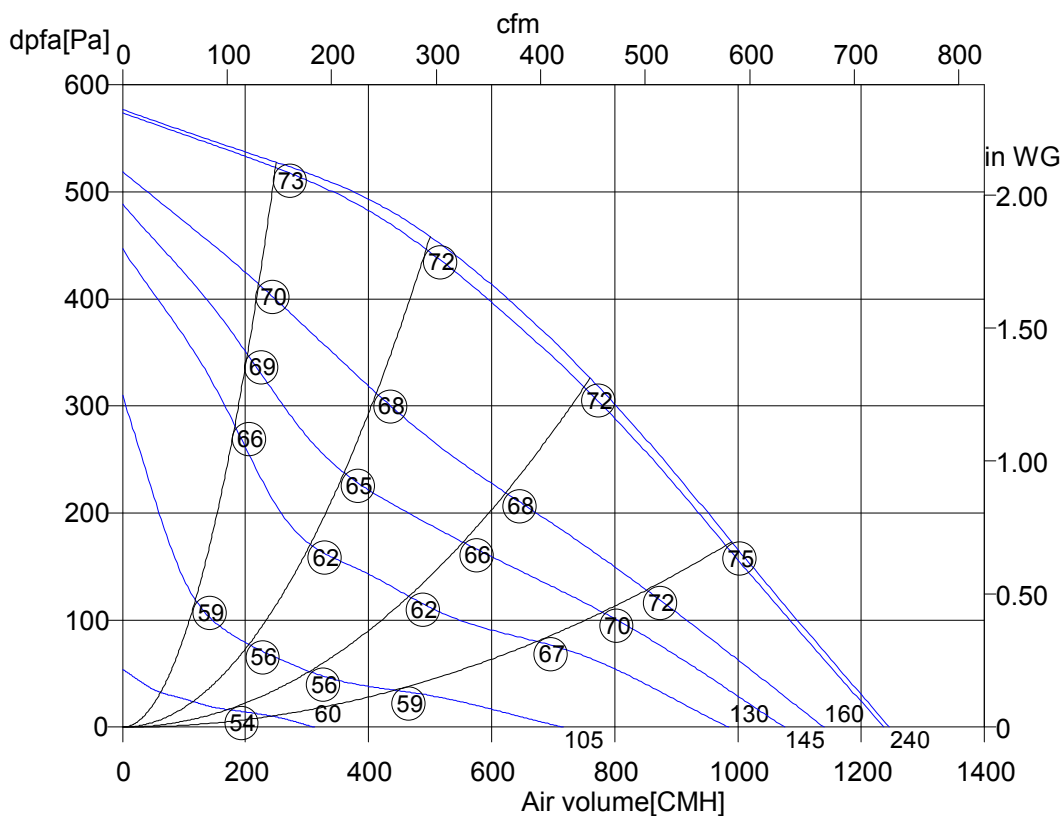


Friday, 26.June 2015



## Tube fan with casing made of plastic



### RS 315 M.3EF

Art. No.	F00-31562
U[V]	230
f[Hz]	50
P[kW]	0.20
I[A]	0.85
n[1/min]	2670
C[μF]	6
tR[°C]	70
dpst[Pa]	-
Delta I[%]	18
Ia/In	2.4
IP	44
Weight[kG]	5.8
Wir. diag.	01.009
Overall eff	34.8
Eff. Grade N	45.0
Power input	0.190
Air flow	622
Press. increase	387
Speed n	2668

### Octave sound power level

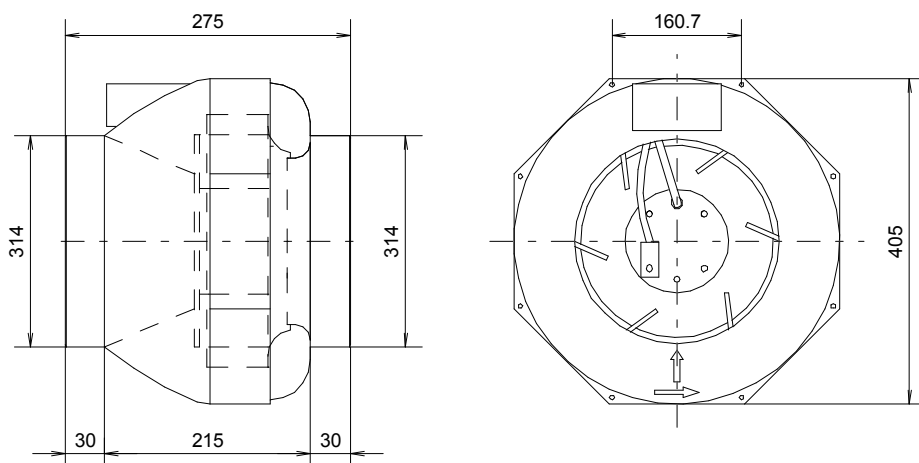
f[Hz]	125	250	500	1000	2000	4000	8000
LwA6[dBA]:	44	58	59	64	66	62	57
LwA5[dBA]:	44	62	63	67	63	62	56
LwA2[dBA]:	37	42	47	47	44	40	31

Friday, 26.June 2015



**Tube fan**  
with casing made of plastic

## RS 315 M.3EF



Friday, 26.June 2015

Pos.	Pieces	Description	Price																														
		<p>Tube fans with casing made of plastic</p> <p>The casing of the RS series is made from shock-proof, recyclable black plastic (PA 6.6 + GF) with integrated terminal box and the possibility to mount a bracket. Inlet and outlet side with duct connection for standard round ducts can be mounted in any position. Both ranges with backward curved impellers made from plastic, size 355 L made from aluminium and with speed controllable external rotor motor, fitted into the impeller. The fans are balanced according to quality level G 2.5, DIN/ISO 1940 on two levels. Motor closed, protection class IP 44/54, with thermal contacts, wired in series in motor windings from size R 355 L. Maintenance free ball bearings, closed on both sides, sealed for life.</p> <p>Documentation: Declaration of incorporation and operating instruction are according to Machinery Directive 2006/42/EC, CE identification in accordance to EMC-directive 2004/108/EC and Low Voltage Directive 2006/95/EC. Motor operating instruction is available from motor manufacturer.</p> <p><b>Nominal data</b></p> <table><tr><td>Type</td><td>RS 315 M.3EF</td></tr><tr><td>Article no.</td><td>F00-31562</td></tr><tr><td>Voltage[V]</td><td>230</td></tr><tr><td>Frequency[Hz]</td><td>50</td></tr><tr><td>Power P1[kW]</td><td>0.20</td></tr><tr><td>Current I[A]</td><td>0.85</td></tr><tr><td>Speed n[1/min]</td><td>2670</td></tr><tr><td>Capacitor C[μF]</td><td>6</td></tr><tr><td>Max. air temp.tR[°C]</td><td>70</td></tr><tr><td>Min. pressure dpst[Pa]</td><td>-</td></tr><tr><td>Delta I[%]</td><td>18</td></tr><tr><td>Startup current Ia/In</td><td>2.4</td></tr><tr><td>Protection-mode</td><td>IP 44</td></tr><tr><td>Weight[kg]</td><td>5.8</td></tr><tr><td>wiring diagram</td><td>01.009</td></tr></table>	Type	RS 315 M.3EF	Article no.	F00-31562	Voltage[V]	230	Frequency[Hz]	50	Power P1[kW]	0.20	Current I[A]	0.85	Speed n[1/min]	2670	Capacitor C[μF]	6	Max. air temp.tR[°C]	70	Min. pressure dpst[Pa]	-	Delta I[%]	18	Startup current Ia/In	2.4	Protection-mode	IP 44	Weight[kg]	5.8	wiring diagram	01.009	
Type	RS 315 M.3EF																																
Article no.	F00-31562																																
Voltage[V]	230																																
Frequency[Hz]	50																																
Power P1[kW]	0.20																																
Current I[A]	0.85																																
Speed n[1/min]	2670																																
Capacitor C[μF]	6																																
Max. air temp.tR[°C]	70																																
Min. pressure dpst[Pa]	-																																
Delta I[%]	18																																
Startup current Ia/In	2.4																																
Protection-mode	IP 44																																
Weight[kg]	5.8																																
wiring diagram	01.009																																

Friday, 26.June 2015



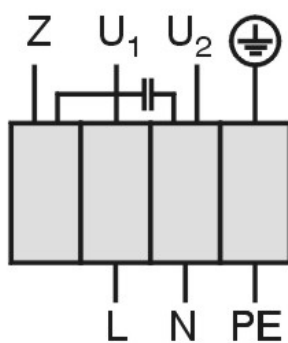
**Tube fan**  
with casing made of plastic

## RS 315 M.3EF

Einphasenwechselstrommotor mit Betriebskondensator und Thermostatschalter.  
Thermostatschalter intern mit der Wicklung in Reihe geschaltet.

**Single phase A.C. motor with operating capacitor and thermostatic switch.**  
**Thermostatic switch internal wired in series with windings.**

***Moteur monophasé avec condensateur permanent et interrupteur  
thermostatique en série avec le bobinage en cas de branchement***



U <sub>1</sub>	blau / blue / bleu
U <sub>2</sub>	schwarz / black / noir
Z	braun / brown / brun
PE	gelb-grün yellow-green jaun-vert

01.009

TK3-20005