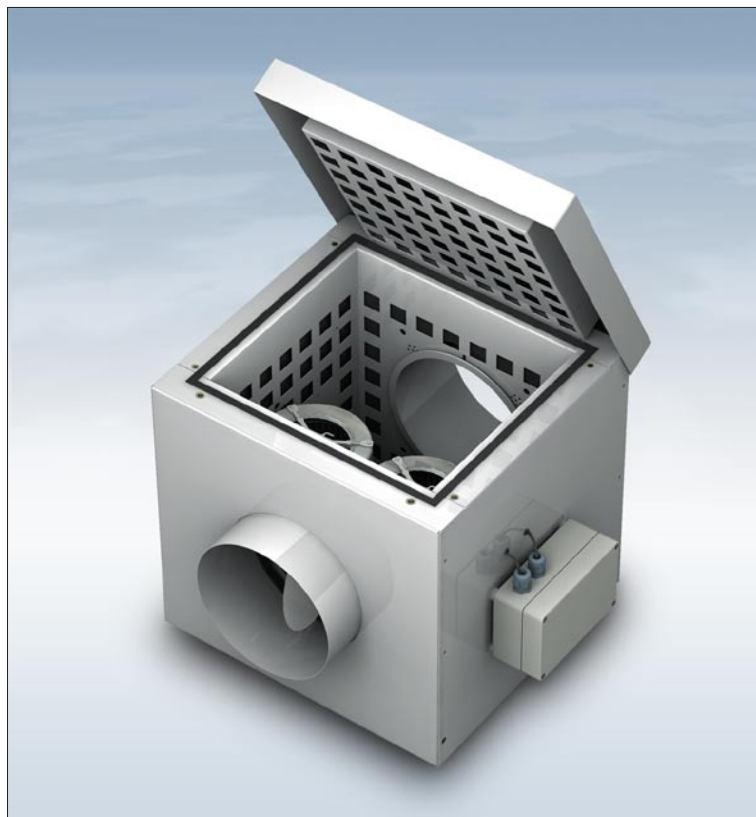


ZeroBox[®] Twin

Ventilation boxes of very low noise level.

With two centrifugal fans of high performance.



ZeroBox[®] Twin

ZeroBox[®] Twin

General description

A complete range of centrifugal ventilation units of very low noise level, solid, versatile and easy to mount. Designed to satisfy the most demanding up-to date installations. To make the installation easier there are available a wide range of accessories: flexible gaskets, shutters, grills, circular and rectangular hoppers, dampers, duct silencers, electrical heating, filtering modules and special accessories on request.

Casing made of galvanised sheet steel with a 50 mm layer of mineral wool, that insulates from noise and external temperature.

impellers, easy to connect to spiral ducts using mounting clamps. Integrated thermal-contacts that protect the motors from overheating with lead for

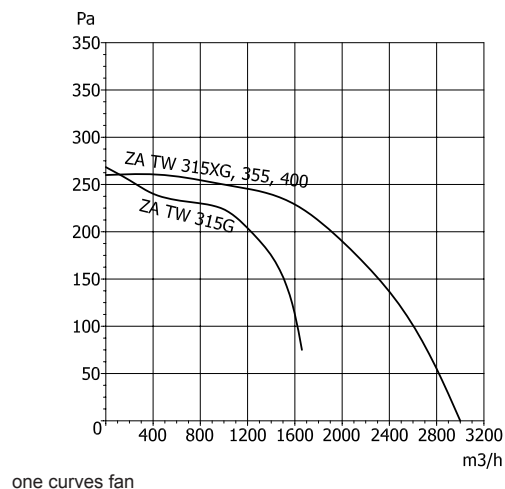
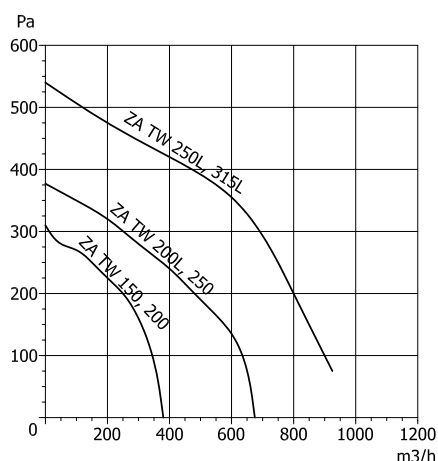


Internally coated with perforated galvanized sheet steel.
Double inlet centrifugal fans with forward-curved



connection to a motor protection device.
Maintenance-free external rotor motors. External terminal box.

Performance curves

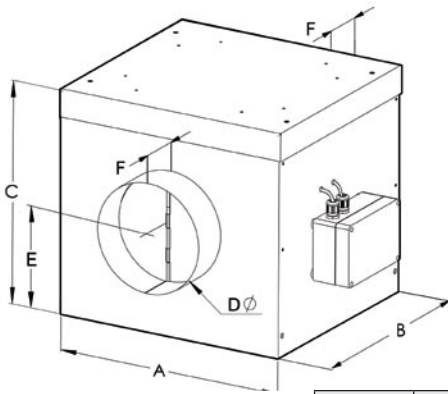


Specifications

		150	200	200L	250	250L	315L	315G	315XG	355	400
Voltage	V/50Hz	230	230	230	230	230	230	230	230	230	230
Phase		1	1	1	1	1	1	1	1	1	1
Power	W	100	100	207	207	268	268	320	570	570	570
Current	A	0,47	0,47	1,1	1,1	1,2	1,2	1,4	2,6	2,6	2,6
Max.airflow	m³/h	375	375	675	675	925	925	1630	3000	3000	3000
Speed	min ⁻¹	1640	1640	1365	1365	1865	1865	1080	1240	1240	1240
Max.Ambience air temp.	°C	70	70	50	50	50	50	40	70	70	70
Noise level	dB(A)	35	35	39	39	42	42	35	38	38	38
Weight	kg	22,5	22,5	26,5	26,5	41	41	57	70	70	70
Isolation class		F	F	F	F	F	F	F	F	F	F
Protection		IP44	IP44	IP44	IP44	IP54	IP54	IP54	IP54	IP54	IP54
Capacitor	µF	2,5	2,5	4	4	6	6	6	12	12	12
5 Steps controller		RE 1,5	RE 1,5	RE 1,5	RE 1,5	RE 1,5	RE 1,5	RE 3,2	RE 3,2	RE 3,2	RE 3,2
Progressive controller*		ETX 2,5	ETX 2,5	ETX 2,5	ETX 2,5	ETX 2,5	ETX 2,5	ETX 2,5	REG 5	REG 5	REG 5

*To be used with the corresponding motor protection.

Dimensions



	150	200	200L	250	250L	315L	315G	315XG	355	400
A	430	430	470	470	550	550	800	800	800	800
B	400	400	440	440	550	550	550	550	550	550
C	408	408	448	448	558	558	558	558	558	558
D	200	200	200	250	250	315	315	315	355	400
E	200	200	250	250	250	280	280	280	280	280
F	50	50	50	50	50	50	50	50	50	50

(Measures in mm)

Controller

The CM-2 is a controller designed for ventilation installations which, the lack of air can cause an important problem.



The system is based on the use of two fans; one of them is operating while the other one is on standby (A and B). It works by detecting electric current or the air flow that the motor produces while working.

If one motor fails a signal goes to the controller, to turn on the reserve motor.

With the aim of balancing the decline of power of both motors, the option exists for making them work in alternate mode on cycles of the same duration, from four minutes to 24 hours.

The option also exists for making them work with no cycle; if after checking the motor A for 30 seconds, and this one works correctly, it automatically changes to B and remains in this state permanently.

The system has status indicators on the control panel and it also has a failure output indicator (optional on the model CM2-1) to indicate the failure of one of the motors, both, or the lack of tension on that part, through insulated relay contacts.

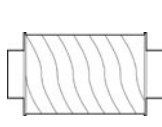
Accessories



Clamp



Vibration damper



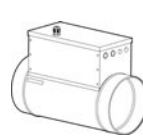
Duct silencer



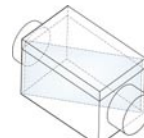
Protection guard



Overpressure shutter



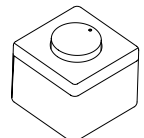
Electrical heater



Air filter box



5-Speed controller



Electronic controller



Conca de Barberà, 6 - Pol. Pla de la Bruguera
E-08211 CASTELLAR DEL VALLÈS (Barcelona) Spain
Tel: + 34 93 715 99 88 - Fax: + 34 93 715 99 89
e-mail: airtecnics@airtecnics.com
<http://www.airtecnics.com>

Distributed by: