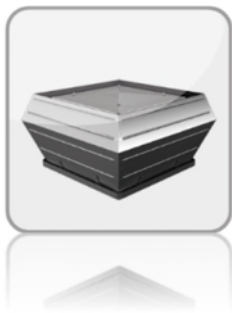


## Roof Fans

DV(S)... / DVE(S)... / DH... / DHE...



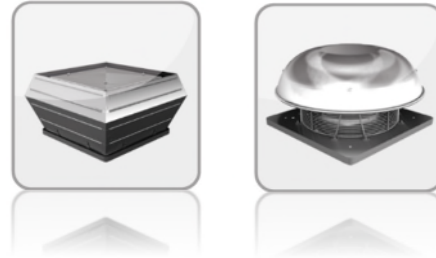
## Contents

3	Description – DV(S)... / DH...
3	Application areas
3	Casing
4	Impellers
4	Motor and motor protection
4	Electrical connection
4	Installation
5	Air volume control
5	Scope of delivery
6	Description – DVE(S)... / DHE...
6	Application areas
6	Casing
7	Impellers
7	Motor and motor protection
7	Electrical connection
7	Installation
8	Air volume control
8	Scope of delivery
9	Construction scheme

## DV(S) / DH – Roof fans

vertical or horizontal outlet

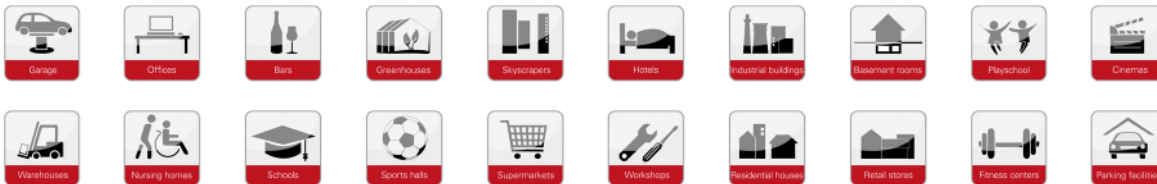
- easy to install
- weatherproof housing
- Motor protection by thermal contacts



### Description:

The Rosenberg roof fans are used for ventilation of department stores, supermarkets, factories, swimming pools, kitchens, dining halls, warehouses, garages, farms and stables. The fans are suitable for mounting on a flat or any shaped roof.

### Application areas:



We distinguish between:

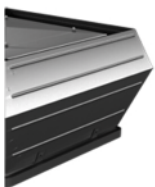
**Type DH with horizontal outlet**

= for less polluted air

**Type DV with vertical outlet**

= for heavily contaminated air

### Casing:



#### Vertical type (DV)

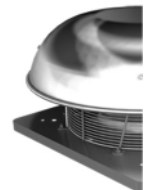
Casing made of seawater-resistant aluminium

#### Vertical type (DVS)

Casing made of seawater-resistant aluminium with integrated sound absorbing cover.

#### Horizontal type (DH)

Cover up to size 500 made of seawater-resistant aluminium,  
from size 560 made of galvanized sheet steel.



#### Base frame (vertical and horizontal)

**Up to size 500:** Base frame with bolts for tightening of inlet accessories and rectangular inlet cone made from galvanized steel;

**From size 560:** additionally plastic coated.

### Impellers:

Impellers are mounted directly to the rotor of the external rotor motor and are balanced dynamically at two levels together with the rotor according to quality level G2.5/G6.3 DIN ISO 21940-11.



**Up to size 560**

Backward curved impellers made of plastic.

**From size 630**

Backward curved impellers made of aluminum.

### Motor and motor protection:

Up to size 800K voltage controllable external rotor motors protection class IP54 with protection against humidity, thermal contact embedded in the windings.



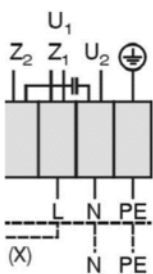
**Up to size 310L**

Motor protection class IP 44.

**From size 355**

Motor protection class IP 54.

### Electrical connection:



The motors are equipped with a built-on terminal box in protection class IP 54 with easy access for electrical connection after removal of the rain cover.

### Installation:



The roof fans are fitted with the required equipment (Flat roof socket, Base for sloping roof, Socket sound absorber and Sound absorber for sloping roof 1-45°) on the roof. The pre-assembled threaded stud allows easy and effortless installation.

### Air volume control:

For more information see accessories!

#### ERP-Reference (only inside the EU):

Please note the directives 1253/2014/EU (Lot 6) applying from 01.01.2016 for the ventilation units (ventilation fans).  
 Keyword: „Multi-stage drive" (at least 3 fixed speeds, as well as speed 0 („off"). Suitable control and regulation devices are available as accessories.



#### 5-speed control unit:

**DV...E:** 230V → RTE

**DV...D:** 400V → RTD

#### Infinitely variable control unit:

**DV...E:** 230V → ED / REE ...

**DV...D:** 400V → RED ...

**DV...D:** 400V → Frequency converter / **WARNING:** up to max. 50Hz



### Only outside of the EU (ERP-Directive 1253/2014/EU)

#### 2-speed control unit:

(see ERP-reference „multi-stage-drive")

**DV...E:** 230V → either high or low speed is possible, depending on the connecting in the terminal box (Wiring diagram 01.020).

**DV...D:** 400V → MSD 2

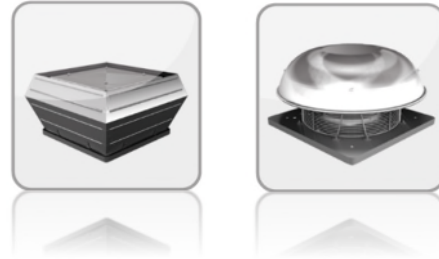
### Scope of delivery:

- Roof fan (DV / DVS / DH)
- Documentation

## DVE(S) / DHE – Roof fans

vertical or horizontal outlet

- easy to install
- weatherproof housing
- Motor protection by thermal contacts



### Description:

The Rosenberg roof fans are used for ventilation of department stores, supermarkets, factories, swimming pools, kitchens, dining halls, warehouses, garages, farms and stables. The fans are suitable for mounting on a flat or any shaped roof.

### Application areas:



We distinguish between:

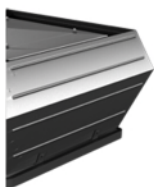
**Type DHE with horizontal outlet**

= for less polluted air

**Type DVE with vertical outlet**

= for heavily contaminated air

### Casing:



#### Vertical type (DVE)

Casing made of seawater-resistant aluminium

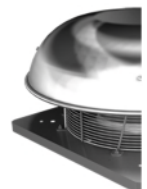
#### Vertical type (DVES)

Casing made of seawater-resistant aluminium with integrated sound absorbing cover.

#### Horizontal type (DHE)

**Up to size 500:** Casing made of seawater-resistant aluminium

**From size 560:** Casing made of galvanized sheet steel



#### Base frame:

**Up to size 500**

= Base frame with bolts for tightening of inlet accessories and rectangular inlet cone made of galvanized steel.

**From size 560**

= Base frame with bolts for tightening of inlet accessories and rectangular inlet cone made of galvanized steel, additionally plastic coated.

### Impellers:



**DHE**  
**DVE / DVES**

Efficiency optimized backward curved impellers of the E series "Revolution". Impellers are mounted directly to the rotor of the external rotor motor and are balanced dynamically at two levels together with the rotor according to quality level G2.5/G6.3 DIN ISO 21940-11.

**Up to sizes 560** made of plastic  
**From sizes 630** made of aluminum

### Motor and motor protection:

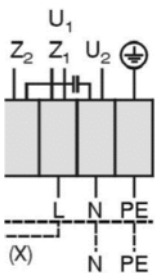
Voltage controllable external rotor motors protection class IP54 with protection against humidity, thermal contact embedded in the windings.



**DHE**  
**DVE / DVES**

Motor protection class IP 54.

### Electrical connection:



The motors are equipped with a built-on terminal box in protection class IP 54 with easy access for electrical connection after removal of the rain cover.

### Installation:



The roof fans are fitted with the required equipment (Flat roof socket, Base for sloping roof, Socket sound absorber and Sound absorber for sloping roof 1-45°) on the roof. The pre-assembled threaded stud allows for easy and effortless installation.

**Air volume control:**

For more information see accessories!

**ERP-Reference (only inside the EU):**

Please note the directives 1253/2014/EU (Lot 6) applying from 01.01.2016 for the ventilation units (ventilation fans). Keyword: „Multi-stage drive" (at least 3 fixed speeds, as well as speed 0 („off"). Suitable control and regulation devices are available as accessories.



**5-speed control unit:**

**DVE...E:** 230V → RTE

**DVE...D:** 400V → RTD

**Infinitely variable control unit:**

**DVE...E:** 230V → ED / REE

**DVE...D:** 400V → RED

**DVE...D:** 400V → Frequency converter / **WARNING:** up to max. 50Hz



**Only outside of the EU** (ERP-Directive 1253/2014/EU)

**2-speed control unit:**

(see ERP-reference „multi-stage-drive")

**DVE...D:** 400V → MSD 2

**Scope of delivery:**

- Roof fan (DHE / DVE / DVES)
- Documentation



### Construction scheme:

