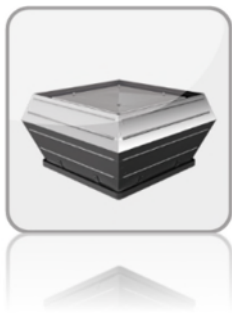


Roof Fans

DV(S)... / DVE(S)... / DH... / DHE...



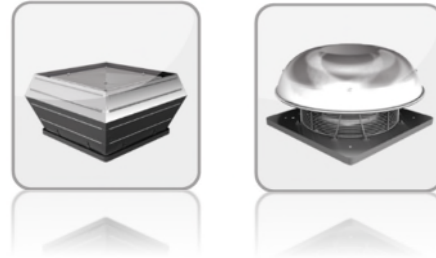
Contents

3	Description – DV(S)... / DH...
3	Application areas
3	Casing
4	Impellers
4	Motor and motor protection
4	Electrical connection
4	Installation
5	Air volume control
5	Scope of delivery
6	Description – DVE(S)... / DHE...
6	Application areas
6	Casing
7	Impellers
7	Motor and motor protection
7	Electrical connection
7	Installation
8	Air volume control
8	Scope of delivery
9	Construction scheme

DV(S) / DH – Roof fans

vertical or horizontal outlet

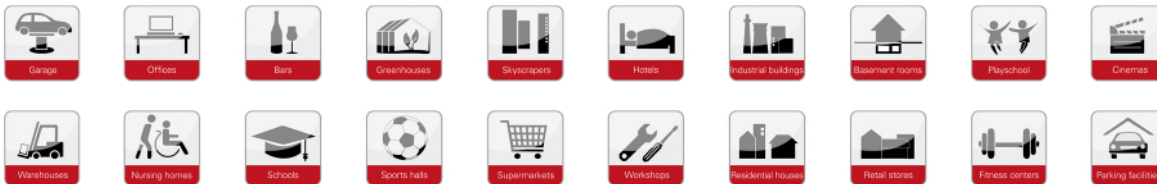
- easy to install
- weatherproof housing
- Motor protection by thermal contacts



Description:

The Rosenberg roof fans are used for ventilation of department stores, supermarkets, factories, swimming pools, kitchens, dining halls, warehouses, garages, farms and stables. The fans are suitable for mounting on a flat or any shaped roof.

Application areas:



We distinguish between:

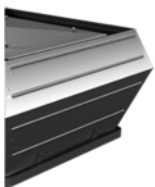
Type DH with horizontal outlet

= for less polluted air

Type DV with vertical outlet

= for heavily contaminated air

Casing:



Vertical type (DV)

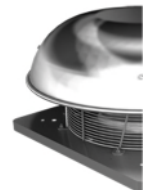
Casing made of seawater-resistant aluminium

Vertical type (DVS)

Casing made of seawater-resistant aluminium with integrated sound absorbing cover.

Horizontal type (DH)

Cover up to size 500 made of seawater-resistant aluminium,
from size 560 made of galvanized sheet steel.



Base frame (vertical and horizontal)

Up to size 500: Base frame with bolts for tightening of inlet accessories and rectangular inlet cone made from galvanized steel;

From size 560: additionally plastic coated.

Impellers:

Impellers are mounted directly to the rotor of the external rotor motor and are balanced dynamically at two levels together with the rotor according to quality level G2.5/G6.3 DIN ISO 21940-11.



Up to size 560

Backward curved impellers made of plastic.

From size 630

Backward curved impellers made of aluminum.

Motor and motor protection:

Up to size 800K voltage controllable external rotor motors protection class IP54 with protection against humidity, thermal contact embedded in the windings.



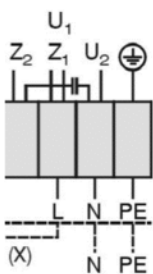
Up to size 310L

Motor protection class IP 44.

From size 355

Motor protection class IP 54.

Electrical connection:



The motors are equipped with a built-on terminal box in protection class IP 54 with easy access for electrical connection after removal of the rain cover.

Installation:



The roof fans are fitted with the required equipment (Flat roof socket, Base for sloping roof, Socket sound absorber and Sound absorber for sloping roof 1-45°) on the roof. The pre-assembled threaded stud allows easy and effortless installation.

Air volume control:

For more information see accessories!

ERP-Reference (only inside the EU):

Please note the directives 1253/2014/EU (Lot 6) applying from 01.01.2016 for the ventilation units (ventilation fans).
 Keyword: „Multi-stage drive" (at least 3 fixed speeds, as well as speed 0 („off"). Suitable control and regulation devices are available as accessories.



5-speed control unit:

DV...E: 230V → RTE

DV...D: 400V → RTD

Infinitely variable control unit:

DV...E: 230V → ED / REE ...

DV...D: 400V → RED ...

DV...D: 400V → Frequency converter / **WARNING:** up to max. 50Hz



Only outside of the EU (ERP-Directive 1253/2014/EU)

2-speed control unit:

(see ERP-reference „multi-stage-drive")

DV...E: 230V → either high or low speed is possible, depending on the connecting in the terminal box (Wiring diagram 01.020).

DV...D: 400V → MSD 2

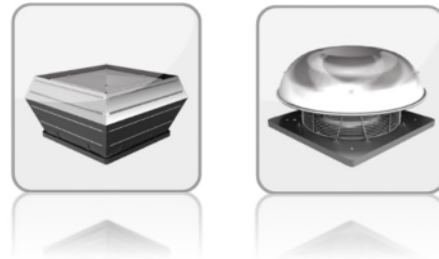
Scope of delivery:

- Roof fan (DV / DVS / DH)
- Documentation

DVE(S) / DHE – Roof fans

vertical or horizontal outlet

- easy to install
- weatherproof housing
- Motor protection by thermal contacts



Description:

The Rosenberg roof fans are used for ventilation of department stores, supermarkets, factories, swimming pools, kitchens, dining halls, warehouses, garages, farms and stables. The fans are suitable for mounting on a flat or any shaped roof.

Application areas:



We distinguish between:

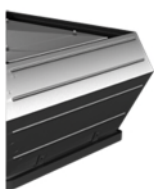
Type DHE with horizontal outlet

= for less polluted air

Type DVE with vertical outlet

= for heavily contaminated air

Casing:



Vertical type (DVE)

Casing made of seawater-resistant aluminium

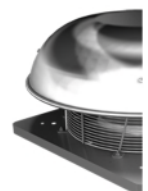
Vertical type (DVES)

Casing made of seawater-resistant aluminium with integrated sound absorbing cover.

Horizontal type (DHE)

Up to size 500: Casing made of seawater-resistant aluminium

From size 560: Casing made of galvanized sheet steel



Base frame:

Up to size 500

= Base frame with bolts for tightening of inlet accessories and rectangular inlet cone made of galvanized steel.

From size 560

= Base frame with bolts for tightening of inlet accessories and rectangular inlet cone made of galvanized steel, additionally plastic coated.

Impellers:



**DHE
DVE / DVES**

Efficiency optimized backward curved impellers of the E series "Revolution". Impellers are mounted directly to the rotor of the external rotor motor and are balanced dynamically at two levels together with the rotor according to quality level G2.5/G6.3 DIN ISO 21940-11.

Up to sizes 560 made of plastic
From sizes 630 made of aluminum

Motor and motor protection:

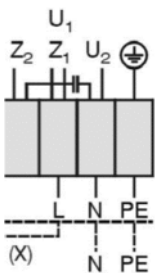
Voltage controllable external rotor motors protection class IP54 with protection against humidity, thermal contact embedded in the windings.



**DHE
DVE / DVES**

Motor protection class IP 54.

Electrical connection:



The motors are equipped with a built-on terminal box in protection class IP 54 with easy access for electrical connection after removal of the rain cover.

Installation:



The roof fans are fitted with the required equipment (Flat roof socket, Base for sloping roof, Socket sound absorber and Sound absorber for sloping roof 1-45°) on the roof. The pre-assembled threaded stud allows for easy and effortless installation.

Air volume control:

For more information see accessories!

ERP-Reference (only inside the EU):

Please note the directives 1253/2014/EU (Lot 6) applying from 01.01.2016 for the ventilation units (ventilation fans). Keyword: „Multi-stage drive" (at least 3 fixed speeds, as well as speed 0 („off"). Suitable control and regulation devices are available as accessories.



5-speed control unit:

DVE...E: 230V → RTE

DVE...D: 400V → RTD

Infinitely variable control unit:

DVE...E: 230V → ED / REE

DVE...D: 400V → RED

DVE...D: 400V → Frequency converter / **WARNING:** up to max. 50Hz



Only outside of the EU (ERP-Directive 1253/2014/EU)

2-speed control unit:

(see ERP-reference „multi-stage-drive")

DVE...D: 400V → MSD 2

Scope of delivery:

- Roof fan (DHE / DVE / DVES)
- Documentation

Construction scheme:

