

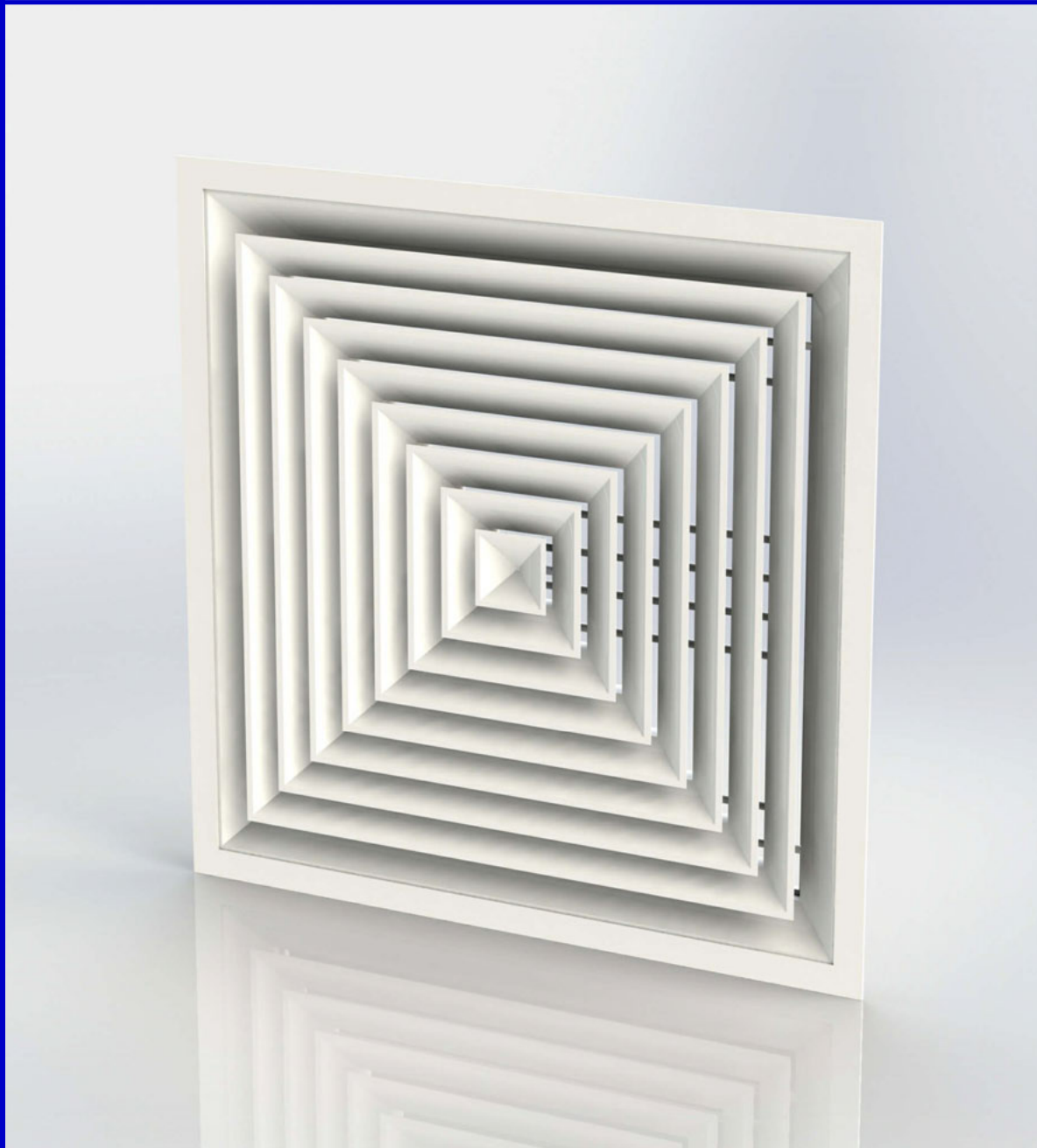


*Incorporating*



**Series CD**  
Louvre faced ceiling diffusers

- Consistently popular diffuser used in countless installations worldwide
- Effective diffusion characteristics for maximum mixing of resident and supplied air
- High quality extruded aluminium construction
- Popular sizes held in stock for immediate despatch



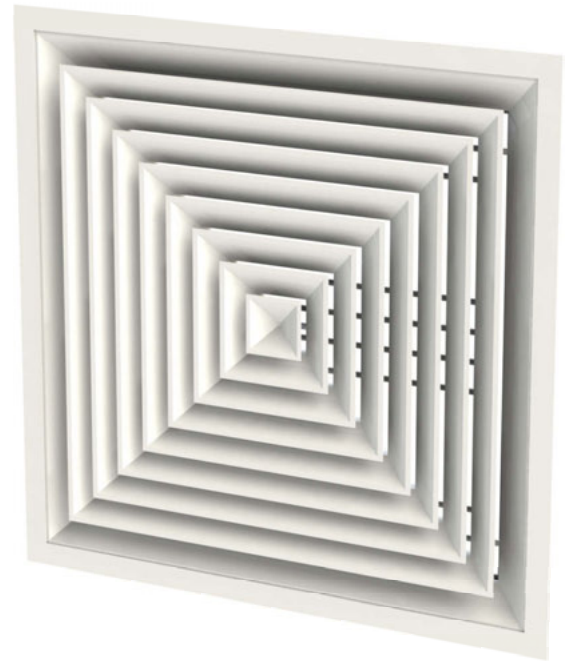
## Series CD

Used in countless installations throughout the world, louvre faced ceiling diffusers are a consistently popular product, well regarded due to their architectural appearance and high performance diffusion characteristics.

HVC Series CD ceiling diffusers make use of lightweight aluminium extrusions with fully mitred corners, and are of a higher quality than many cheaper pressed units.

We hold large quantities of popular sizes of CD4 in stock, giving us the capability to supply even the largest orders on a next day basis.

For non standard sizes, units are manufactured to order in any size and with any blow pattern.



## Design features

<b>Material</b>	Extruded aluminium frame and blades
<b>Construction</b>	Fully welded with pressed in corners in frames Blade rings crimped onto aluminium tubes
<b>Sizes</b>	Minimum: 150mm x 150mm Maximum single unit: 2900mm x 2900mm <b>Important note:</b> Unless stated Series CD diffuser sizes relate to the diffuser neck, not the nominal. Please see page 3 for more details.
<b>Fixings</b>	Standard: None Optional: Countersunk face fixing holes
<b>Finish</b>	Standard: Mill aluminium Optional: See page 18 Stock units are powder coated RAL9010
<b>Mass/m<sup>2</sup> face area</b>	8.5 kg 16 kg including opposed blade damper

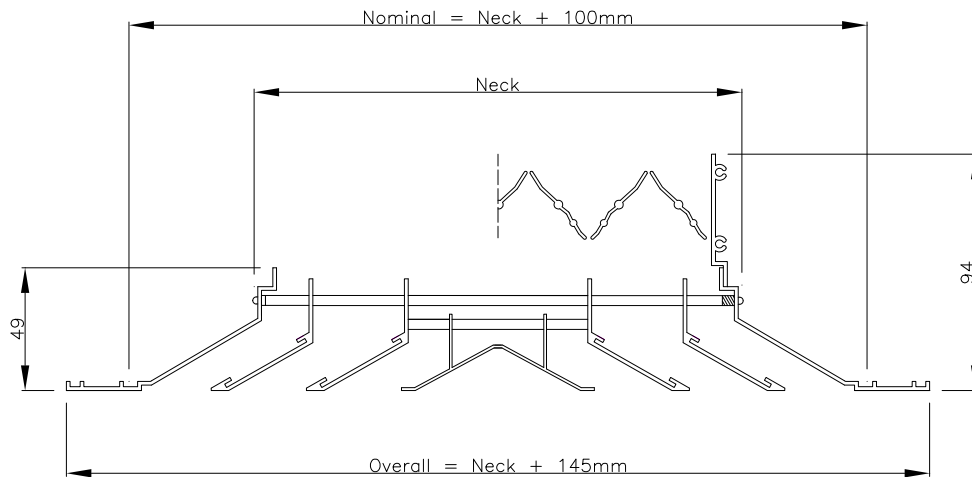
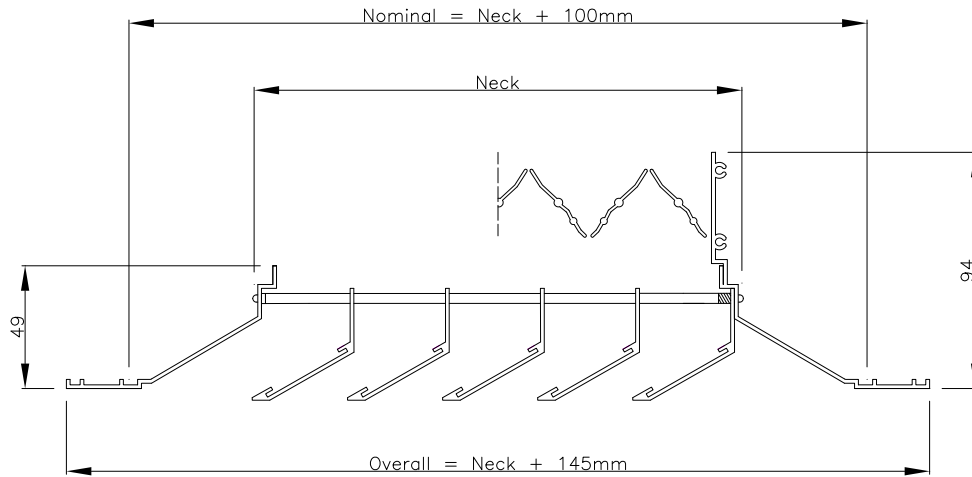
## Quality assurance

HVC Supplies (Stourbridge) Ltd is an ISO 9001 certified company.



Assessed to ISO 9001  
Cert/Ref No. 1186

## Technical drawings

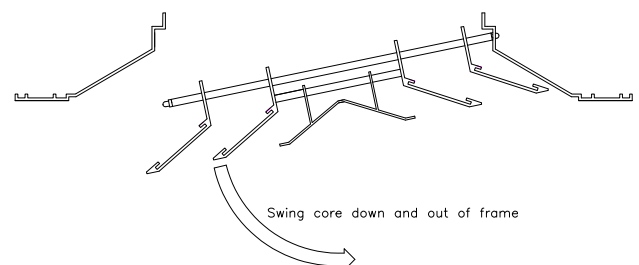
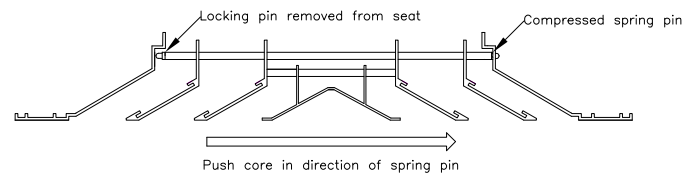


## Removable cores

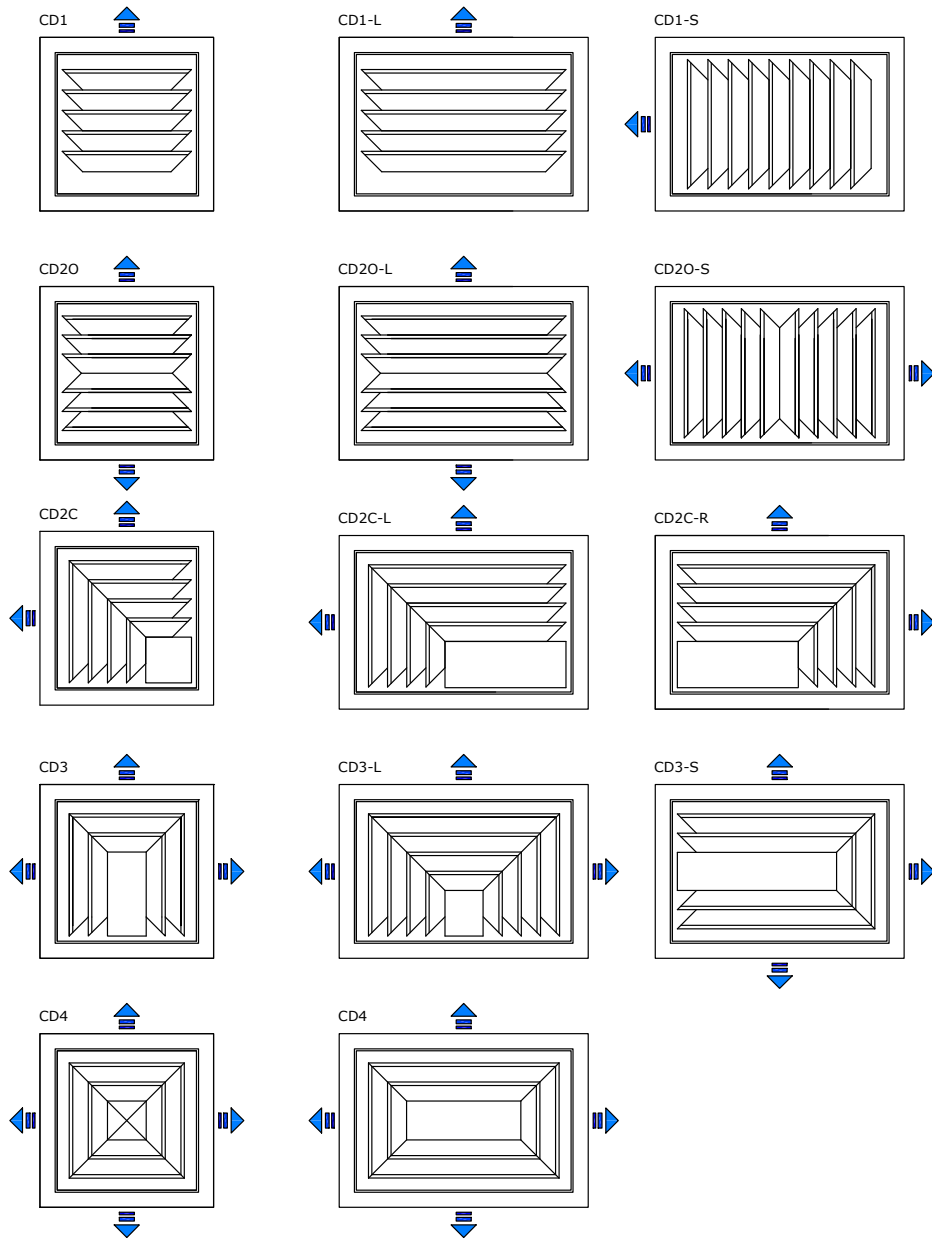
Series CD louvre faced diffusers are equipped with removable cores where the size in either dimension does not exceed 1195 x 595 O/A (1050 x 450 neck). Cores are removable by pushing the core to one side to compress spring pins.

Above this size, cores will be fixed into the outer frame for safety.

All removable cores are equipped with safety wire to prevent the core being able to fall away from the outer frame entirely.



## Core formats



## Stocked sizes

The following sizes of Series CD4 louvre faced diffusers are held in stock, with and without fitted opposed blade dampers, and in RAL9010 finish, available for immediate despatch.

- 150mm<sup>2</sup>
- 200mm<sup>2</sup>
- 225mm<sup>2</sup>
- 250mm<sup>2</sup>
- 300mm<sup>2</sup>
- 350mm<sup>2</sup> (495mm<sup>2</sup> overall face size tile replacer)
- 375mm<sup>2</sup>
- 450mm<sup>2</sup> (595mm<sup>2</sup> overall face size tile replacer)

All sizes are neck unless stated.

**Product codes:** CD4 - RAL9010  
(diffuser only)

CD4 - D - RAL9010  
(diffuser complete with fitted opposed blade damper)

## Options

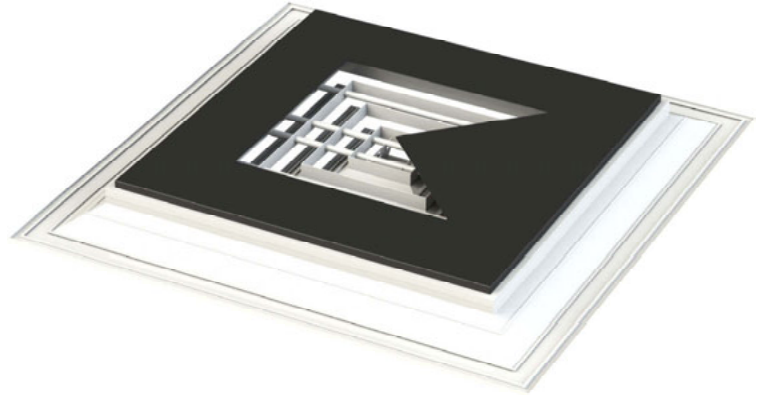
### Neck reducer / blanking plates

Neck reducer / blanking plates are required when the necessary size and design of a unit does not match the required performance.

#### For example:

An installation demands the use of tile replacer (595mm x 595mm overall) size CD4 diffusers, but the actual required performance is closer to that of a 250mm x 250mm CD3 (3 way blow).

A blanking plate as shown here will be manufactured to the required size and pattern and will be factory fitted to the rear of the diffuser, giving both the required appearance and performance.



## Fixings

### Countersunk face fixing holes - FH

5.7mm countersunk fixing holes will be punched into the diffuser frame before powder coating, allowing quick and easy fitting on site.

Number and layout of fixing holes will be appropriate to diffuser size. Arrangements can be specified.

Supplied with pozidrive self tapping screws in the same finish as the diffuser.



### Burgess tile - BT

The diffuser will be factory fitted into a burgess tile.

Fitting involves clipping the tile into place in a prefitted burgess clip system.

CD diffusers can be fitted into other ceiling tile systems. Please contact us for more information and to discuss your requirements.



## Selection data - CD1 and CD1-S

CD1							
SIZE(w x h)	AK m sq.	NECK VELOCITY m/s	1.5	2	2.5	3	3.5
		<b>Total Pd mm w.g.</b>	<b>0.9</b>	<b>1.5</b>	<b>2.3</b>	<b>3.3</b>	<b>4.3</b>
<b>150 x 150</b>	0.0097	m cub/sec	0.0361	0.0472	0.0597	0.0708	0.0833
		Throw min-max (m)	0.9 - 2.4	1.2 - 2.8	1.5 - 3.0	2.2 - 3.4	2.5 - 3.7
		Noise (dB)			20	24	28
<b>225 x 225</b>	0.0219	m cub/sec	0.0805	0.1069	0.1319	0.1611	0.1861
		Throw min-max (m)	1.5 - 3.7	2.1 - 4.3	2.4 - 4.6	3.1 - 5.2	3.7 - 5.5
		Noise (dB)		20	25	29	32
<b>300 x 300</b>	0.039	m cub/sec	0.1416	0.1888	0.2361	0.2833	0.3305
		Throw min-max (m)	2.2 - 4.9	2.8 - 5.5	3.4 - 6.4	4.0 - 6.7	4.6 - 7.3
		Noise (dB)		23	28	32	35
<b>375 x 375</b>	0.0609	m cub/sec	0.2222	0.2958	0.368	0.4444	0.5166
		Throw min-max (m)	2.5 - 6.1	3.4 - 7.0	4.3 - 8.0	4.9 - 8.6	5.8 - 9.2
		Noise (dB)		25	30	34	37

CD1-S							
SIZE(w x h)	AK m sq.	NECK VELOCITY m/s	1.5	2	2.5	3	3.5
		<b>Total Pd mm w.g.</b>	<b>0.9</b>	<b>1.5</b>	<b>2.3</b>	<b>3.3</b>	<b>4.3</b>
<b>225 x 150</b>	0.0147	m cub./sec.	0.0541	0.0708	0.0902	0.1069	0.125
		Throw min-max (m)	1.8 - 4.3	2.4 - 4.9	3.0 - 5.5	3.3 - 5.8	3.9 - 6.4
		Noise (dB)			23	27	30
<b>300 x 225</b>	0.0292	m cub./sec.	0.1083	0.1416	0.1791	0.2125	0.25
		Throw min-max (m)	2.4 - 5.8	3.3 - 6.7	3.9 - 7.6	4.9 - 8.6	5.8 - 9.2
		Noise (dB)		22	27	30	34
<b>375 x 300</b>	0.0487	m cub/sec	0.1777	0.2361	0.2958	0.3541	0.4138
		Throw min-max (m)	3.1 - 7.6	4.3 - 8.8	5.2 - 9.8	6.4 - 10.9	7.3 - 11.6
		Noise (dB)		24	29	33	36

## Selection data - CD1-L

CD1-L							
SIZE(w x h)	AK m sq.	NECK VELOCITY m/s	1.5	2	2.5	3	3.5
		<b>Total Pd mm wg</b>	<b>0.9</b>	<b>1.5</b>	<b>2.3</b>	<b>3.3</b>	<b>4.3</b>
<b>225 x 150</b>	0.0147	m cub/sec	0.0541	0.0708	0.0902	0.1069	0.125
		Throw min-max (m)	1.8 - 4.3	2.4 - 4.9	3.0 - 5.5	3.3 - 5.8	4.0 - 6.4
		Noise (dB)			23	27	30
<b>300 x 150</b>	0.0195	m cub/sec	0.0708	0.0944	0.118	0.1416	0.1652
		Throw min-max (m)	2.2 - 4.9	2.8 - 5.5	3.4 - 6.4	4.0 - 6.7	4.6 - 7.3
		Noise (dB)			24	28	32
<b>375 x 150</b>	0.0244	m cub/sec	0.0902	0.118	0.1486	0.1777	0.2083
		Throw min-max (m)	2.2 - 5.5	3.0 - 6.4	3.7 - 7.0	4.6 - 7.6	5.2 - 8.3
		Noise (dB)		20	26	29	33
<b>450 x 150</b>	0.0292	m cub/sec	0.1083	0.1416	0.1791	0.2125	0.25
		Throw min-max (m)	2.5 - 5.8	3.4 - 6.7	4.0 - 7.6	4.9 - 8.6	5.8 - 9.2
		Noise (dB)		22	27	30	34
<b>300 x 225</b>	<b>0.0292</b>	<b>m cub/sec</b>	0.1083	0.1416	0.1791	0.2125	0.25
		<b>Throw min-max (m)</b>	2.5 - 5.8	3.4 - 6.7	4.0 - 7.6	4.9 - 8.6	5.8 - 9.2
		<b>Noise (dB)</b>		22	27	30	34
<b>375 x 225</b>	<b>0.0367</b>	<b>m cub/sec</b>	0.1319	0.1763	0.2222	0.2666	0.3125
		<b>Throw min-max (m)</b>	2.8 - 6.7	3.7 - 7.6	4.6 - 8.6	5.5 - 9.5	6.4 - 10.0
		<b>Noise (dB)</b>		22	27	32	35
<b>525 x 225</b>	<b>0.0511</b>	<b>m cub/sec</b>	0.1861	0.2486	0.3097	0.3708	0.4319
		<b>Throw min-max (m)</b>	3.4 - 8.0	4.3 - 9.2	5.5 - 10.0	6.4 - 11.0	7.7 - 11.9
		<b>Noise (dB)</b>		24	29	33	37
<b>375 x 300</b>	<b>0.0487</b>	<b>m cub/sec</b>	0.1777	0.2361	0.2958	0.3541	0.4138
		<b>Throw min-max (m)</b>	3.1 - 7.6	4.3 - 8.9	5.2 - 9.8	6.4 - 11.0	7.3 - 11.6
		<b>Noise (dB)</b>		24	29	33	36
<b>450 x 300</b>	<b>0.0585</b>	<b>m cub/sec</b>	0.2125	0.2833	0.3541	0.425	0.4958
		<b>Throw min-max (m)</b>	3.4 - 8.6	4.6 - 9.8	5.8 - 11.0	7.1 - 11.9	8.0 - 12.8
		<b>Noise (dB)</b>		25	30	33	37
<b>525 x 300</b>	<b>0.0683</b>	<b>m cub/sec</b>	0.2486	0.3305	0.4138	0.4958	0.5791
		<b>Throw min-max (m)</b>	3.7 - 9.2	4.9 - 10.4	6.1 - 11.6	7.4 - 12.8	8.9 - 13.7
		<b>Noise (dB)</b>	20	26	30	34	37

## Selection data - CD20 and CD20-S

CD20							
SIZE	AK m sq.	NECK VELOCITYm/s	1.5	2	2.5	3	3.5
		Total Pd mm wg	0.9	1.5	2.3	3.3	4.3
150 x 150	0.0097	m cub/sec	0.0361	0.0472	0.0597	0.0708	0.0833
		Throw min-max (m)	0.9 - 2.4	1.2 - 2.8	1.5 - 3.0	2.2 - 3.4	2.5 - 3.7
		Noise (dB)			20	24	28
225 x 225	0.0219	m cub/sec	0.0805	0.1069	0.1319	0.1611	0.1861
		Throw min-max (m)	1.5 - 3.7	2.1 - 4.3	2.4 - 4.6	3.1 - 5.2	3.7 - 5.5
		Noise (dB)		20	25	29	32
300 x 300	0.039	m cub/sec	0.1416	0.1888	0.2361	0.2833	0.3305
		Throw min-max (m)	2.2 - 4.9	2.8 - 5.5	3.4 - 6.4	4.0 - 6.7	4.6 - 7.3
		Noise (dB)		23	28	32	35
375 x 375	0.0609	m cub/sec	0.2222	0.2958	0.368	0.4444	0.5166
		Throw min-max (m)	2.5 - 6.1	3.4 - 7.0	4.3 - 8.0	4.9 - 8.6	5.8 - 9.2
		Noise (dB)		25	30	34	37
450 x 450	0.0878	m cub./sec.	0.3194	0.425	0.5319	0.6375	0.7444
		Throw min-max (m)	3.1 - 7.3	4.0 - 8.6	4.9 - 9.5	6.1	7.1 - 11.0
		Noise (dB)	21	27	32	35	39
525 x 525	0.12	m cub./sec.	0.4347	0.5791	0.7222	0.8694	1.0138
		Throw min-max (m)	3.4 - 8.6	4.6 - 9.8	5.8 - 11.0	7.1 - 11.9	8.3 - 12.8
		Noise (dB)	22	28	34	37	41

CD20-S							
SIZE	AK m sq.	NECK VELOCITYm/s	1.5	2	2.5	3	3.5
		Total Pd mm wg	0.9	1.5	2.3	3.3	4.3
225 x 150	0.0097	m cub/sec	0.0361	0.0472	0.0597	0.0708	0.0833
		Throw min-max (m)	0.9 - 2.4	1.2 - 2.8	1.5 - 3.0	2.2 - 3.4	2.5 - 3.7
		Noise (dB)			20	24	28
300 x 150	0.0195	m cub/sec	0.0708	0.0944	0.118	0.1416	0.1652
		Throw min-max (m)	1.5 - 4.3	1.8 - 4.0	2.4 - 4.3	2.7 - 4.9	3.3 - 5.2
		Noise (dB)			24	28	32
300 x 225	0.0292	m cub/sec	0.1083	0.1416	0.1791	0.2125	0.25
		Throw min-max (m)	1.8 - 4.3	2.4 - 4.9	3.0 - 5.5	3.3 - 5.8	3.9 - 6.4
		Noise (dB)		22	27	30	34
375 x 225	0.0367	m cub/sec	0.1319	0.1777	0.2222	0.2666	0.3125
		Throw min-max (m)	1.8 - 4.6	2.4 - 5.5	3.3 - 6.1	3.9 - 6.7	4.5 - 7.3
		Noise (dB)		22	27	32	35
375 x 300	0.0487	m cub./sec.	0.1777	0.2361	0.2958	0.3541	0.4138
		Throw min-max (m)	2.8 - 5.5	3.2 - 6.4	4.0 - 7.0	4.6 - 8.0	5.2 - 8.6
		Noise (dB)		24	29	33	36



## Selection data - CD20-L

CD20-L							
SIZE	AK m sq.	NECK VELOCITY m/s	1.5	2	2.5	3	3.5
		Total Pd mm wg	0.9	1.5	2.3	3.3	4.3
225 x 150	0.0147	m cub/sec	0.0541	0.0708	0.0902	0.1069	0.125
		Throw min-max (m)	1.2 - 3.1	1.5 - 3.4	2.1 - 4.0	2.4 - 4.2	2.7 - 4.6
		Noise (dB)			23	27	30
300 x 150	0.0195	m cub/sec	0.0708	0.0944	0.118	0.1416	0.1652
		Throw min-max (m)	1.5 - 3.4	1.8 - 4.0	2.4 - 4.3	2.7 - 4.9	3.3 - 5.2
		Noise (dB)			24	28	32
375 x 150	0.0244	m cub/sec	0.0902	0.118	0.1486	0.1777	0.2083
		Throw min-max (m)	1.5 - 4.3	2.1 - 4.9	2.7 - 5.2	3.0 - 5.8	3.6 - 6.4
		Noise (dB)		20	26	29	33
450 x 150	0.0292	m cub/sec	0.1083	0.1416	0.1791	0.2125	0.25
		Throw min-max (m)	1.8 - 4.3	2.4 - 4.9	3.0 - 5.5	3.3 - 5.8	4.0 - 6.4
		Noise (dB)		22	27	30	34
300 x 225	0.0292	m cub./sec.	0.1083	0.1416	0.1791	0.2125	0.25
		Throw min-max (m)	1.8 - 4.3	2.4 - 4.9	3.0 - 5.5	3.3 - 5.8	4.0 - 6.4
		Noise (dB)		22	27	30	34
375 x 225	0.0367	m cub./sec.	0.1319	0.1763	0.2222	0.2666	0.3125
		Throw min-max (m)	1.8 - 4.6	2.4 - 5.5	3.4 - 6.1	4.0 - 6.7	4.6 - 7.4
		Noise (dB)		22	27	32	35
525 x 225	0.0511	m cub./sec.	0.1861	0.2486	0.3097	0.3708	0.4319
		Throw min-max (m)	2.8 - 5.5	3.1 - 6.4	4.0 - 7.0	4.6 - 8.0	5.2 - 8.6
		Noise (dB)		24	29	33	37
375 x 300	0.0487	m cub./sec.	0.1777	0.2361	0.2958	0.3541	0.4138
		Throw min-max (m)	2.8 - 5.5	3.1 - 6.4	4.0 - 7.0	4.6 - 8.0	5.2 - 8.6
		Noise (dB)		24	29	33	36
450 x 300	0.0585	m cub./sec.	0.2125	0.2833	0.3541	0.425	0.4958
		Throw min-max (m)	2.5 - 5.8	3.4 - 6.7	4.0 - 7.6	4.9 - 8.6	5.8 - 9.2
		Noise (dB)		25	30	33	37
525 x 300	0.0683	m cub./sec.	0.2486	0.3305	0.4138	0.4958	0.5791
		Throw min-max (m)	2.7 - 6.4	3.7 - 7.3	4.3 - 8.3	5.2 - 9.2	6.1 - 9.8
		Noise (dB)	20	26	30	34	37
450 x 375	0.0732	m cub./sec.	0.2666	0.3451	0.4444	0.5336	0.6208
		Throw min-max (m)	2.8 - 6.7	3.7 - 7.7	4.6 - 8.6	5.5 - 9.5	6.4 - 10.1
		Noise (dB)	20	26	31	35	38

## Selection data - CD2C

CD2C							
SIZE	AK m sq.	NECK VELOCITY m/s	1.5	2	2.5	3	3.5
		Total Pd mm wg	0.9	1.5	2.3	3.3	4.3
150 x 150	0.0097	m cub/sec	0.0361	0.0472	0.0597	0.0708	0.0833
		Throw min-max (m)	0.9 - 2.5	1.2 - 2.8	1.6 - 3.0	2.2 - 3.4	2.5 - 3.7
		Noise (dB)			20	24	28
225 x 225	0.0219	m cub/sec	0.0805	0.1069	0.1319	0.1611	0.1875
		Throw min-max (m)	1.6 - 3.7	2.2 - 4.3	2.5 - 4.6	3.0 - 5.2	3.4 - 5.5
		Noise (dB)		20	25	29	32
300 x 300	0.039	m cub/sec	0.1416	0.1888	0.2361	0.2833	0.3305
		Throw min-max (m)	2.2 - 4.9	2.8 - 5.5	3.4 - 6.4	4.0 - 6.7	4.6 - 7.4
		Noise (dB)		23	28	32	35
375 x 375	0.0609	m cub/sec	0.2222	0.2958	0.3694	0.4444	0.518
		Throw min-max (m)	2.5 - 6.1	3.4 - 7.1	4.3 - 8.0	4.9 - 8.6	5.8 - 9.2
		Noise (dB)		25	30	34	37
450 x 450	0.0878	m cub./sec.	0.3194	0.425	0.5319	0.6375	0.7444
		Throw min-max (m)	3.1 - 7.4	4.0 - 8.6	4.9 - 9.5	6.1 - 10.4	7.1 - 11.0
		Noise (dB)	21	27	32	35	39

## Selection data - CD2C-L and CD2C-R

CD2C-L / CD2C-R							
SIZE	AK m sq.	NECK VELOCITY m/s	1.5	2	2.5	3	3.5
		Total Pd mm wg	<b>0.9</b>	<b>1.5</b>	<b>2.3</b>	<b>3.3</b>	<b>4.3</b>
<b>225 x 150</b>	<b>0.0147</b>	m cub./sec.	0.0541	0.0708	0.0902	0.1069	0.125
		Throw min-max (m) Shorter side	0.9 - 2.5	1.3 - 2.8	1.9 - 3.1	2.2 - 3.4	2.5 - 3.7
		Throw min-max (m) Longer side	1.6 - 3.4	1.9 - 4.0	2.5 - 4.3	2.8 - 4.9	3.4
		Noise (dB)			23	27	30
<b>300 x 150</b>	<b>0.0195</b>	m cub./sec.	0.0708	0.0944	0.118	0.1416	0.1652
		Throw min-max (m) Shorter side	0.9 - 2.5	1.3 - 2.8	1.9 - 3.1	2.2 - 3.4	2.5 - 3.7
		Throw min-max (m) Longer side	1.9 - 4.3	2.5 - 4.9	2.8 - 5.5	3.4 - 5.8	4.0 - 6.4
		Noise (dB)			24	28	32
<b>375 x 150</b>	<b>0.0244</b>	m cub./sec.	0.0902	0.118	0.1486	0.1777	0.2083
		Throw min-max (m) Shorter side	0.9 - 2.5	1.3 - 2.8	1.9 - 3.1	2.2 - 3.4	2.5 - 3.7
		Throw min-max (m) Longer side	2.2 - 4.9	2.8 - 5.5	3.4 - 6.4	4.0 - 6.7	4.6 - 7.4
		Noise (dB)		20	26	29	33
<b>300 x 225</b>	<b>0.0292</b>	m cub./sec.	0.1083	0.1416	0.1791	0.2125	0.25
		Throw min-max (m) Shorter side	1.6 - 3.7	1.9 - 4.3	2.5 - 4.6	3.1 - 5.2	3.4 - 5.5
		Throw min-max (m) Longer side	2.2 - 4.6	2.8 - 5.5	3.4 - 6.1	4.0 - 6.7	4.6 - 7.3
		Noise (dB)		22	27	30	34
<b>375 x 225</b>	<b>0.0367</b>	m cub./sec.	0.1319	0.1777	0.2222	0.2666	0.3125
		Throw min-max (m) Shorter side	1.6 - 3.7	1.9 - 4.3	2.5 - 4.6	3.1 - 5.2	3.4 - 5.5
		Throw min-max (m) Longer side	2.2 - 5.5	3.1 - 6.4	3.7 - 7.0	4.6 - 8.0	5.5 - 8.6
		Noise (dB)		22	27	32	35
<b>375 x 300</b>	<b>0.0487</b>	m cub./sec.	0.1777	0.2361	0.2958	0.3541	0.4138
		Throw min-max (m) Shorter side	2.2 - 4.9	2.8 - 5.5	3.4 - 6.4	4.0 - 6.7	4.6 - 7.4
		Throw min-max (m) Longer side	2.5 - 5.8	3.4 - 6.7	4.0 - 7.6	4.9 - 8.6	5.8 - 9.2
		Noise (dB)		24	29	33	36
<b>450 x 300</b>	<b>0.0585</b>	m cub./sec.	0.2125	0.2833	0.3541	0.425	0.4958
		Throw min-max (m) Shorter side	2.2 - 4.9	2.8 - 5.5	3.4 - 6.4	4.0 - 6.7	4.6 - 7.3
		Throw min-max (m) Longer side	2.8 - 6.7	3.7 - 8.0	4.6 - 8.9	5.8 - 9.8	6.7 - 10.4
		Noise (dB)		25	30	33	37
<b>450 x 375</b>	<b>0.0732</b>	m cub./sec.	0.2666	0.3451	0.4444	0.5333	0.6208
		Throw min-max (m) Shorter side	2.5 - 6.1	3.4 - 7.0	4.3 - 8.0	4.9 - 8.6	5.8 - 9.2
		Throw min-max (m) Longer side	3.1 - 7.0	4.0 - 8.3	4.9 - 9.2	5.8 - 10.1	7.0 - 11.0
		Noise (dB)	20	26	31	35	38

## Selection data - CD3 and CD3-S

CD3							
SIZE	AK m sq.	NECK VELOCITY m/s	1.5	2	2.5	3	3.5
		Total Pd mm wg	0.9	1.5	2.3	3.3	4.3
150 x 150	0.0097	m cub/sec	0.0361	0.0472	0.0597	0.0708	0.0833
		Throw min-max (m)	0.7 - 1.6	0.9 - 1.9	1.3 - 2.2	1.6 - 2.5	1.6 - 2.8
		Noise (dB)					19
225 x 225	0.0219	m cub/sec	0.0805	0.1069	0.1319	0.1611	0.1861
		Throw min-max (m)	1.3 - 2.5	1.6 - 3.1	1.9 - 3.4	2.2 - 3.7	2.5 - 4.0
		Noise (dB)				23	27
300 x 300	0.039	m cub/sec	0.1416	0.1888	0.2361	0.2833	0.3305
		Throw min-max (m)	1.6 - 3.4	1.9 - 4.0	2.5 - 4.3	2.9 - 4.9	3.4 - 5.2
		Noise (dB)		20	25	29	32
375 x 375	0.0609	m cub/sec	0.2222	0.2958	0.368	0.4444	0.5166
		Throw min-max (m)	1.9 - 4.3	2.2 - 4.9	3.1 - 5.5	3.7 - 6.1	4.3 - 6.4
		Noise (dB)		24	29	33	37
450 x 450	0.0878	m cub./sec.	0.3194	0.425	0.5319	0.6375	0.7444
		Throw min-max (m)	2.2 - 5.2	2.8 - 5.8	3.7 - 6.7	4.3 - 7.4	4.9 - 8.0
		Noise (dB)	22	28	33	36	40
525 x 525	0.12	m cub./sec.	0.4347	0.5791	0.7222	0.8694	1.0138
		Throw min-max (m)	2.5 - 6.1	3.4 - 7.1	4.3 - 7.7	4.9 - 8.6	5.8 - 9.2
		Noise (dB)	25	31	36	39	43
600 x 600	0.156	m cub./sec.	0.5666	0.7555	0.9444	11.333	13.222
		Throw min-max (m)	2.8 - .7	4.0 - 8.0	4.6 - 4.9	5.8 - 9.8	6.7 - 10.4
		Noise (dB)	27	33	38	43	46

CD3-S							
SIZE	AK m sq.	NECK VELOCITY m/s	1.5	2	2.5	3	3.5
		Total Pd mm wg	0.9	1.5	2.3	3.3	4.3
225 x 150	0.0147	m cub/sec	0.0541	0.0708	0.0902	0.1069	0.125
		Throw min-max (m) -Front	1.2 - 2.5	1.9 - 4.0	1.9 - 3.4	2.2 - 3.7	3.4 - 5.2
		Throw min-max (m) -Sides	0.9 - 2.5	1.3 - 2.8	1.6 - 3.1	1.9 - 3.4	2.2 - 3.7
		Noise (dB)			23	27	30
300 x 150	0.0195	m cub/sec	0.0708	0.0944	0.118	0.1416	0.1652
		Throw min-max (m) -Front	1.6 - 6.4	1.9 - 4.0	2.5 - 4.3	2.8 - 4.9	3.4 - 5.2
		Throw min-max (H6m) -Sides	0.9 - 2.5	1.3 - 2.8	1.6 - 3.1	1.9 - 3.4	2.2 - 3.7
		Noise (dB)			24	28	32
375 x 150	0.0244	m cub/sec	0.0902	0.118	0.1486	0.1777	0.2083
		Throw min-max (m) -Front	1.9 - 4.3	2.5 - 4.9	3.1 - 5.5	3.4 - 5.8	4.0 - 6.4
		Throw min-max (m) -Sides	0.9 - 2.5	1.3 - 2.8	1.9 - 3.1	1.9 - 3.4	2.2 - 3.7
		Noise (dB)		20	26	29	33

## Selection data - CD3-S continued

CD3-S							
SIZE	AK m sq.	NECK VELOCITY m/s	1.5	2	2.5	3	3.5
		Total Pd mm wg	0.9	1.5	2.3	3.3	4.3
<b>450 x 150</b>	<b>0.0292</b>	m cub/sec	0.1083	0.1416	0.1791	0.2125	0.25
		Throw min-max (m) -Front	2.2 - 4.9	2.8 - 5.5	3.4 - 6.4	4.0 - 6.7	4.6 - 7.3
		Throw min-max (m) -Sides	0.9 - 2.5	1.3 - 2.8	1.9 - 3.1	1.9 - 3.4	2.2 - 3.7
		Noise (dB)		22	27	30	34
<b>300 x 225</b>	<b>0.0292</b>	m cub/sec	0.1083	0.1416	0.1791	0.2125	0.25
		Throw min-max (m) -Front	16 - 3.4	1.9 - 4.0	2.5 - 4.3	2.8 - 4.9	3.4 - 5.2
		Throw min-max (m) -Sides	1.6 - 3.4	1.9 - 4.0	2.5 - 4.3	2.8 - 4.9	3.4 - 5.2
		Noise (dB)		22	27	30	34
<b>375 x 225</b>	<b>0.0367</b>	m cub/sec	0.1319	0.1777	0.2222	0.2666	0.3125
		Throw min-max (m) -Front	1.9 - 4.3	2.5 - 4.9	3.1 - 5.5	3.7 - 6.1	4.3 - 6.4
		Throw min-max (m) -Sides	1.6 - 3.7	1.9 - 4.3	2.5 - 4.6	3.1 - 5.2	3.4 - 5.5
		Noise (dB)		22	27	32	35
<b>525 x 225</b>	<b>0.0511</b>	m cub/sec	0.1861	0.2486	0.3097	0.3708	0.4319
		Throw min-max (m) -Front	2.5 - 5.8	3.4 - 6.7	4.0 - 7.7	4.9 - 8.6	5.8 - 6.1
		Throw min-max (m) -Sides	1.6 - 3.7	2.2 - 4.3	2.5 - 4.6	3.1 - 5.2	3.4 - 5.5
		Noise (dB)		24	29	33	37
<b>375 x 300</b>	<b>0.0487</b>	m cub/sec	0.1777	0.2361	0.2958	0.3541	0.4138
		Throw min-max (m) -Front	1.9 - 4.3	2.5 - 4.9	3.1 - 5.5	3.7 - 6.1	4.3 - 6.4
		Throw min-max (m) -Sides	1.9 - 3.4	2.5 - 4.0	3.1 - 4.6	3.7 - 4.9	4.3 - 5.2
		Noise (dB)		24	29	33	36
<b>450 x 300</b>	<b>0.0585</b>	m cub/sec	0.2125	0.2833	0.3541	0.425	0.4958
		Throw min-max (m) -Front	2.2 - 5.2	2.8 - 5.8	3.7 - 6.7	4.3 - 7.3	4.9 - 8.0
		Throw min-max (m) -Sides	1.9 - 4.6	2.5 - 5.5	3.4 - 6.1	4.0 - 6.7	4.6 - 7.4
		Noise (dB)		25	30	33	37
<b>450 x 375</b>	<b>0.0732</b>	m cub/sec	0.2666	0.3541	0.4444	0.5333	0.6208
		Throw min-max (m) -Front	2.5 - 5.5	3.1 - 6.4	4.0 - 7.1	4.6 - 8.0	5.5 - 8.6
		Throw min-max (m) -Sides	2.2 - 5.2	2.8 - 5.8	3.7 - 6.7	4.3 - 7.3	4.9 - 8.0
		Noise (dB)	20	26	31	35	38
<b>525 x 450</b>	<b>0.102</b>	m cub/sec	0.3736	0.4958	0.6208	0.7458	0.8694
		Throw min-max (m) -Front	2.8 - 6.7	3.7 - 7.7	4.6 - 8.6	5.5 - 9.5	6.4 - 10.1
		Throw min-max (m) -Sides	2.5 - 6.1	3.4 - 7.1	4.3 - 7.7	4.9 - 8.6	5.8 - 9.2
		Noise (dB)	22	28	34	37	40

## Selection data - CD3-L

CD3-L							
SIZE	AK m sq.	NECK VELOCITY m/s	1.5	2	2.5	3	3.5
		Total Pd mm wg	0.9	1.5	2.3	3.3	4.3
225 x 150	0.0147	m cub/sec	0.0541	0.0708	0.0902	0.1069	0.125
		Throw min-max (m) -Front	0.7 - 1.9	0.9 - 1.9	1.9 - 3.4	2.2 - 4.0	2.8 - 4.3
		Throw min-max (m) -Sides	1.3 - 2.8	1.6 - 3.1	1.9 - 3.4	2.2 - 4.0	2.8 - 4.3
		Noise (dB)			23	27	30
300 x 150	0.0195	m cub/sec	0.0708	0.0944	0.118	0.1486	0.1652
		Throw min-max (m) -Front	0.7 - 1.9	0.9 - 1.9	1.3 - 2.2	1.6 - 2.5	1.6 - 2.8
		Throw min-max (m) -Sides	1.3 - 3.4	1.9 - 3.7	2.2 - 4.3	2.8 - 4.6	3.2 - 4.9
		Noise (dB)			24	28	32
375 x 150	0.0244	m cub/sec	0.0902	0.118	0.1486	0.1777	0.2083
		Throw min-max (m) -Front	0.6 - 1.9	0.9 - 1.9	1.3 - 2.2	1.6 - 2.5	1.6 - 2.8
		Throw min-max (m) -Sides	1.6 - 3.7	2.2 - 4.3	2.5 - 4.6	3.1 - 5.2	3.7 - 5.5
		Noise (dB)		20	26	29	33
300 x 225	0.0292	m cub/sec	0.1083	0.1416	0.1791	0.2125	0.25
		Throw min-max (m) -Front	0.9 - 2.5	1.6 - 3.1	1.9 - 3.4	2.2 - 3.7	2.5 - 4.0
		Throw min-max (m) -Sides	1.6 - 3.7	2.2 - 4.3	2.8 - 4.9	3.1 - 5.5	3.7 - 5.8
		Noise (dB)		22	27	30	34
375 x 225	0.0367	m cub/sec	0.1319	0.1777	0.2222	0.2666	0.3125
		Throw min-max (m) -Front	0.9 - 2.5	1.6 - 3.1	1.9 - 3.4	2.2 - 3.7	
		Throw min-max (m) -Sides	1.9 - 4.3	2.5 - 4.9	3.1 - 5.5	3.6 - 6.1	4.3 - 6.7
		Noise (dB)		22	27	32	35
525 x 225	0.0511	m cub/sec	0.1861	0.2486	0.3097	0.3708	0.4319
		Throw min-max (m) -Front	1.3 - 2.5	1.6 - 3.1	1.9 - 3.4	2.3 - 3.7	2.5 - 4.0
		Throw min-max (m) -Sides	2.2 - 5.2	2.8 - 6.1	3.7 - 6.7	4.3 - 7.4	5.2 - 8.0
		Noise (dB)		24	29	33	37
375 x 300	0.0487	m cub/sec	0.1777	0.2361	0.2958	0.3541	0.4138
		Throw min-max (m) -Front	1.6 - 3.4	1.9 - 4.0	2.5 - 4.3	2.8 - 4.9	3.4 - 5.2
		Throw min-max (m) -Sides	2.2 - 4.9	2.8 - 5.8	3.4 - 6.4	4.0 - 6.7	4.6 - 7.4
		Noise (dB)					
450 x 300	0.0585	m cub/sec	0.2125	0.2833	0.3541	0.425	0.4958
		Throw min-max (m) -Front	1.6 - 3.4	1.9 - 4.0	2.5 - 4.3	2.8 - 4.9	3.4 - 5.2
		Throw min-max (m) -Sides	2.2 - 5.5	3.1 - 6.4	3.7 - 7.1	4.6 - 8.0	5.2 - 8.3
		Noise (dB)		25	30	33	37
450 x 375	0.0732	m cub/sec	0.2666	0.3541	0.4444	0.5333	0.6208
		Throw min-max (m) -Front	1.9 - 4.3	2.5 - 4.9	3.1 - 5.5	3.7 - 6.1	4.3 - 6.4
		Throw min-max (m) -Sides	2.5 - 5.8	3.4 - 6.7	4.0 - 7.7	4.9 - 8.3	5.8 - 9.2
		Noise (dB)	20	26	31	35	38
525 x 450	0.102	m cub/sec	0.3736	0.4958	0.6208	0.7458	0.8694
		Throw min-max (m) -Front	2.2 - 5.2	2.8 - 5.8	3.7 - 6.7	4.3 - 7.4	4.9 - 8.0
		Throw min-max (m) -Sides	2.8 - 7.1	4.0 - 8.0	4.9 - 8.9	5.8 - 9.8	6.7 - 10.7
		Noise (dB)	22	28	32	37	40

## Selection data - CD4

CD4 - Square sizes							
SIZE	AK m sq.	NECK VELOCITY m/s	1.5	2	2.5	3	3.5
		Total Pd mm wg	0.9	1.5	2.3	3.3	4.3
150 x 150	0.0097	m cub/sec	0.0361	0.0472	0.0597	0.0708	0.0833
		Throw min-max (m)	0.7 - 1.6	0.9 - 1.9	1.3 - 2.2	1.6 - 2.5	1.6 - 2.8
		Noise (dB)					19
225 x 225	0.0219	m cub/sec	0.0805	0.1069	0.1319	0.1611	0.1861
		Throw min-max (m)	1.3 - 2.5	1.6 - 3.1	1.9 - 3.4	2.2 - 3.7	2.5 - 4.0
		Noise (dB)				23	27
300 x 300	0.039	m cub/sec	0.1416	0.1888	0.2361	0.2833	0.3305
		Throw min-max (m)	1.6 - 3.4	1.9 - 4.0	2.5 - 4.3	2.9 - 4.9	3.4 - 5.2
		Noise (dB)		20	25	29	32
375 x 375	0.0609	m cub/sec	0.2222	0.2958	0.368	0.4444	0.5166
		Throw min-max (m)	1.9 - 4.3	2.2 - 4.9	3.1 - 5.5	3.7 - 6.1	4.3 - 6.4
		Noise (dB)		24	29	33	37
450 x 450	0.0878	m cub./sec.	0.3194	0.425	0.5319	0.6375	0.7444
		Throw min-max (m)	2.2 - 5.2	2.8 - 5.8	3.7 - 6.7	4.3 - 7.4	4.9 - 8.0
		Noise (dB)	22	28	33	36	40
525 x 525	0.12	m cub./sec.	0.4347	0.5791	0.7222	0.8694	1.0138
		Throw min-max (m)	2.5 - 6.1	3.4 - 7.1	4.3 - 7.7	4.9 - 8.6	5.8 - 9.2
		Noise (dB)	25	31	36	39	43
600 x 600	0.156	m cub./sec.	0.5666	0.7555	0.9444	1.1333	1.3222
		Throw min-max (m)	2.8 - 6.7	4.0 - 8.0	4.6 - 8.9	5.8 - 9.8	6.7 - 10.4
		Noise (dB)	27	33	38	43	46

## Selection data - CD4 continued

CD4							
SIZE	AK m sq.	NECK VELOCITY m/s	1.5	2	2.5	3	3.5
		Total Pd mm wg	0.9	1.5	2.3	3.3	4.3
225 x 600	0.0367	m cub/sec	0.0541	0.0708	0.0902	0.1069	0.125
		Throw min-max (m) Shorter side	0.6 - 1.9	0.9 - 1.9	1.3 - 2.2	1.6 - 2.5	1.6 - 2.8
		Throw min-max (m) Longer side	0.9 - 2.5	1.3 - 2.8	1.3 - 2.8	2.2 - 3.4	2.5 - 3.7
		Noise (dB)					23
300 x 150	0.0195	m cub/sec	0.0708	0.0944	0.118	0.1416	0.1652
		Throw min-max (m) Shorter side	0.6 - 1.9	0.9 - 1.9	1.3 - 2.2	1.6 - 2.5	1.6 - 2.8
		Throw min-max (m) Longer side	1.3 - 3.1	1.6 - 3.4	2.2	2.5 - 4.3	3.1 - 4.6
		Noise (dB)				23	27
375 x 150	0.0244	m cub/sec	0.0902	0.118	0.1486	0.1777	0.2083
		Throw min-max (m) Shorter side	0.6 - 1.9	0.9 - 1.9	1.3 - 2.2	1.6 - 2.5	1.6 - 2.8
		Throw min-max (m) Longer side	1.6 - 3.4	1.9 - 4.0	2.5 - 4.3	2.8 - 4.9	3.4 - 5.2
		Noise (dB)			20	24	28
450 x 150	0.0292	m cub/sec	0.1083	0.1416	0.1791	0.2125	0.25
		Throw min-max (m) Shorter side	0.6 - 1.9	0.9 - 1.9	1.3 - 2.2	1.6 - 2.5	1.6 - 2.8
		Throw min-max (m) Longer side	1.6 - 4.0	2.2 - 4.6	2.8 - 4.9	3.1 - 5.5	3.7 - 5.8
		Noise (dB)			22	26	30
300 x 225	0.0292	m cub/sec	0.1083	0.1416	0.1791	0.2125	0.25
		Throw min-max (m) Shorter side	0.9 - 2.5	1.6 - 3.1	1.9 - 3.4	2.2 - 3.7	2.5 - 4.0
		Throw min-max (m) Longer side	1.6 - 3.4	1.9 - 4.0	2.5 - 4.3	2.8 - 4.6	3.1 - 5.2
		Noise (dB)			22	26	30
375 x 225	0.0367	m cub/sec	0.1319	0.1777	0.2222	0.2666	0.3111
		Throw min-max (m) Shorter side	0.9 - 2.5	1.6 - 3.1	1.9 - 3.4	2.2 - 3.7	2.5 - 4.0
		Throw min-max (m) Longer side	1.6 - 4.0	2.2 - 4.6	2.8 - 5.2	3.4 - 5.5	3.7 - 6.1
		Noise (dB)		20	24	28	32
600 x 225	0.0585	m cub/sec	0.2125	0.2833	0.3541	0.425	0.4958
		Throw min-max (m) Shorter side	0.9 - 2.5	1.6 - 3.1	1.9 - 3.4	2.2 - 3.7	2.5 - 4.0
		Throw min-max (m) Longer side	2.2 - 5.5	3.1 - 6.1	3.7 - 7.1	4.3 - 7.7	5.2 - 8.3
		Noise (dB)		24	28	33	33
375 x 300	0.0489	m cub/sec	0.1777	0.2361	0.2958	0.3541	0.4138
		Throw min-max (m) Shorter side	1.6 - 3.4	1.9 - 4.0	2.5 - 4.3	2.8 - 4.9	3.4 - 5.2
		Throw min-max (m) Longer side	1.9 - 4.3	2.5 - 4.9	3.1 - 5.5	3.4 - 5.8	4.0 - 6.1
		Noise (dB)		22	27	31	34



## Selection data - CD4 continued

<b>450 x 300</b>	<b>0.0585</b>	m cub/sec	0.2125	0.2833	0.3541	0.425	0.4958
		Throw min-max (m) Shorter side	1.6 - 3.4	1.9 - 4.0	2.5 - 4.3	2.8 - 4.9	3.4 - 5.2
		Throw min-max (m) Longer side	2.2 - 4.9	2.8 - 5.5	3.4 - 6.4	4.0 - 6.7	4.6 - 7.4
		Noise (dB)		24	28	33	36
<b>525 x 300</b>	<b>0.0683</b>	m cub/sec	0.2486	0.3305	0.4138	0.4958	0.5791
		Throw min-max (m) Shorter side	1.6 - 3.4	1.9 - 4.0	2.5 - 4.3	2.8 - 4.9	3.4 - 5.2
		Throw min-max (m) Longer side	2.2 - 5.5	3.1 - 6.4	6.7 - 7.1	4.6 - 7.7	5.2 - 8.3
		Noise (dB)		25	30	34	37
<b>600 x 300</b>	<b>0.078</b>	m cub/sec	0.2833	0.3777	0.4722	0.5666	0.6611
		Throw min-max (m) Shorter side	1.9 - 3.4	1.9 - 4.0	2.5 - 4.3	2.8 - 4.9	3.4 - 5.2
		Throw min-max (m) Longer side	2.5 - 5.8	3.4 - 6.7	4.0 - 7.7	4.9 - 8.6	5.8 - 9.2
		Noise (dB)	21	27	32	35	38
<b>450 x 375</b>	<b>0.0732</b>	m cub/sec	0.2666	0.3541	0.4444	0.5333	0.6208
		Throw min-max (m) Shorter side	1.9 - 4.3	2.5 - 4.9	3.1 - 5.5	3.7 - 6.1	4.3 - 6.4
		Throw min-max (m) Longer side	2.2 - 5.2	2.8 - 5.8	3.7 - 6.4	4.3 - 7.1	4.9 - 7.7
		Noise (dB)	20	26	31	35	38
<b>525 x 375</b>	<b>0.0854</b>	m cub/sec	0.3097	0.4138	0.5166	0.6208	0.7222
		Throw min-max (m) Shorter side	1.9 - 4.3	2.5 - 4.9	3.1 - 5.5	3.7 - 6.1	4.3 - 6.4
		Throw min-max (m) Longer side	2.5 - 5.8	3.1 - 6.7	4.0 - 7.4	4.9 - 8.3	5.5 - 8.9
		Noise (dB)	21	27	32	36	40
<b>600 x 375</b>	<b>0.0975</b>	m cub/sec	0.3541	0.4722	0.5902	0.7083	0.8263
		Throw min-max (m) Shorter side	1.9 - 4.3	2.5 - 4.9	3.1 - 5.5	3.7 - 6.1	4.3 - 6.4
		Throw min-max (m) Longer side	2.8 - 6.4	3.4 - 7.4	4.3 - 8.3	5.2 - 8.9	6.1 - 9.8
		Noise (dB)	22	29	33	37	41
<b>525 x 450</b>	<b>0.102</b>	m cub/sec	0.3736	0.4958	0.6208	0.7458	0.8694
		Throw min-max (m) Shorter side	2.2 - 5.2	2.8 - 5.8	3.4 - 6.7	4.3 - 7.4	4.9 - 8.0
		Throw min-max (m) Longer side	2.5 - 5.8	3.4 - 6.7	4.0 - 7.7	4.9 - 8.6	5.8 - 9.2
		Noise (dB)	23	29	34	38	41
<b>600 x 450</b>	<b>0.117</b>	m cub/sec	0.425	0.5666	0.7083	0.85	0.9916
		Throw min-max (m) Shorter side	2.2 - 5.2	2.8 - 5.8	3.4 - 6.7	4.3 - 7.4	4.9 - 8.0
		Throw min-max (m) Longer side	2.8 - 6.4	3.7 - 7.7	4.6 - 8.6	5.5 - 9.5	6.4 - 10.1
		Noise (dB)	24	31	36	39	43
<b>600 x 525</b>	<b>0.136</b>	m cub/sec	0.4958	0.6611	0.8263	0.9916	1.1569
		Throw min-max (m) Shorter side	2.5 - 6.1	3.4 - 7.1	4.3 - 7.7	4.9 - 8.6	5.8 - 9.2
		Throw min-max (m) Longer side	2.8 - 6.7	3.7 - 8.0	4.6 - 8.9	5.5 - 9.8	6.4 - 10.4
		Noise (dB)	26	32	37	41	44

## Finish

Mill aluminium

Polyester powder coating to any RAL or BS colour



## Ordering codes

### Example

**1 - 595 x 595 O/A - CD4 - D - RAL9010**

### Codes

<b>1) Quantity</b>		
<b>2) Size (mm)</b>	(Width x height)	Neck size Use O/A suffix for overall face size
<b>3) Series</b>	CD1 CD20 CD2C CD3 CD4	Louvre faced ceiling diffuser - 1 way blow Louvre faced ceiling diffuser - 2 way opposed blow Louvre faced ceiling diffuser - 2 way corner blow Louvre faced ceiling diffuser - 3 way blow Louvre faced ceiling diffuser - 4 way blow
		If size is not square and series is not CD4, please ensure S/L/R suffix is included, see page 4 for more details.
<b>4) Damper</b>	D	Opposed blade damper fitted
<b>5) Fixings</b>	<i>*nothing*</i> FH BT	No fixings, suitable for lay-in ceiling systems Countersunk fixing holes (screws supplied in same finish) Factory fitted into Burgess tile For other tile systems please contact us
<b>6) Blanking plates</b>	BP...	Required blow pattern <i>e.g. 'BP 3' to modify a diffuser to create a 3 way throw</i> <i>Required number of blow directions must be less than that given by the diffuser itself</i>
<b>7) Neck reducer plate</b>	NRP...	Required reduced neck size <i>e.g. 'NRP 225mm' to reduce the active neck size of a larger diffuser to 225mm x 225mm</i>
<b>8) Finish</b>	Mill RAL... BS...	Mill aluminium Polyester powder coated to RAL... Polyester powder coated to BS...

Leave code section blank if no option is required.

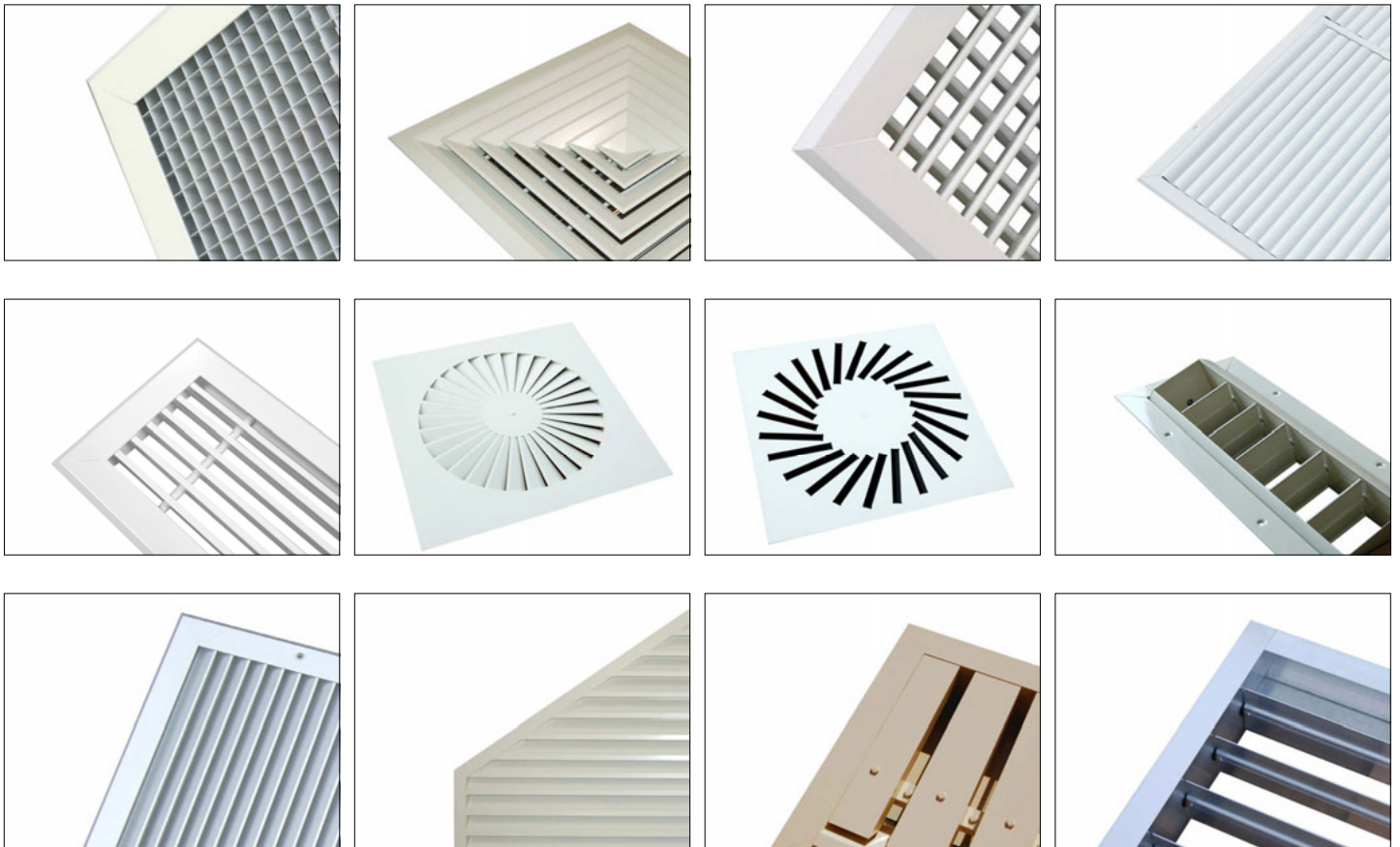
**Important note:** Sizes given for Series CD diffusers are taken to be neck size (not nominal) unless stated.

## HVC & NCA products

HVC offer the significant advantage of manufacturing both in duct and duct terminal equipment, making us a one stop shop for all your HVAC needs.

The products shown below are a selection, not an exhaustive list. Go to [www.h-v-c.com](http://www.h-v-c.com) for details on all HVC and NCA products.

### HVC: Grilles, Diffusers, Louvres and Volume Control Dampers



### NCA: Fire and Volume Control Dampers





Assessed to ISO 9001  
Cert/Ref No. 1186

HVC Supplies (Stourbridge) Ltd  
Jason House  
Amblecote  
West Midlands  
DY8 4EY  
United Kingdom

Tel: +44 (0)1384 376555  
Fax: +44 (0)1384 392555

sales@h-v-c.com

[www.h-v-c.com](http://www.h-v-c.com)

All details within this brochure are correct at time of publication. However HVC's policy is one of continual product development. The right is reserved to alter any details published in this brochure without any prior notice. Any changes will appear on [www.h-v-c.com](http://www.h-v-c.com) as soon as is practically possible.

All information in this brochure is designed to be used for informative purposes only. HVC will not be legally bound by anything contained within this publication, or any other information distributed.

All references to companies not part of the HVC group of companies are used with the permission of their respective owners.