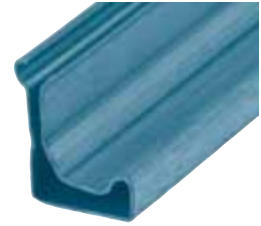
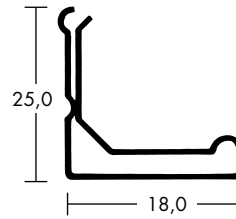


## 1.2.1 MEZ-STANDARD-FLANGE SYSTEM 20

- 45° supporting limb provides for optimum stability
- The versions **L** and **LS** with a double sealing bead
- The version **LS** with injected sealing compound for an enhanced requirement of tightness
- Profile length: 5000 mm



Art.-Nr.	Material	Material thickness/mm	Moment of inertia/cm <sup>4</sup>	VPE m	Weight kg/m
120 L	Galvanised steel	0,70	0,280	500	0,470
120 LS	Galvanised steel	0,70	0,280	500	0,470

**DW/TM1**  
 approved for  
 Tightness classes  
 A, B, C, D  
 Connecting  
 line: J2

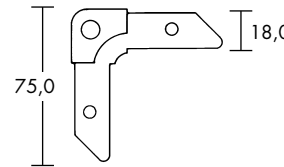
### Workmanship Guidelines:

Maximum edge length (mm)		
500 PA	1000 PA	2500 PA
1000 mm	800 mm	600 mm

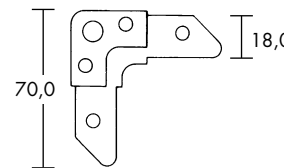
- The duct grooved seams do **not** need to be notched up
- For details on frame production see technical features

## MEZ-CORNER

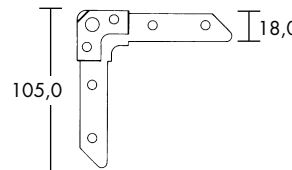
- Corner to be attached to the duct wall
- Sealing of the corners done on the inside of the air duct wall



Art.-Nr.	Material	Material thickness/mm	Screw hole ø mm	Deduction mass mm	VPE units	Weight kg/piece
220	Galvanised steel	3,00	9	10	500	0,047



Art.-Nr.	Material	Material thickness/mm	Screw hole ø mm	Deduction mass mm	VPE units	Weight kg/piece
224	Galvanised steel	3,00	9	30	500	0,048



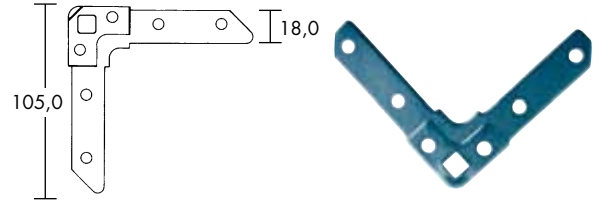
Art.-Nr.	Material	Material thickness/mm	Screw hole ø mm	Deduction mass mm	VPE units	Weight kg/piece
225	Galvanised steel	3,00	9	30	500	0,063
225 E	Stainless steel	3,00	9	30	500	0,063



## 1.2.1 MEZ-STANDARD-FLANGE SYSTEM 20

### MEZ-CORNER

- Corner for square bolt to be attached to the duct wall
- Sealing of the corners done on the inside of the air duct wall



Art.-Nr.	Material	Material thickness/mm	Screw hole mm	Deduction mass mm	VPE units	Weight kg/piece
225 V	Galvanised steel	3,00	9 x 9	30	500	0,063

