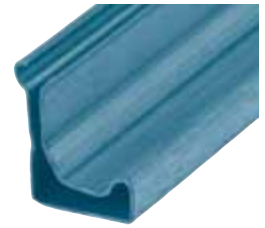
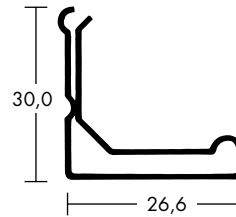


## 1.2.2 MEZ-STANDARD-FLANGE SYSTEM 30

- 45° supporting limb provides for optimum stability
- The versions **L** and **LS** with a double sealing bead
- The version **LS** with injected sealing compound for an enhanced requirement of tightness
- Profile length: 5000 mm



Art.-Nr.	Material	Material-thickness/mm	Moment of inertia / cm <sup>4</sup>	VPE m	Weight kg/m
130 L	Galvanised steel	0,80	0,880	500	0,710
130 LS	Galvanised steel	0,80	0,880	500	0,710

**DW/TM1**  
approved for  
Tightness classes  
A, B, C, D  
Connecting  
line: J2

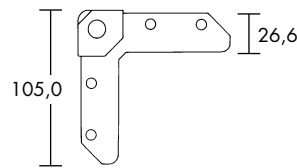
### Workmanship Guidelines:

Maximum edge length (mm)		
500 PA	1000 PA	2500 PA
1600 mm	1400 mm	1200 mm

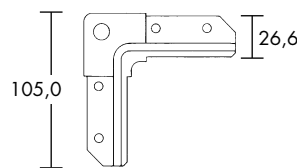
- The duct grooved seams do **not** need to be notched up
- For details on frame production see technical features

## MEZ-CORNER

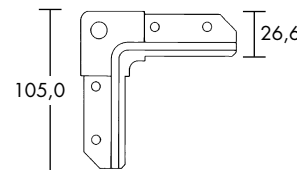
- Corner to be attached to the duct wall
- Sealing of the corners done on the inside of the air duct wall



Art.-Nr.	Material	Material thickness/mm	Screw hole ø mm	Deduction mass mm	VPE units	Weight kg/piece
230	Galvanised steel	4,00	13	10	250	0,127



Art.-Nr.	Material	Material-thickness/mm	Screw hole ø mm	Deduction mass mm	VPE units	Weight kg/piece
233	Galvanised steel	3,00	11	30	250	0,104



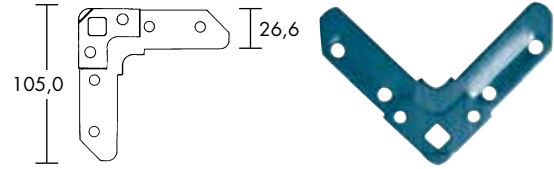
Art.-Nr.	Material	Material-thickness/mm	Screw hole ø mm	Deduction mass mm	VPE units	Weight kg/piece
234	Galvanised steel	4,00	11	30	250	0,136
234 E	Stainless steel	4,00	13	30	250	0,136



## 1.2.2 MEZ-STANDARD-FLANGE SYSTEM 30

### MEZ-CORNER

- Corner for square bolt to be attached to the duct wall
- Sealing of the corners done on the inside of the air duct wall



Art.-Nr.	Material	Material thickness/mm	Screw hole mm	Deduction mass mm	VPE units	Weight kg/piece
233 V	Galvanised steel	3,00	11 x 11	30	250	0,104

