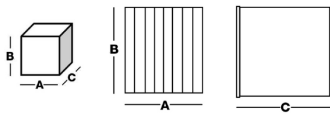
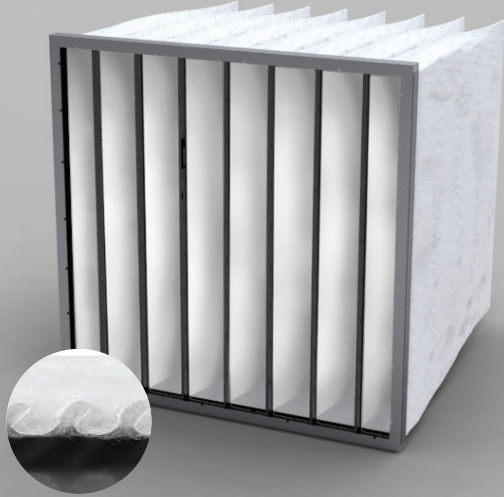


# BAG FILTERS

NW ES

A+



## APPLICATIONS

Primary filtration for air treatment units.

## ADVANTAGES

- Low pressure drop
- Excellent dust holding capacity
- Self-supporting welded pocket
- Easy to place
- Tested for food contact according to CE 1935/2004

## GENERAL FEATURES

- Efficiency following ISO 16890 : 2016
- Media: Nanowave
- Final pressure drop: 300 Pa
- Maximum T° in continuous service: 80°C
- Humidity: 100% RH

Barcode  
Width A (mm)  
Height B (mm)  
Depth C (mm)  
Pocket  
Media area (m<sup>2</sup>)  
Actual filter area (m<sup>2</sup>)  
Flow rate (m<sup>3</sup>/h)/  
Delta P (Pa)  
Energy cons. (kwh/an) \*  
Energy class \*\*

### ePM1 70% ISO 16890 - (F7)

NWES95-6/360/08	592	592	360	8	3,4	8,5	3400 / 99	1495	C
NWES95-5/360/06	490	592	360	6	2,6	6,5	2800 / 99	-	-
NWES95-3/360/04	287	592	360	4	1,7	4,25	1700 / 99	-	-
NWES95-6/360/10	592	592	360	10	4,3	10,75	3400 / 95	1335	C
NWES95-5/360/08	490	592	360	8	3,4	8,5	2800 / 95	-	-
NWES95-3/360/05	287	592	360	5	2,1	5,25	1700 / 95	-	-
NWES95-6/450/08	592	592	450	8	4,3	10,75	3400 / 83	1183	B
NWES95-5/450/06	490	592	450	6	3,2	8	2800 / 83	-	-
NWES95-3/450/03	287	592	450	3	2,1	5,25	1700 / 83	-	-
NWES95-6/450/10	592	592	450	10	5,3	13,25	3400 / 79	1050	A
NWES95-5/450/08	490	592	450	8	4,3	10,75	2800 / 79	-	-
NWES95-3/450/05	287	592	450	5	2,7	6,75	1700 / 79	-	-
NWES95-6/580/08	592	592	580	8	5,5	13,75	3400 / 73	961	A
NWES95-5/580/06	490	592	580	6	4,6	11,5	2800 / 73	-	-
NWES95-3/580/04	287	592	580	4	2,75	6,9	1700 / 73	-	-
NWES95-6/580/10	592	592	580	10	6,9	17,25	3400 / 68	827	A+
NWES95-5/580/08	490	592	580	8	6	15	2800 / 68	-	-
NWES95-3/580/05	287	592	580	5	3,5	8,75	1700 / 68	-	-

### ePM1 90% ISO 16890 - (F9)

NWES98-6/360/08	592	592	360	8	3,4	8,5	3400 / 149	2172	D
NWES98-5/360/06	490	592	360	6	2,6	6,5	2800 / 149	-	-
NWES98-3/360/04	287	592	360	4	1,7	4,25	1700 / 149	-	-
NWES98-6/360/10	592	592	360	10	4,3	10,75	3400 / 129	1797	C
NWES98-5/360/08	490	592	360	8	3,4	8,5	2800 / 129	-	-
NWES98-3/360/05	287	592	360	5	2,1	5,25	1700 / 129	-	-
NWES98-6/450/08	592	592	450	8	4,3	10,75	3400 / 122	1706	C
NWES98-5/450/06	490	592	450	6	3,2	8	2800 / 122	-	-
NWES98-3/450/03	287	592	450	3	2,1	5,25	1700 / 122	-	-
NWES98-6/450/10	592	592	450	10	5,3	13,25	3400 / 104	1389	A
NWES98-5/450/08	490	592	450	8	4,3	10,75	2800 / 104	-	-
NWES98-3/450/05	287	592	450	5	2,7	6,75	1700 / 104	-	-
NWES98-6/580/08	592	592	580	8	5,5	13,75	3400 / 96	1250	A
NWES98-5/580/06	490	592	580	6	4,6	11,5	2800 / 96	-	-
NWES98-3/580/04	287	592	580	4	2,75	6,9	1700 / 96	-	-
NWES98-6/580/10	592	592	580	10	6,9	17,25	3400 / 84	1044	A+
NWES98-5/580/08	490	592	580	8	6	15	2800 / 84	-	-
NWES98-3/580/05	287	592	580	5	3,5	8,75	1700 / 84	-	-



\* Energy Consumption, kWh/year: Calculated according to Eurovent Guideline 4/21-2018

\*\* Energy class: according to Eurovent RS 4/C/001-2019