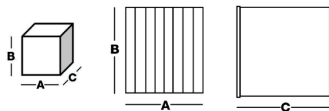
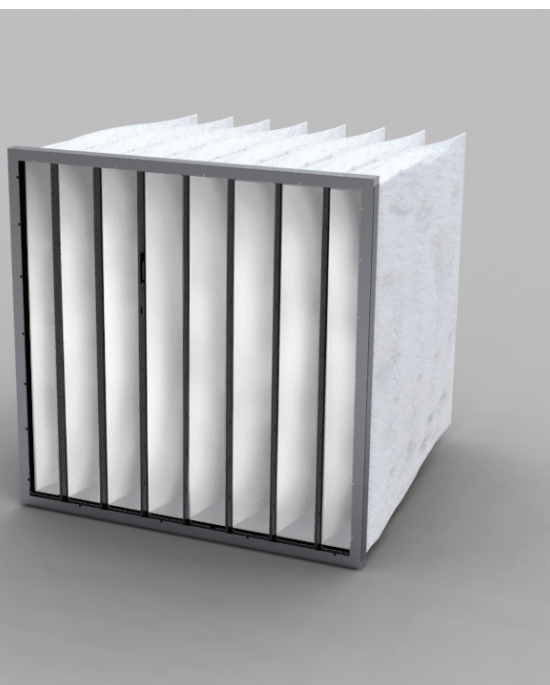


BAG FILTERS

K50



APPLICATIONS

Filtration for air treatment units.

ADVANTAGES

- Hi-Tech aerodynamic profile reducing turbulences in the outlet air
- Conical sewn pocket
- Low pressure drop
- Low energy use
- Variant in plastic frame (SECURE) upon request
- Tested for food contact according to CE 1935/2004

GENERAL FEATURES

- Efficiency following ISO 16890 : 2016
- Media: Synthetic
- Frame: Galvanized steel
- Final pressure drop: 300 Pa
- ECO recommended final pressure drop: 250 Pa
- Maximum T° in continuous service: 70°C
- Humidity: 100% RH

Description	Width A (mm)	Height B (mm)	Depth C (mm)	Pocket	Media area (m ²)	Flow rate (m ³ /h)/ Delta P (Pa)	Energy cons. (kWh/an) *	Energy class **
-------------	--------------	---------------	--------------	--------	------------------------------	--	-------------------------	-----------------

ePM10 65% ISO 16890 - (M5)

K50-6/360/06	592	592	360	6	2,5	3400 / 79	1560	E
K50-5/360/05	490	592	360	5	2,1	2800 / 79	-	-
K50-3/360/03	287	592	360	3	1,3	1700 / 79	-	-
K50-6/360/08	592	592	360	8	3,4	3400 / 72	1258	E
K50-5/360/06	490	592	360	6	2,6	2800 / 72	-	-
K50-3/360/04	287	592	360	4	1,7	1700 / 72	-	-
K50-6/360/10	592	592	360	10	4,3	3400 / 68	1108	D
K50-5/360/08	490	592	360	8	3,4	2800 / 68	-	-
K50-3/360/05	287	592	360	5	2,1	1700 / 68	-	-
K50-6/450/06	592	592	450	6	3,2	3400 / 72	1199	D
K50-5/450/05	490	592	450	5	2,7	2800 / 72	-	-
K50-3/450/03	287	592	450	3	1,6	1700 / 72	-	-
K50-6/450/08	592	592	450	8	4,3	3400 / 62	967	D
K50-5/450/06	490	592	450	6	3,2	2800 / 62	-	-
K50-3/450/04	287	592	450	4	2,1	1700 / 62	-	-
K50-6/450/10	592	592	450	10	5,3	3400 / 61	900	D
K50-5/450/08	490	592	450	8	4,3	2800 / 61	-	-
K50-3/450/05	287	592	450	5	2,7	1700 / 61	-	-
K50-6/580/06	592	592	580	6	4,1	3400 / 66	1023	D
K50-5/580/05	490	592	580	5	3	2800 / 66	-	-
K50-3/580/03	287	592	580	3	2	1700 / 66	-	-
K50-6/580/08	592	592	580	8	5,5	3400 / 61	829	C
K50-5/580/06	490	592	580	6	4,6	2800 / 61	-	-
K50-3/580/04	287	592	580	4	2,7	1700 / 61	-	-
K50-6/580/10	592	592	580	10	6,9	3400 / 60	787	C
K50-5/580/08	490	592	580	8	6	2800 / 60	-	-
K50-3/580/05	287	592	580	5	3,5	1700 / 60	-	-

* Energy Consumption, kWh/year: Calculated according to Eurovent Guideline 4/21-2018

** Energy class: according to Eurovent RS 4/C/001-2019



Tip Synthetic filter new generation meets the EN779: 2012. Ask the VTT or SP test...