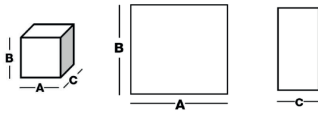
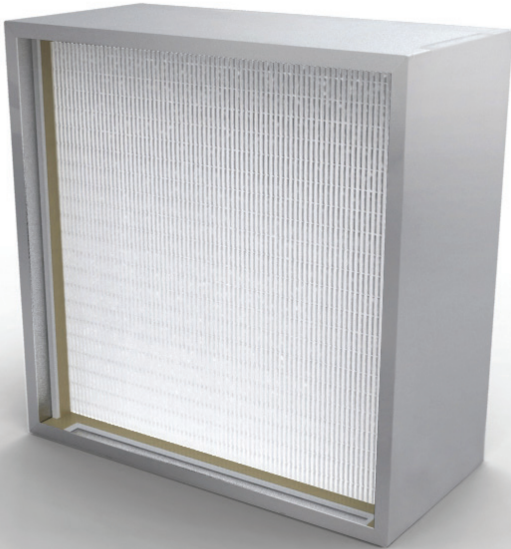


# ABSOLUTE FILTERS

## THE-MP G-150 MM



Barcode	Description	Width A (mm)	Height B (mm)	Thickness C (mm)	Pleat pack	Media area (m <sup>2</sup> )	Flow rate (m <sup>3</sup> /h) / Delta P (Pa)
<b>E10</b>							
1903588	THE-MP100G	305	305	150	75	3,1	850 / 250
1903589	THE-MP100G	305	610	150	75	6,2	1700 / 250
1903593	THE-MP100G	457	610	150	75	9,4	2550 / 250
1903597	THE-MP100G	610	610	150	75	12,5	3400 / 250
1903598	THE-MP100G	610	762	150	75	15,6	4250 / 250
1903599	THE-MP100G	610	915	150	75	18,7	5100 / 250
1903600	THE-MP100G	610	1220	150	75	25	6800 / 250
1903601	THE-MP100G	610	1525	150	75	31,2	8500 / 250
1903602	THE-MP100G	610	1830	150	75	37,5	10200 / 250
1903609	THE-MP100G	915	1220	150	75	37,5	10200 / 250
1904006	THE-MP100G	305	305	150	100	4,5	900 / 250
1904008	THE-MP100G	305	610	150	100	9	1800 / 250
1904007	THE-MP100G	457	610	150	100	13,5	2700 / 250
1904009	THE-MP100G	610	610	150	100	18	3600 / 250
1904014	THE-MP100G	610	762	150	100	22,5	4500 / 250
1904010	THE-MP100G	610	915	150	100	27	5400 / 250
1904011	THE-MP100G	610	1220	150	100	36	7200 / 250
1904012	THE-MP100G	610	1525	150	100	44,9	9000 / 250
1904013	THE-MP100G	610	1830	150	100	54	10800 / 250
1904015	THE-MP100G	915	1220	150	100	54	10800 / 250
<b>H13</b>							
1903621	THE-MP130G	305	305	150	75	3,1	750 / 250
1903626	THE-MP130G	457	610	150	75	9,4	1120 / 250
1903622	THE-MP130G	305	610	150	75	6,2	750 / 250
1903630	THE-MP130G	610	610	150	75	12,5	1500 / 250
1903632	THE-MP130G	610	915	150	75	18,7	2250 / 250
1903633	THE-MP130G	610	1220	150	75	25	3000 / 250

### APPLICATIONS

Terminal filtration in air treatment units for CLEANROOM applications.

### ADVANTAGES

- Made of a minipleat media, advantageously replacing the old generation deep pleat media
- High airflow
- Low pressure drop
- Individual leak test on 0,3 µm at 0,45 m/s according to DIN 24.184 standard (from H13)
- MPPS individual efficiency test on 0,12 µm at 0,45 m/s (scanning test) according to EN1822 standard
- Individual scanning test delivered with the filter
- Double labeling for traceability
- Tested for food contact according to CE 1935/2004
- Certified for microbial development (ISO 846-VD 6022)

### GENERAL FEATURES

- Efficiency EN1822: E10-H14
- Media: Mini pleat fiberglass paper
- Frame: Galvanized steel (G), Stainless steel (I) or Aluminium (A)
- Sealant: Polyurethane
- Separator: Continuous thermoplastic beads
- Gasket: Flat neoprene or half-round monobloc polyurethane
- Final pressure drop: 600 Pa
- Maximum T° in continuous service: 70°C
- Humidity: 70-80% RH

# ABSOLUTE FILTERS


## THE-MP G-150 MM

Barcode	Description	Width A (mm)	Height B (mm)	Thickness C (mm)	Pleat pack	Media area (m <sup>2</sup> )	Flow rate (m <sup>3</sup> /h)/ Delta P (Pa)
1903634	THE-MP130G	610	1525	150	75	31,2	3750 / 250
1903635	THE-MP130G	610	1830	150	75	37,5	4500 / 250
1903631	THE-MP130G	610	762	150	75	15,6	1870 / 250
1903642	THE-MP130G	915	1220	150	75	37,5	4500 / 250
1904016	THE-MP130G	305	305	150	100	4,5	475 / 250
1904018	THE-MP130G	305	610	150	100	9	950 / 250
1904017	THE-MP130G	457	610	150	100	13,5	1420 / 250
1903884	THE-MP130G	610	610	150	100	18	1900 / 250
1904023	THE-MP130G	610	762	150	100	22,5	2370 / 250
1904019	THE-MP130G	610	915	150	100	27	2850 / 250
1904020	THE-MP130G	610	1220	150	100	36	3800 / 250
1904021	THE-MP130G	610	1525	150	100	44,9	4750 / 250
1904022	THE-MP130G	610	1830	150	100	54	5700 / 250
1904024	THE-MP130G	915	1220	150	100	54	5700 / 250

### H14

1903654	THE-MP140G	305	305	150	75	3,1	325 / 250
1903655	THE-MP140G	305	610	150	75	6,2	650 / 250
1903659	THE-MP140G	457	610	150	75	9,4	975 / 250
1903663	THE-MP140G	610	610	150	75	12,5	1300 / 250
1903664	THE-MP140G	610	762	150	75	15,6	1620 / 250
1903665	THE-MP140G	610	915	150	75	18,7	1950 / 250
1903666	THE-MP140G	610	1220	150	75	25	2600 / 250
1903667	THE-MP140G	610	1525	150	75	31,2	3250 / 250
1903668	THE-MP140G	610	1830	150	75	37,5	3900 / 250
1903675	THE-MP140G	915	1220	150	75	37,5	3900 / 250
1904025	THE-MP140G	305	305	150	100	4,5	400 / 250
1904027	THE-MP140G	305	610	150	100	9	800 / 250
1904026	THE-MP140G	457	610	150	100	13,5	1200 / 250
1903885	THE-MP140G	610	610	150	100	18	1600 / 250
1904032	THE-MP140G	610	762	150	100	22,5	2000 / 250
1904028	THE-MP140G	610	915	150	100	27	2400 / 250
1904029	THE-MP140G	610	1220	150	100	36	3200 / 250
1904030	THE-MP140G	610	1525	150	100	44,9	4000 / 250
1904031	THE-MP140G	610	1830	150	100	54	4800 / 250
1904033	THE-MP140G	915	1220	150	100	54	4800 / 250

EN 1822  
CERTIFIED

**Tip**  The lifetime of an air filter is not proportional to its filtration area in use; it's more than that: choose a model with 50% filtration Media area more and you'll increase its lifetime of 100% !