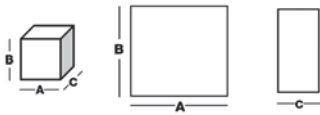
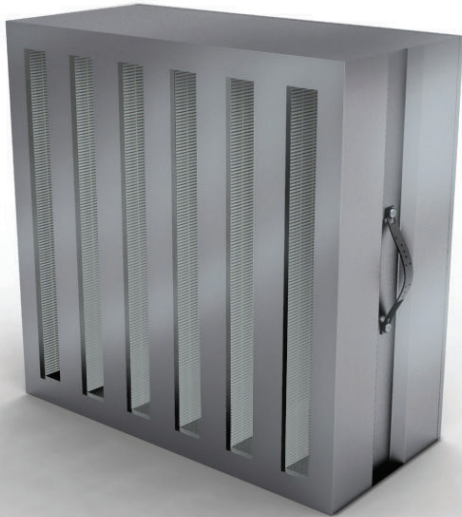


HEPA FILTERS

THE-VF G and HC



APPLICATIONS

- Terminal filtration in air treatment units for CLEANROOM applications
- Hazardous and toxic contaminants extraction housings (asbestos, etc.)

ADVANTAGES

- Strong and high-finished execution
- High airflow
- Very low initial pressure drop
- Individual leak test on 0,3µm at 0,45 m/s according to DIN 24.184 standard (from H13)
- MPPS individual efficiency test on 12µm at 0,45 m/s (scanning test) according to EN1822 standard
- Individual test delivered with the filter
- Double labeling for traceability
- Tested for food contact according to CE 1935/2004
- Certified for microbial development (ISO 846-VD 6022)

Barcode	Description	Width A (mm)	Height B (mm)	Depth C (mm)	Media area (m ²)	Flow rate (m ³ /h) / Delta P (Pa)
E10						
1900227	THE-VF100G	610	610	292	40	6000 / 250
1900226	THE-VF100G	457	610	292	30	4500 / 250
1900225	THE-VF100G	305	610	292	20	3000 / 250
1900224	THE-VF100G	305	305	292	10	1500 / 250
1900220	THE-VF100G	610	610	292	35	5000 / 250
1900218	THE-VF100G	457	610	292	26	3750 / 250
1900217	THE-VF100G	305	610	292	17,5	2500 / 250
1900216	THE-VF100G	305	305	292	9	1250 / 250
H13						
1900244	THE-VF130G	610	610	292	40	4000 / 250
1900243	THE-VF130G	457	610	292	30	3000 / 250
1900242	THE-VF130G	305	610	292	20	2000 / 250
1900241	THE-VF130G	305	305	292	10	1000 / 250
1900237	THE-VF130G	610	610	292	35	3400 / 250
1900235	THE-VF130G	457	610	292	26	2550 / 250
1900234	THE-VF130G	305	610	292	17,5	1700 / 250
1900233	THE-VF130G	305	305	292	9	850 / 250
H14						
1900259	THE-VF140G	610	610	292	40	3200 / 250
1900258	THE-VF140G	457	610	292	30	2400 / 250
1900257	THE-VF140G	305	610	292	20	1600 / 250
1900256	THE-VF140G	305	305	292	10	800 / 250
1900252	THE-VF140G	610	610	292	35	2800 / 250
1900250	THE-VF140G	457	610	292	26	2100 / 250
1900249	THE-VF140G	305	610	292	17,5	1400 / 250
1900248	THE-VF140G	305	305	292	9	700 / 250

EN 1822
CERTIFIED

Tip 💡 The lifetime of an air filter is not proportional to its filtration area in use; it's more than that: choose a model with 50% filtration Media area more and you'll increase its lifetime of 100%!

GENERAL FEATURES

- Efficiency EN1822: E10-H14
- Media: Mini pleat fiberglass paper
- Frame: Galvanized steel (G) or Stainless steel (I) with ergonomic handles
- Sealant: Polyurethane
- Separator: Continuous thermoplastic beads
- Gasket: Half-round monobloc polyurethane
- Final pressure drop: 600 Pa
- Maximum T° in continuous service: 80°C
- Humidity: 70-80% RH