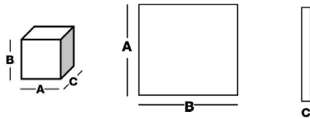
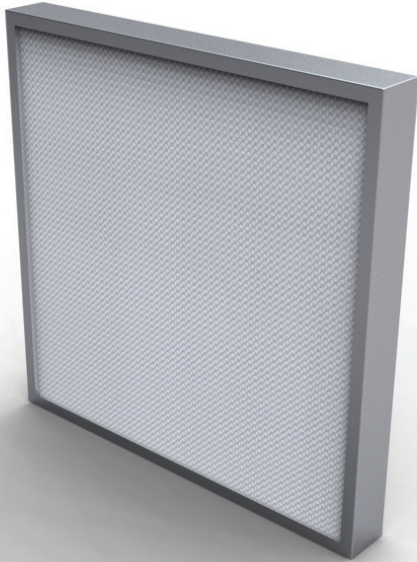


ABSOLUTE FILTERS

THE-LA-69 MM



Barcode	Description	Width A (mm)	Height B (mm)	Thickness C (mm)	Pleat pack	Media area (m ²)	Flow rate (m ³ /h)/ Delta P (Pa)
E10							
1900149	THE-LA100A	305	305	69	50	2,6	150 / 50
1900151	THE-LA100A	305	610	69	50	5,2	300 / 50
1900154	THE-LA100A	457	457	69	50	5,8	335 / 50
1900155	THE-LA100A	457	610	69	50	7,8	450 / 50
1900156	THE-LA100A	610	610	69	50	10,4	600 / 50
1900157	THE-LA100A	610	762	69	50	13	750 / 50
1900158	THE-LA100A	610	915	69	50	15,6	900 / 50
1900159	THE-LA100A	610	1220	69	50	20,8	1200 / 50
1900160	THE-LA100A	610	1525	69	50	26	1500 / 50
1900161	THE-LA100A	610	1830	69	50	31,2	1800 / 50
1900162	THE-LA100A	762	762	69	50	16,2	935 / 50
1900167	THE-LA100A	915	915	69	50	23,4	1350 / 50
1900168	THE-LA100A	915	1220	69	50	31,2	1800 / 50
H13							
1900172	THE-LA130A	305	305	69	50	2,6	150 / 110
1900174	THE-LA130A	305	610	69	50	5,2	300 / 110
1900177	THE-LA130A	457	457	69	50	5,8	335 / 110
1900178	THE-LA130A	457	610	69	50	7,8	450 / 110
1900179	THE-LA130A	610	610	69	50	10,4	600 / 110
1900180	THE-LA130A	610	762	69	50	13	750 / 110
1900181	THE-LA130A	610	915	69	50	15,6	900 / 110
1900182	THE-LA130A	610	1220	69	50	20,8	1200 / 110
1900183	THE-LA130A	610	1525	69	50	26	1500 / 110
1900184	THE-LA130A	610	1830	69	50	31,2	1800 / 110
1900185	THE-LA130A	762	762	69	50	16,2	935 / 110
1900190	THE-LA130A	915	915	69	50	23,4	1350 / 110
1900191	THE-LA130A	915	1220	69	50	31,2	1800 / 110

APPLICATIONS

Terminal filtration for
CLEANROOM applications.

ADVANTAGES

- High airflow
- Very low pressure drop
- Individual leak test on 0,3 µm at 0,45 m/s according to DIN 24.184 standard (from H13)
- MPPS individual efficiency test on 0,12 µm at 0,45 m/s (scanning test) according to EN1822 standard
- Individual scanning test delivered with the filter
- Double labeling for traceability
- Tested for food contact according to CE 1935/2004
- Certified for microbial development (ISO 846-VD 6022)


GENERAL FEATURES

- Efficiency EN1822: E10-U15
- Media: Mini pleat micro-fiberglass paper
- Frame: Extruded anodized aluminium
- Sealant: Polyurethane
- Separator: Continuous thermoplastic beads
- Gasket: Half-round monobloc polyurethane
- Grids: Painted epoxy (upstream and downstream)
- Final pressure drop: 600 Pa
- Maximum T° in continuous service: 80°C
- Humidity: 70-80% RH

ABSOLUTE FILTERS

THE-LA-69 MM

Barcode	Description	Width A (mm)	Height B (mm)	Thickness C (mm)	Pleat pack	Media area (m ²)	Flow rate (m ³ /h)/ Delta P (Pa)
H14							
1900195	THE-LA140A	305	305	69	50	2,6	150 / 120
1900197	THE-LA140A	305	610	69	50	5,2	300 / 120
1900200	THE-LA140A	457	457	69	50	5,8	335 / 120
1900201	THE-LA140A	457	610	69	50	7,8	450 / 120
1900137	THE-LA140A	610	610	69	50	10,4	600 / 120
1900202	THE-LA140A	610	762	69	50	13	750 / 120
1900203	THE-LA140A	610	915	69	50	15,6	900 / 120
1900140	THE-LA140A	610	1220	69	50	20,8	1200 / 120
1900204	THE-LA140A	610	1525	69	50	26	1500 / 120
1900205	THE-LA140A	610	1830	69	50	31,2	1800 / 120
1900206	THE-LA140A	762	762	69	50	16,2	935 / 120
1900211	THE-LA140A	915	915	69	50	23,4	1350 / 120
1900212	THE-LA140A	915	1220	69	50	31,2	1800 / 120
1904477	THE-LA140A	1140	1140	69	50	39	2300 / 120
U15							
1900992	THE-LA150A	305	305	69	50	2,6	150 / 140
1900963	THE-LA150A	305	610	69	50	5,2	300 / 140
1901324	THE-LA150A	457	457	69	50	5,8	335 / 140
1901325	THE-LA150A	457	610	69	50	7,8	450 / 140
1900930	THE-LA150A	610	610	69	50	10,4	600 / 140
1901066	THE-LA150A	610	762	69	50	13	750 / 140
1900931	THE-LA150A	610	915	69	50	15,6	900 / 140
1900929	THE-LA150A	610	1220	69	50	20,8	1200 / 140
1901067	THE-LA150A	610	1525	69	50	26	1500 / 140
1901068	THE-LA150A	610	1830	69	50	31,2	1800 / 140
1901332	THE-LA150A	762	762	69	50	16,2	935 / 140
1901072	THE-LA150A	915	915	69	50	23,4	1350 / 140
1901333	THE-LA150A	915	1220	69	50	31,2	1800 / 140

Tip  The lifetime of an air filter is not proportional to its filtration area in use; it's more than that: choose a model with 50% filtration Media area more and you'll increase its lifetime of 100% !

EN 1822
CERTIFIED