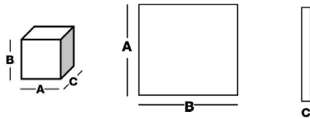
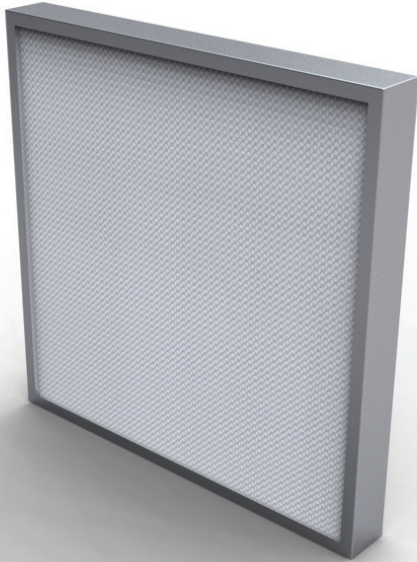


ABSOLUTE FILTERS

THE-LA-78 MM



Barcode	Description	Width A (mm)	Height B (mm)	Thickness C (mm)	Pleat pack	Media area (m ²)	Flow rate (m ³ /h) / Delta P (Pa)
E10							
1900670	THE-LA100A	305	305	78	50	2,6	150 / 50
1900674	THE-LA100A	305	610	78	50	5,2	300 / 50
1900687	THE-LA100A	457	457	78	50	5,8	335 / 50
1900692	THE-LA100A	457	610	78	50	7,8	450 / 50
1900680	THE-LA100A	610	610	78	50	10,4	600 / 50
1900685	THE-LA100A	610	762	78	50	13	750 / 50
1900694	THE-LA100A	610	915	78	50	15,6	900 / 50
1900696	THE-LA100A	610	1220	78	50	20,8	1200 / 50
1900698	THE-LA100A	610	1525	78	50	26	1500 / 50
1900700	THE-LA100A	610	1830	78	50	31,2	1800 / 50
1900702	THE-LA100A	762	762	78	50	16,2	935 / 50
1900712	THE-LA100A	915	915	78	50	23,4	1350 / 50
1900714	THE-LA100A	915	1220	78	50	31,2	1800 / 50
H13							
1900725	THE-LA130A	305	305	78	50	2,6	150 / 110
1900729	THE-LA130A	305	610	78	50	5,2	300 / 110
1900741	THE-LA130A	457	457	78	50	5,8	335 / 110
1900746	THE-LA130A	457	610	78	50	7,8	450 / 110
1900326	THE-LA130A	610	610	78	50	10,4	600 / 110
1900739	THE-LA130A	610	762	78	50	13	750 / 110
1900748	THE-LA130A	610	915	78	50	15,6	900 / 110
1900754	THE-LA130A	610	1830	78	50	31,2	1800 / 110
1900756	THE-LA130A	762	762	78	50	16,2	935 / 110
1900766	THE-LA130A	915	915	78	50	23,4	1350 / 110
1900768	THE-LA130A	915	1220	78	50	31,2	1800 / 110

APPLICATIONS

Terminal filtration for CLEANROOM applications.

ADVANTAGES

- High airflow
- Very low pressure drop
- Individual leak test on 0,3 µm at 0,45 m/s according to DIN 24.184 standard
- MPPS individual efficiency test on 0,12 µm at 0,45 m/s (scanning test) according to EN1822 standard
- Individual scanning test delivered with the filter
- Double labeling for traceability
- Tested for food contact according to CE 1935/2004
- Certified for microbial development (ISO 846-VD 6022)

GENERAL FEATURES


- Efficiency EN1822: E10-U15
- Media: Mini pleat micro-fiberglass paper
- Frame: Extruded anodized aluminium
- Sealant: Polyurethane
- Separator: Continuous thermoplastic beads
- Gasket: Half-round monobloc polyurethane
- Grids: Painted epoxy (upstream and downstream)
- Final pressure drop: 600 Pa
- Maximum T° in continuous service: 80°C
- Humidity: 70-80% RH

ABSOLUTE FILTERS

THE-LA-78 MM

Barcode	Description	Width A (mm)	Height B (mm)	Thickness C (mm)	Pleat pack	Media area (m ²)	Flow rate (m ³ /h) / Delta P (Pa)
H14							
1900779	THE-LA140A	305	305	78	50	2,6	150 / 120
1900783	THE-LA140A	305	610	78	50	5,2	300 / 120
1900795	THE-LA140A	457	457	78	50	5,8	335 / 120
1900800	THE-LA140A	457	610	78	50	7,8	450 / 120
1900640	THE-LA140A	610	610	78	50	10,4	600 / 120
1900793	THE-LA140A	610	762	78	50	13	750 / 120
1900802	THE-LA140A	610	915	78	50	15,6	900 / 120
1900804	THE-LA140A	610	1220	78	50	20,8	1200 / 120
1900806	THE-LA140A	610	1525	78	50	26	1500 / 120
1900808	THE-LA140A	610	1830	78	50	31,2	1800 / 120
1900810	THE-LA140A	762	762	78	50	16,2	935 / 120
1900819	THE-LA140A	915	915	78	50	23,4	1350 / 120
1900002	THE-LA140A	915	1220	78	50	31,2	1800 / 120
U15							
1901361	THE-LA150A	305	305	78	50	2,6	305 / 140
1901388	THE-LA150A	305	610	78	50	5,2	300 / 140
1901364	THE-LA150A	457	457	78	50	5,8	335 / 140
1901365	THE-LA150A	457	610	78	50	7,8	450 / 140
1901389	THE-LA150A	610	610	78	50	10,4	600 / 140
1901367	THE-LA150A	610	762	78	50	13	750 / 140
1901368	THE-LA150A	610	915	78	50	15,6	900 / 140
1901369	THE-LA150A	610	1220	78	50	20,8	1200 / 140
1901370	THE-LA150A	610	1525	78	50	26	1500 / 140
1901371	THE-LA150A	610	1830	78	50	31,2	1800 / 140
1901372	THE-LA150A	762	762	78	50	16,2	935 / 140
1901377	THE-LA150A	915	915	78	50	23,4	1350 / 140
1901378	THE-LA150A	915	1220	78	50	31,2	1800 / 140



Tip  The lifetime of an air filter is not proportional to its filtration area in use; it's more than that: choose a model with 50% filtration Media area more and you'll increase its lifetime of 100% !