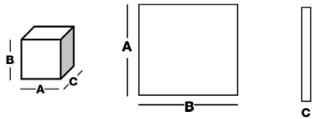
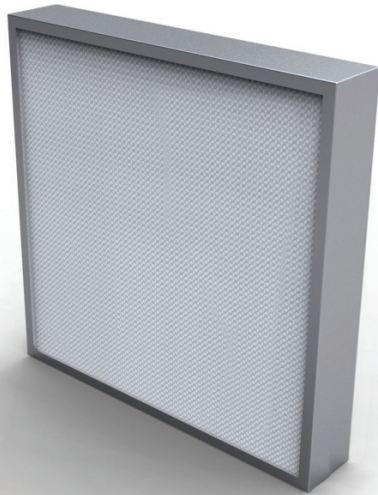


# ABSOLUTE FILTERS

## THE-LA-89 MM



| Barcode    | Description | Width A (mm) | Height B (mm) | Thickness C (mm) | Pleat pack | Media area (m <sup>2</sup> ) | Flow rate (m <sup>3</sup> /h)/<br>Delta P (Pa) |
|------------|-------------|--------------|---------------|------------------|------------|------------------------------|--|
| <b>E10</b> |             |              |               |                  |            |                              |  |
| 1900671    | THE-LA100A  | 305          | 305           | 89               | 75         | 3,1                          | 150 / 35                                       |
| 1900675    | THE-LA100A  | 305          | 610           | 89               | 75         | 6,2                          | 300 / 35                                       |
| 1900688    | THE-LA100A  | 457          | 457           | 89               | 75         | 7,0                          | 335 / 35                                       |
| 1900693    | THE-LA100A  | 457          | 610           | 89               | 75         | 9,4                          | 450 / 35                                       |
| 1900681    | THE-LA100A  | 610          | 610           | 89               | 75         | 12,5                         | 600 / 35                                       |
| 1900686    | THE-LA100A  | 610          | 762           | 89               | 75         | 15,6                         | 750 / 35                                       |
| 1900695    | THE-LA100A  | 610          | 915           | 89               | 75         | 18,7                         | 900 / 35                                       |
| 1900697    | THE-LA100A  | 610          | 1220          | 89               | 75         | 25                           | 1200 / 35                                      |
| 1900701    | THE-LA100A  | 610          | 1830          | 89               | 75         | 37,5                         | 1800 / 35                                      |
| 1900703    | THE-LA100A  | 762          | 762           | 89               | 75         | 19,5                         | 935 / 35                                       |
| 1900713    | THE-LA100A  | 915          | 915           | 89               | 75         | 28,1                         | 1350 / 35                                      |
| 1900715    | THE-LA100A  | 915          | 1220          | 89               | 75         | 37,5                         | 1800 / 35                                      |
| <b>H13</b> |             |              |               |                  |            |                              |  |
| 1900726    | THE-LA130A  | 305          | 305           | 89               | 75         | 3,1                          | 150 / 90                                       |
| 1900730    | THE-LA130A  | 305          | 610           | 89               | 75         | 6,2                          | 300 / 90                                       |
| 1900742    | THE-LA130A  | 457          | 457           | 89               | 75         | 7,0                          | 335 / 90                                       |
| 1900747    | THE-LA130A  | 457          | 610           | 89               | 75         | 9,4                          | 450 / 90                                       |
| 1900735    | THE-LA130A  | 610          | 610           | 89               | 75         | 12,5                         | 600 / 90                                       |
| 1900740    | THE-LA130A  | 610          | 762           | 89               | 75         | 15,6                         | 750 / 90                                       |
| 1900749    | THE-LA130A  | 610          | 915           | 89               | 75         | 18,7                         | 900 / 90                                       |
| 1900751    | THE-LA130A  | 610          | 1220          | 89               | 75         | 25                           | 1200 / 90                                      |
| 1900755    | THE-LA130A  | 610          | 1830          | 89               | 75         | 37,5                         | 1800 / 90                                      |
| 1900757    | THE-LA130A  | 762          | 762           | 89               | 75         | 19,5                         | 935 / 90                                       |
| 1900767    | THE-LA130A  | 915          | 915           | 89               | 75         | 28,1                         | 1350 / 90                                      |
| 1900769    | THE-LA130A  | 915          | 1220          | 89               | 75         | 37,5                         | 1800 / 90                                      |

### APPLICATIONS

Terminal filtration for CLEANROOM applications.

### ADVANTAGES

- High airflow
- Very low pressure drop
- Individual leak test on 0,3 µm at 0,45 m/s according to DIN 24.184 standard (from H13)
- MPPS individual efficiency test on 0,12 µm at 0,45 m/s (scanning test) according to EN1822 standard
- Individual scanning test delivered with the filter (from H13)
- Double labeling for traceability
- Tested for food contact according to CE 1935/2004
- Certified for microbial development (ISO 846-VD 6022)

### GENERAL FEATURES


- Efficiency EN1822: E10-U15
- Media: Mini pleat micro-fiberglass paper
- Frame: Extruded anodized aluminium
- Sealant: Polyurethane
- Separator: Continuous thermoplastic beads
- Gasket: Half-round monobloc polyurethane
- Grids: Painted epoxy (upstream and downstream)
- Maximum T° in continuous service: 80°C
- Humidity: 70-80% RH

# ABSOLUTE FILTERS

## THE-LA-89 MM

| Barcode    | Description | Width A (mm) | Height B (mm) | Thickness C (mm) | Pleat pack | Media area (m <sup>2</sup> ) | Flow rate (m <sup>3</sup> /h)/<br>Delta P (Pa) |
|------------|-------------|--------------|---------------|------------------|------------|------------------------------|--|
| <b>H14</b> |             |              |               |                  |            |                              |  |
| 1900780    | THE-LA140A  | 305          | 305           | 89               | 75         | 3,1                          | 150 / 100                                      |
| 1900784    | THE-LA140A  | 305          | 610           | 89               | 75         | 6,2                          | 300 / 100                                      |
| 1900796    | THE-LA140A  | 457          | 457           | 89               | 75         | 7                            | 335 / 100                                      |
| 1900801    | THE-LA140A  | 457          | 610           | 89               | 75         | 9,4                          | 450 / 100                                      |
| 1900789    | THE-LA140A  | 610          | 610           | 89               | 75         | 12,5                         | 600 / 100                                      |
| 1900794    | THE-LA140A  | 610          | 762           | 89               | 75         | 15,6                         | 750 / 100                                      |
| 1900803    | THE-LA140A  | 610          | 915           | 89               | 75         | 18,7                         | 900 / 100                                      |
| 1900805    | THE-LA140A  | 610          | 1220          | 89               | 75         | 25                           | 1200 / 100                                     |
| 1900809    | THE-LA140A  | 610          | 1830          | 89               | 75         | 37,5                         | 1800 / 100                                     |
| 1900811    | THE-LA140A  | 762          | 762           | 89               | 75         | 19,5                         | 935 / 100                                      |
| 1900820    | THE-LA140A  | 915          | 915           | 89               | 75         | 28,1                         | 1350 / 100                                     |
| 1900821    | THE-LA140A  | 915          | 1220          | 89               | 75         | 37,5                         | 1800 / 100                                     |
| <b>U15</b> |             |              |               |                  |            |                              |  |
| 1902071    | THE-LA150A  | 305          | 305           | 89               | 75         | 3,1                          | 150 / 120                                      |
| 1900924    | THE-LA150A  | 305          | 610           | 89               | 75         | 6,2                          | 300 / 120                                      |
| 1902074    | THE-LA150A  | 457          | 457           | 89               | 75         | 7,0                          | 335 / 120                                      |
| 1902075    | THE-LA150A  | 457          | 610           | 89               | 75         | 9,4                          | 450 / 120                                      |
| 1900923    | THE-LA150A  | 610          | 610           | 89               | 75         | 12,5                         | 600 / 120                                      |
| 1902079    | THE-LA150A  | 610          | 762           | 89               | 75         | 15,6                         | 750 / 120                                      |
| 1900925    | THE-LA150A  | 610          | 915           | 89               | 75         | 18,7                         | 900 / 120                                      |
| 1900926    | THE-LA150A  | 610          | 1220          | 89               | 75         | 25                           | 1200 / 120                                     |
| 1902081    | THE-LA150A  | 610          | 1830          | 89               | 75         | 37,5                         | 1800 / 120                                     |
| 1902082    | THE-LA150A  | 762          | 762           | 89               | 75         | 19,5                         | 935 / 120                                      |
| 1902087    | THE-LA150A  | 915          | 915           | 89               | 75         | 28,1                         | 1350 / 120                                     |
| 1902088    | THE-LA150A  | 915          | 1220          | 89               | 75         | 37,5                         | 1800 / 120                                     |

EN 1822  
CERTIFIED

**Tip**  The lifetime of an air filter is not proportional to its filtration area in use; it's more than that: choose a model with 50% filtration Media area more and you'll increase its lifetime of 100% !