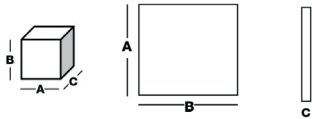
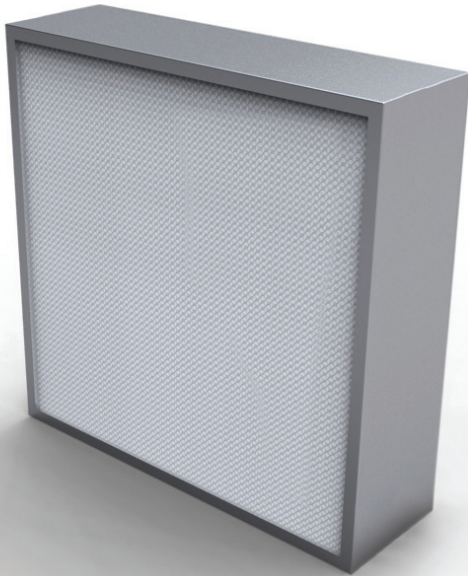


ABSOLUTE FILTERS

THE-LA-150 MM



Barcode	Description	Width A (mm)	Height B (mm)	Thickness C (mm)	Pleat pack	Media area (m ²)	Flow rate (m ³ /h)/ Delta P (Pa)
E10							
1902853	THE-LA100A	305	305	150	100	4,5	150 / 30
1902883	THE-LA100A	305	610	150	100	9	300 / 30
1902857	THE-LA100A	457	457	150	100	10,1	335 / 30
1902858	THE-LA100A	457	610	150	100	13,5	450 / 30
1902885	THE-LA100A	610	610	150	100	18	600 / 30
1902860	THE-LA100A	610	762	150	100	22,5	750 / 30
1902861	THE-LA100A	610	915	150	100	27	900 / 30
1902862	THE-LA100A	610	1220	150	100	36	1200 / 30
1902864	THE-LA100A	610	1830	150	100	54	1800 / 30
1902865	THE-LA100A	762	762	150	100	28,1	935 / 30
1902870	THE-LA100A	915	915	150	100	40,5	1350 / 30
1902871	THE-LA100A	915	1220	150	100	54	1800 / 30
H13							
1902929	THE-LA130A	305	305	150	100	4,5	150 / 75
1902956	THE-LA130A	305	610	150	100	9	300 / 75
1902932	THE-LA130A	457	457	150	100	10,1	335 / 75
1902933	THE-LA130A	457	610	150	100	13,5	450 / 75
1902958	THE-LA130A	610	610	150	100	18	600 / 75
1902935	THE-LA130A	610	762	150	100	22,5	750 / 75
1902936	THE-LA130A	610	915	150	100	27	900 / 75
1902937	THE-LA130A	610	1220	150	100	36	1200 / 75
1902939	THE-LA130A	610	1830	150	100	54,0	1800 / 75
1902940	THE-LA130A	762	762	150	100	28,1	935 / 75
1902945	THE-LA130A	915	915	150	100	40,5	1350 / 75
1902946	THE-LA130A	915	1220	150	100	54	1800 / 75

APPLICATIONS

Terminal filtration for CLEANROOM applications.

ADVANTAGES

- High airflow
- Very low pressure drop
- Individual leak test on 0,3 µm at 0,45 m/s according to DIN 24.184 standard (from H13)
- MPPS individual efficiency test on 0,12 µm at 0,45 m/s (scanning test) according to EN1822 standard
- Individual scanning test delivered with the filter
- Double labeling for traceability
- Tested for food contact according to CE 1935/2004
- Certified for microbial development (ISO 846-VD 6022)

GENERAL FEATURES


- Efficiency EN1822: E10-U15
- Media: Mini pleat micro-fiberglass paper
- Frame: Extruded anodized aluminium
- Sealant: Polyurethane
- Separator: Continuous thermoplastic beads
- Gasket: Half-round monobloc polyurethane
- Grids: Painted epoxy (upstream and downstream)
- Final pressure drop: 600 Pa
- Maximum T° in continuous service: 80°C
- Humidity: 70-80% RH

ABSOLUTE FILTERS

THE-LA-150 MM

Barcode	Description	Width A (mm)	Height B (mm)	Thickness C (mm)	Pleat pack	Media area (m ²)	Flow rate (m ³ /h)/ Delta P (Pa)
H14							
1902963	THE-LA140A	305	305	150	100	4,5	150 / 85
1903015	THE-LA140A	305	610	150	100	9	300 / 85
1902966	THE-LA140A	457	457	150	100	10,1	335 / 85
1902967	THE-LA140A	457	610	150	100	13,5	450 / 85
1903017	THE-LA140A	610	610	150	100	18	600 / 85
1902969	THE-LA140A	610	762	150	100	22,5	750 / 85
1902970	THE-LA140A	610	915	150	100	27	900 / 85
1902971	THE-LA140A	610	1220	150	100	36	1200 / 85
1902973	THE-LA140A	610	1830	150	100	54	1800 / 85
1902974	THE-LA140A	762	762	150	100	28,1	935 / 85
1902979	THE-LA140A	915	915	150	100	40,5	1350 / 85
1903005	THE-LA140A	915	1220	150	100	54	1800 / 85
U15							
1903021	THE-LA150A	305	305	150	100	4,5	150 / 100
1903052	THE-LA150A	305	610	150	100	9	300 / 100
1903024	THE-LA150A	457	457	150	100	10,1	335 / 100
1903025	THE-LA150A	457	610	150	100	13,5	450 / 100
1903054	THE-LA150A	610	610	150	100	18	600 / 100
1903027	THE-LA150A	610	762	150	100	22,5	750 / 100
1903028	THE-LA150A	610	915	150	100	27	900 / 100
1903029	THE-LA150A	610	1220	150	100	36	1200 / 100
1903035	THE-LA150A	610	1830	150	100	54	1800 / 100
1903036	THE-LA150A	762	762	150	100	28,1	935 / 100
1903041	THE-LA150A	915	915	150	100	40,5	1350 / 100
1903042	THE-LA150A	915	1220	150	100	54	1800 / 100



Tip  The lifetime of an air filter is not proportional to its filtration area in use; it's more than that: choose a model with 50% filtration Media area more and you'll increase its lifetime of 100% !