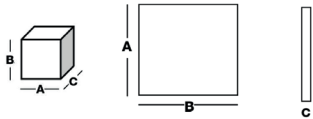
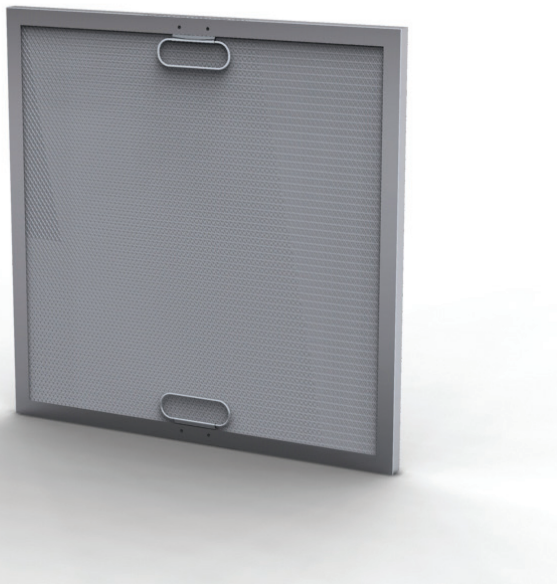


FILTER CELLS

FCM



Barcode	Efficiency EN779:2012	Width A (mm)	Height B (mm)	Depth C (mm)	Media area (m ²)	Flow rate (m ³ /h)/ Delta P (Pa)
G2 - ISO COARSE 30% ISO 16890						
1600072	G2	592	592	23	0,35	3400 / 12
1600073	G2	287	592	23	0,17	1700 / 12
1600060	G2	592	592	47	0,35	3400 / 17
1600078	G2	287	592	47	0,17	1700 / 17



Tip 💡 Tell us how many layers you need!

APPLICATIONS

- Grease or oil mist filters for kitchen extract systems
- Heat screen when close to hot batteries
- Droplets separator on air treatment units

ADVANTAGES

- Rigid cells with reinforcement holds for larger sizes
- Superposition of media layers
- Available with drain holes in corners and handles

GENERAL FEATURES

- Efficiency EN779: G2
- Media: Knitted galvanized steel, stainless steel or aluminium layers
- Frame: Galvanized steel, stainless steel or aluminium
- Recommended final pressure drop: 250 Pa
- Maximum T° in continuous service: 150°C
- Humidity: 100% RH

